



CLINICAL STUDY PROTOCOL

Study Title: A Phase 2b, Randomized, Double-Blind, Placebo-Controlled Multi-Center Study Evaluating Antiviral Effects, Pharmacokinetics, Safety, and Tolerability of GS-5806 in Hospitalized Adults with Respiratory Syncytial Virus (RSV) Infection

Sponsor: Gilead Sciences, Inc.
199 East Blaine Street
Seattle, WA 98102

IND Number: 114498
EudraCT Number: TBD
Clinical Trials.gov Identifier: TBD

Indication: Respiratory Syncytial Virus Infection

Protocol ID: GS-US-218-1227

Gilead Clinical Program Manager: Name: PPD
Telephone: PPD

Gilead Medical Monitor: Name: Jason Chien, MD, MS
Telephone: PPD
Fax: PPD
Mobile: PPD

Protocol Version/Date: Original 10 November 2013

CONFIDENTIALITY STATEMENT

The information contained in this document, particularly unpublished data, is the property or under control of Gilead Sciences, Inc., and is provided to you in confidence as an investigator, potential investigator, or consultant, for review by you, your staff, and an applicable Institutional Review Board or Independent Ethics Committee. The information is only to be used by you in connection with authorized clinical studies of the investigational drug described in the protocol. You will not disclose any of the information to others without written authorization from Gilead Sciences, Inc., except to the extent necessary to obtain informed consent from those persons to whom the drug may be administered.

TABLE OF CONTENTS

TABLE OF CONTENTS	2
PROTOCOL SYNOPSIS	5
GLOSSARY OF ABBREVIATIONS AND DEFINITION OF TERMS	15
1. INTRODUCTION	19
1.1. Background	19
1.2. GS-5806	20
1.2.1. General Information	20
1.2.2. Preclinical Pharmacology and Toxicology	21
1.2.3. Clinical Trials of GS-5806	23
1.3. Rationale for This Study	27
1.4. Dose Rationale	27
1.5. Compliance	28
2. OBJECTIVES	29
3. STUDY DESIGN	30
3.1. Endpoints	30
3.2. Study Design	31
3.3. Study Treatments	33
3.4. Duration of Treatment	34
3.5. Source Data	34
3.6. Biomarker Testing	34
3.6.1. Biomarker Samples to Address the Study Objectives	34
3.6.2. Biomarker Samples for Optional Future Research	34
4. SUBJECT POPULATION	36
4.1. Number of Subjects and Subject Selection	36
4.2. Inclusion Criteria	36
4.3. Exclusion Criteria	37
5. INVESTIGATIONAL MEDICINAL PRODUCTS	39
5.1. Randomization, Blinding, and Treatment Codes	39
5.1.1. Procedures for Breaking Treatment Codes	39
5.2. Description and Handling of GS-5806	39
5.2.1. Formulation	39
5.2.2. Packaging and Labeling	40
5.2.3. Storage and Handling	40
5.3. Dosage and Administration of GS-5806	40
5.4. Prior and Concomitant Medications	40
5.5. Accountability for GS-5806	41
5.5.1. Investigational Medicinal Product Return or Disposal	41
6. STUDY PROCEDURES	42
6.1. Subject Enrollment and Treatment Assignment	42
6.1.1. Screening Visit (Day -1)	42
6.1.2. Baseline Assessments (Day 1)	43
6.2. Randomization and Treatment Assessments	44
6.3. Days 2 and 3	45
6.4. Day 5	45
6.5. Day 7 and Day 14 (+/- 1 day)	46
6.6. Day 28 (+ 7 days)	47

6.7.	Assessments for Premature Discontinuation from Study	47
6.8.	Study Assessments	47
6.8.1.	Nasal Swabs and Virology	47
6.8.2.	Patient Reported Outcomes / Questionnaires / Other Assessments	48
6.8.3.	Vital Signs	50
6.8.4.	Oxygen Saturation	50
6.8.5.	Electrocardiogram (ECG)	50
6.8.6.	Safety Labs	50
6.8.7.	Plasma PK	50
6.8.8.	Biomarkers	51
7.	ADVERSE EVENTS AND TOXICITY MANAGEMENT	52
7.1.	Definitions of Adverse Events, Adverse Reactions, and Serious Adverse Events	52
7.1.1.	Adverse Events	52
7.1.2.	Serious Adverse Events	52
7.1.3.	Clinical Laboratory Abnormalities and Other Abnormal Assessments as Adverse Events or Serious Adverse Events	53
7.2.	Assessment of Adverse Events and Serious Adverse Events	53
7.2.1.	Assessment of Causality for Study Drugs and Procedures	53
7.2.2.	Assessment of Severity	54
7.3.	Investigator Requirements and Instructions for Reporting Adverse Events and Serious Adverse Events to Gilead	54
7.4.	Gilead Reporting Requirements	56
7.5.	Toxicity Management	57
7.6.	Special Situations Reports	57
7.6.1.	Definitions of Special Situations	57
7.6.2.	Instructions for Reporting Special Situations	58
8.	STATISTICAL CONSIDERATIONS	60
8.1.	Analysis Objectives and Endpoints	60
8.1.1.	Analysis Objectives	60
8.1.2.	Primary Endpoint	60
8.1.3.	Secondary Endpoints	60
8.1.4.	Exploratory Endpoints	61
8.2.	Analysis Conventions	62
8.2.1.	Analysis Sets	62
8.3.	Data Handling Conventions	62
8.4.	Demographic Data and Baseline Characteristics	63
8.5.	Efficacy Analysis	63
8.5.1.	Primary Analysis	63
8.5.2.	Secondary Analyses	63
8.5.3.	Exploratory Analyses	64
8.6.	Safety Analysis	65
8.6.1.	Extent of Exposure	65
8.6.2.	Adverse Events	65
8.6.3.	Laboratory Evaluations	65
8.6.4.	Other Safety Evaluations	66
8.7.	Pharmacokinetic Analysis	66
8.8.	Sample Size	66
8.9.	Interim Analysis	66
8.10.	Data Monitoring Committee	67
9.	RESPONSIBILITIES	68
9.1.	Investigator Responsibilities	68
9.1.1.	Good Clinical Practice	68

9.1.2.	Institutional Review Board (IRB)/Independent Ethics Committee (IEC) Review and Approval.....	68
9.1.3.	Informed Consent.....	68
9.1.4.	Confidentiality	69
9.1.5.	Study Files and Retention of Records	69
9.1.6.	Case Report Forms.....	70
9.1.7.	Data Quality Control and Quality Assurance	71
9.1.8.	Investigational Medicinal Product Accountability and Return	71
9.1.9.	Inspections	72
9.1.10.	Protocol Compliance	72
9.2.	Sponsor Responsibilities	72
9.2.1.	Protocol Modifications.....	72
9.2.2.	Study Report and Publications	72
9.3.	Joint Investigator/Sponsor Responsibilities	73
9.3.1.	Access to Information for Monitoring.....	73
9.3.2.	Access to Information for Auditing or Inspections	73
9.3.3.	Study Discontinuation.....	73
10.	REFERENCES	74
11.	APPENDICES	77
Appendix 1.	Investigator Signature Page.....	78
Appendix 2.	Study Procedures Table.....	79
Appendix 3.	Management of Clinical and Laboratory Adverse Events.....	81
Appendix 4.	GSI Grading Scale for Severity of Adverse Events and Laboratory Abnormalities	82
Appendix 5.	Pregnancy Precautions, Definition for Female of Childbearing Potential, and Contraceptive Requirements	105

PROTOCOL SYNOPSIS

Gilead Sciences, Inc.
199 E Blaine St
Seattle, WA 98102

Study Title: A Phase 2b, Randomized, Double-Blind, Placebo-Controlled Multi-Center Study Evaluating Antiviral Effects, Pharmacokinetics, Safety, and Tolerability of GS-5806 in Hospitalized Adults with Respiratory Syncytial Virus (RSV) Infection

IND Number: 114498

EudraCT Number: TBD

Clinical Trials.gov Identifier: TBD

Study Centers Planned: Approximately 60 centers in Australia, Canada, New Zealand, Western Europe, and the United States.

Objectives: The primary objective of this study is to evaluate the effects of GS-5806 on RSV viral load in RSV-positive adults hospitalized with acute respiratory infectious symptoms.

The secondary objectives of this study are to evaluate:

- The effect of GS-5806 on the Clinical Symptom Score
 - The effect of GS-5806 on the length of hospital stay
 - The effect of GS-5806 on the rate of unplanned healthcare encounters (clinic visits, emergency room visits, urgent care visits, and rehospitalizations) related to a respiratory illness after discharge
 - The effect of GS-5806 on change in the FLU-PRO score from baseline
 - The PK, safety, and tolerability of GS-5806
-

Study Design: Randomized, double-blind, placebo-controlled study evaluating the effect of GS-5806 on RSV viral load, pharmacokinetics (PK), safety, and tolerability in hospitalized adults with RSV infection.

Subjects will be randomized in a 1:1 ratio to receive GS-5806 or placebo.

Subjects will be stratified by the following:

- 1) No chronic airways or lung disease
- 2) COPD
- 3) Asthma
- 4) Other chronic airways or lung disease

Number of Subjects Planned: Approximately 200 RSV-positive subjects.

Target Population: Men and women ≥ 18 years of age hospitalized with an acute respiratory illness

Duration of Treatment: 1 day

Diagnosis and Main Eligibility Criteria: For a complete list of study inclusion and exclusion criteria, please refer to Sections 4.2 and 4.3

Main Inclusion Criteria:

- ≥ 18 years of age at Screening
- Willing to adhere to protocol specific requirements for contraception
- Admission to the hospital primarily for a respiratory related illness
- New onset or acute worsening of at least 1 respiratory infectious symptom from each category for ≤ 5 days prior to screening:
 - Upper respiratory tract symptoms: Nasal congestion, runny nose, sore throat, or earache
 - Lower respiratory tract symptoms: Cough, sputum production, wheezing, dyspnea, or chest tightness
- Documented to be RSV-positive at the current admission within 72 hours of Screening, or as evaluated at Screening

Main Exclusion Criteria:

Related to concomitant or previous medication use:

- Use of any investigational medicinal products in the 28 days prior to Visit 1, OR use of any investigational monoclonal antibody within 105 days or 5 half-lives of Visit 1 whichever is longer, OR use of any investigational RSV vaccine ever
- Use of chronic (> 28 days prior to Screening) systemic immunosuppressive agents (see Section 4.3)
- Use of chronic oral prednisone equivalent to > 20 mg/day. Chronic prednisone doses equivalent to \leq 20 mg/day is acceptable. Short courses (\leq 28 days prior to Screening) of oral prednisone equivalent to > 20 mg/day are acceptable if used > 14 days prior to Screening.
- Subjects taking a CYP inhibitor or inducer including but not limited to rifampin, St John's wort, carbamazepine, and phenytoin

Related to medical condition at Screening:

- Influenza positive as determined by a rapid influenza diagnostic test or PCR-based assay for influenza
- History of New York Heart Association Class 3 heart failure or greater
- New onset of arrhythmia at the current admission
- Requirement for mechanical ventilation, not including noninvasive ventilation
- Positive bacteremia or fungemia at the current admission
- Confirmed bacterial, fungal, or non-RSV viral pneumonia, as determined by the investigator
- New cerebrovascular accident or stroke documented at the current admission
- Admission for trauma or emergent or planned surgeries
- Excessive nausea/vomiting at admission, as determined by investigator, that precludes administration of an orally administered Investigational Medicinal Product (IMP)

Study Procedures/
Frequency:

For a complete overview of study procedures and visits, please refer to Section 6 and Appendix 2.

Subjects admitted to the hospital with acute respiratory infectious symptoms will undergo a 2-part consent process.

Part 1: Prospective subjects who have not had an influenza and RSV positive respiratory sample testing during this hospitalization will be consented for influenza and RSV testing of nasal samples.

Part 2: RSV-positive subjects will be approached to consent for the treatment phase of the study.

Vital Signs (VS): Vital signs will be measured at Screening, Baseline, Days 2, 3, 5, 7, and 14, and will include temperature, heart rate, respiratory rate, and blood pressure.

O₂ Saturation: O₂ saturation will be recorded at Screening, Baseline, Days 2, 3, 5, 7, and 14, while breathing room air, even if the subject is dependent on O₂ supplementation. Refer to Section 6.8.4 for procedure.

Questionnaires: All questionnaires will be administered by the study coordinator after consent and prior to all other study procedures. Four (4) questionnaires will be utilized in this study:

- Frailty questionnaire (FRAIL): Baseline
- EQ-5D: Baseline, Days 7 and 14,
- Clinical Symptom Score: Baseline, Days 2, 3, 5, 7, and 14.
- FLU-PRO: Baseline, Days 2, 3, 5, 7, and 14.

Healthcare Utilization Assessment: Healthcare utilization will be evaluated on Days 7, 14, and 28 to include the use of ICU, intermediate care facilities, or nursing homes; number of days on supplemental O₂ during the study; use of mechanical ventilation; and number of subsequent unplanned clinic visits, emergency room visits, urgent care visits, and rehospitalizations (for any respiratory illness).

Laboratory tests: When available, the most recent laboratory values from the current hospitalization will be used for eligibility assessment. Urine pregnancy tests will be performed by study staff on site at Screening (as necessary), followed by a serum pregnancy test for all females of child-bearing potential on Day 14. Blood specimens will be collected at Screening (if required), Baseline, Days 3, 5, and 14. For Baseline and Day 5, an additional blood sample will be collected for biomarker analysis.

Electrocardiogram (ECG): A pre-dose ECG will be performed at Baseline, unless an ECG is available from the current admission records. A second ECG will also be obtained, approximately 2 hours +/- 30 minutes post-dose.

PK blood draws: Blood will be drawn for PK at Baseline approximately 2 hours +/- 30 minutes after IMP administration and at any time on Days 3 and 5.

Nasal sampling: Nasal sampling will be performed at Screening, Baseline, Days 2, 3, 5, 7, and Day 14, according to specifications in the study manual.

RSV-testing: RSV-testing will be performed at Screening using the assay available at the local laboratory. All samples collected from Baseline to Day 14 will be analyzed using an RSV-specific qRT-PCR assay at a central laboratory.

Study Visits

Screening: Day -1

This is a required hospital visit. The following Screening procedures/labs are required:

- Obtain written informed consent
- Collection of 1 nasal swab sample for RSV-testing, if not already done during the current admission
- Collection of one nasal swab sample from the opposite naris for influenza-testing, unless results are available from the current admission
- Vital signs, including O₂ saturation
- Blood sample collection for local laboratory analyses, unless results exist from the current admission
- Urine pregnancy test in women unable to confirm menopause, hysterectomy and/or bilateral oophorectomy
- Review of any adverse events (AEs) occurring after signing of the consent form

Baseline / Randomization: Day 1

This is a required hospital visit. IMP must be administered in the hospital. The following assessments will be performed at Baseline:

- Obtain subject consent for study participation
- Questionnaire assessments

- Collection of medical history and demographics
- Height and weight
- Collection of 1 nasal swab sample for analysis at the central lab
- Blood sample collection
- ECG, pre- and post-dose
- Vital signs, including O₂ saturation
- IMP administration
- PK sampling 2 hours +/- 30 minutes post-dose
- Assessment of AEs and concomitant medications

Days 1 through 7 will occur 24 hours +/- 4 hours apart. There are no procedures on Days 4 and 6.

Days 2 and 3

The Day 2 and 3 visits may occur in the hospital or clinic. The following assessments will be performed:

- Questionnaire assessment
- Vital signs, including O₂ saturation
- Collection of 1 nasal swab sample for analysis at the central lab
- PK draw (Day 3 only)
- Blood sample collection (Day 3 only)
- Assessment of AEs and concomitant medications

Day 5

The Day 5 visit may occur in the hospital or clinic. The following procedures will be performed:

- Questionnaire assessment
- Vital Signs, including O₂ saturation
- Collection of 1 nasal swab sample of analysis at the central lab
- Blood sample collection
- PK draw
- Assessment of AEs and concomitant medications

Day 7 and Day 14 (+/- 1 day)

The Day 7 and Day 14 visits may occur in the hospital or clinic. The following procedures will be performed:

- Questionnaire assessment
- Healthcare Utilization assessment
- Vital Signs, including O₂ saturation
- Collection of 1 nasal swab sample of analysis at the central lab
- Blood sample collection (Day 14 only)
- Serum pregnancy test in women unable to confirm menopause, hysterectomy and/or bilateral oophorectomy (Day 14 only)
- Assessment of AEs and concomitant medications

Day 28 (+ 7 days)

This visit may occur no earlier than Day 28 and no later than Day 35. This visit may be conducted in the hospital or clinic:

- Questionnaire assessment
- Healthcare Utilization assessment
- Assessment of AEs and concomitant medications

Test Product, Dose, and Mode of Administration:

GS-5806 50 mg tablets administered orally

- Dose Day 1 GS-5806: 200 mg (four 50mg tablets)

IMP must be administered after the subject has been fasting for at least 2 hours. The subject will remain in a fasting condition for approximately 1 hour after dosing.

Reference Therapy, Dose, and Mode of Administration:

Placebo-to-Match tablets administered orally
Administration will be the same as for GS-5806.

Criteria for Evaluation:

Safety: Safety will be assessed by the reporting of AEs and serious adverse events (SAEs) throughout the study, clinical laboratory tests, VS, and ECGs at various time points during the study.

Efficacy: The primary endpoint is the AUC of log₁₀ viral load from Day 1 to Day 7 as measured by qRT-PCR.
The key secondary endpoints are:

- AUC of change in the Clinical Symptom Score from Baseline to Day 7.
- Duration of hospital stay following IMP administration

- Rate of unplanned medical encounters (clinic visits, emergency room visits, urgent care visits, and rehospitalizations) related to a respiratory illness after initial hospital discharge through Day 28
- AUC of change in the FLU-PRO score from Baseline to Day 7

PPD

Pharmacokinetics:

- GS-5806 concentration in plasma at 2 hours +/- 30 minutes following IMP administration
- GS-5806 concentration in plasma at Days 3 and 5
- The following plasma PK parameters will be calculated for GS-5806 (as appropriate): C_{last} , T_{last} , and AUC_{last} .

Evaluable subjects for PK analysis will include those who are RSV-positive by local assay and dosed with 200 mg of IMP. Evaluable subjects for efficacy analyses will include those who have an RSV \log_{10} viral load greater than the lower limit of quantification (LLOQ) of the qRT-PCR assay in the pre-dose Day 1 nasal swab sample, as determined by quantitative RT-PCR at the central lab, have a minimum of 3 quantifiable nasal swab samples (including baseline), and have been dosed with IMP.

The primary efficacy analysis of AUC of RSV \log_{10} viral load from Day 1 through Day 7 will be performed on subjects included in the efficacy evaluable analysis set. To test the null hypothesis that there is no difference between the GS-5806 and placebo treatment groups in the mean AUC of viral load, a parametric analysis of covariance (ANCOVA) model with corresponding baseline viral load as a covariate will be used, with a 2-sided 0.05 level. Adjusted means and 95% confidence intervals (CIs) will also be presented.

Statistical Methods:

The evaluable analysis set will be used for all summaries and analyses of secondary endpoints. All secondary and other endpoints will be analyzed using 2-sided tests for treatment differences. AUC of change in the Clinical Symptom Score from Baseline to Day 7 will be analyzed using an ANCOVA model with baseline as a covariate. Adjusted means and 95% CIs will be presented for this analysis. Duration of hospital stay following IMP administration will be analyzed using an analysis of variance (ANOVA) model with treatment as a fixed effect. Means and 95% CIs will be presented for this analysis. The rate of unplanned medical encounters related to a respiratory illness after initial hospital discharge through Day 28 will be analyzed using a negative binomial regression method with an offset parameter to account for follow-up time. AUC of change in the FLU-PRO

score from Baseline to Day 7 will be analyzed using an ANCOVA model with baseline as a covariate. Adjusted means and 95% CIs will be presented for this analysis.

PPD

All endpoints will be summarized using descriptive statistics (sample size, mean, standard deviation [SD], median, Q1, Q3, minimum, and maximum) for continuous data and by the number and percent of subjects for categorical data.

Safety analyses will be performed on all subjects who received IMP. Safety data will be collected and summarized from screening through Day 28. Safety data will be listed by subject and summarized by treatment (active or placebo) using the number (percent) of subjects with events/abnormalities for categorical data and using descriptive statistics for continuous data.

Evaluable subjects for PK analysis will include those who are RSV-positive by local assay and dosed with 200 mg of IMP. Concentrations of GS-5806 in plasma will be determined using a validated bioanalytical assay(s). Individual subject GS-5806 concentration-time data will be displayed using scheduled sampling times (Days 1, 2, and 3). Descriptive statistics (eg, n, mean, standard deviation, %CV, median, and range) will be calculated for each sampling time. Plasma concentrations of GS-5806 over time will be plotted in semi-logarithmic and linear formats as mean \pm SD. Plasma concentration-time data for each subject will be analyzed using standard non-compartmental methods. Pharmacokinetic/Pharmacodynamic (PK/PD) relationship may be explored as appropriate.

Sample size calculations are based on results observed in subjects who received placebo in the GS-US-218-0103 study. The sample size calculation assumes the mean AUC of \log_{10} viral load from Day 1 to Day 7 in the placebo group will be $433 \log_{10}$ PFUe \times hour/ml with a corresponding standard deviation (SD) of 300 and that 85% of the subjects will be evaluable. Based on these assumptions, with 85 subjects per group there is approximately 80% power to detect a 30% reduction in mean AUC of \log_{10} viral load (a treatment difference of $130 \log$ PFUe \times hour/ml) using a 2-sided 0.05-level test. Given an evaluable rate of 85%, a total of 200 subjects will need to be randomized into the study.

An interim futility analysis of the primary endpoint, AUC of \log_{10} viral load from Day 1 through Day 7, may be conducted after approximately 50% of the enrollment has been achieved. The results from this interim analysis will be reviewed by the data monitoring committee (DMC), who may recommend early

termination for futility if the conditional power is $< 10\%$. Further details of the interim analysis and assessment of futility will be described in the statistical analysis plan (SAP), including the computation methods of conditional power such as those proposed by Lachin, 2005 {26904}.

This study will be conducted in accordance with the guidelines of Good Clinical Practice (GCP) including archiving of essential documents.

GLOSSARY OF ABBREVIATIONS AND DEFINITION OF TERMS

° C	degrees Celsius
° F	degrees Fahrenheit
ADME	absorption, distribution, metabolism, and elimination
AE	adverse event
AhR	aryl hydrocarbon
AIDS	auto-immune deficiency syndrome
ALT	alanine aminotransferase
ANC	absolute neutrophil count
ANCOVA	analysis of covariance
ANOVA	analysis of variance
AST	aspartate aminotransferase
AUC	area under the plasma/serum/peripheral blood mononuclear cell concentration versus time curve
BID	twice a day
BLQ	below the limit of quantification
BMI	body mass index
BUN	blood urea nitrogen
CBC	complete blood count
CC ₅₀	50% cytotoxic concentration
CCM	cell culture medium
CI	confidence interval
CL _{cr}	creatinine clearance
C _{max}	the maximum observed serum/plasma/peripheral blood mononuclear (PBMC) concentration of drug
CONMED	concomitant medication
COPD	chronic obstructive pulmonary disease
CRF	case report form(s)
CRO	contract (or clinical) research organization
CTA	clinical trial application
CYP _{xx}	cytochrome P450 enzyme xx
DMC	Data Monitoring Committee
DSPH	Drug Safety and Public Health
EC	ethics committee
EC ₅₀	concentration of drug to reach 50% inhibition of virus replication
ECG	electrocardiogram
eCRF	electronic case report form(s)
ELF	epithelial lining fluid
EMR	electronic medical records
EOS	end of study
EQ-5D	European Quality of Life – 5 Dimension questionnaire
ET	early termination
EU	European Union

GLOSSARY OF ABBREVIATIONS AND DEFINITION OF TERMS (CONTINUED)

EudraCT	European clinical trials database
FAS	full analysis set
FIH	First in human
FDA	(United States) Food and Drug Administration
GCP	Good Clinical Practice (Guidelines)
GD	gestational day
GI	gastrointestinal
GLP	good laboratory practice
GSI	Gilead Sciences, Inc.
h	hour
HAE	human airway epithelial (cells)
Hb	hemoglobin
HCV	hepatitis C virus
Hct	hematocrit
HDPE	high-density polyethylene
HED	human equivalent dose
hERG	human ether-à-go-go-related gene
HIV	human immunodeficiency virus
HLGT	high level group term
HIV-1	human immunodeficiency virus type 1
HLT	high level term
HPMC	hydroxypropyl methyl cellulose
HRV-10	human rhinovirus serotype 10
IB	investigator's brochure
IC ₅₀	concentration of drug to reach 50% inhibition
ICF	Informed Consent Form
ICH	International Conference on Harmonisation
ICU	Intensive Care Unit
ID	identification
IEC	independent ethics committee
IMP	Investigational Medicinal Product
IND	Investigational New Drug (Application)
IP	intraperitoneal
IQ	Inhibitory Quotient ratio, calculated as C _{min} plasma concentration/paEC ₅₀ for GS-5806
IRB	institutional review board
ITT	intent-to-treat (analysis or subset)
IV	intravenous
IVRS	interactive voice response system
kg	kilogram
LLN	lower limit of the normal range
LLT	lower level term

GLOSSARY OF ABBREVIATIONS AND DEFINITION OF TERMS (CONTINUED)

m	meter
MedDRA	Medical Dictionary for Regulatory Activities
MF	male and female combined data
mg	milligram
min	minute
mL	milliliter
mmHg	millimeters mercury
MMRM	mixed-effect model repeated measures
NA	not analyzed
NADPH	nicotinamide adenine dinucleotide phosphate
ND	not detectable
NDA	New Drug Application
nM	nanomolar
NOAEL	no-observed-adverse-effect level
NOEL	no-observed-effect level
O ₂	oxygen
PEG	polyethylene glycol
PK	pharmacokinetic
PND	post-natal day
PO	oral administration (per os, by mouth)
PR	pulse rate
PT	preferred term
PXR	pregnane x receptor
Q1	first quartile
Q3	second quartile
QA	quality assurance
QRS	part of electrocardiographic wave representing ventricular depolarization
qRT-PCR	qualitative reverse transcriptase polymerase chain reaction
QT	interval between the start of the Q wave and the end of the T wave on ECG
QTc	corrected QT
QTcF	QT interval corrected for heart rate using the Fridericia formula
RNA	ribonucleic acid
RO	reverse osmosis
RR	interval between the peak of R waves of 2 consecutive ECG complexes
RSV	Respiratory Syncytial Virus
SAD	single ascending dose
SAE	serious adverse event
SAP	Statistical Analysis Plan
SD	standard deviation
SEM	standard error of the mean
SI	selectivity index
SOC	system organ class

GLOSSARY OF ABBREVIATIONS AND DEFINITION OF TERMS (CONTINUED)

SOP	standard operating procedure
SUSAR	Suspected Unexpected Serious Adverse Reaction
TBD	to be determined
t_{\max}	the time (observed time point) of C_{\max}
$t_{1/2}$	an estimate of the terminal elimination half-life of the drug in serum/plasma/PBMC, calculated by dividing the natural log of 2 by the terminal elimination rate constant (λ_z)
ULN	upper limit of the normal range
US	United States
VS	vital signs
V_{ss}	apparent volume of distribution at steady state
v/v	volume/volume
WBC	white blood cell count
w/v	weight/volume

1. INTRODUCTION

1.1. Background

Respiratory syncytial virus (RSV), a member of the family *Paramyxoviridae*, is an enveloped virus with a negative single-strand ribonucleic acid (RNA) genome. Respiratory syncytial virus encodes for 11 proteins, including 3 surface glycoproteins (F, G, and SH) and several proteins that comprise the viral RNA polymerase complex (N, P, L, and M2-1). Two major antigenic subgroups of RSV are known, RSV A and RSV B, that differ primarily in the genetic sequence of the G glycoprotein while maintaining a higher degree of homology across other parts of the genome. Both subgroups show comparable pathogenicity and can co-circulate in the same community during a seasonal epidemic, but their individual prevalence usually varies from season to season.

RSV infection is the most common cause of admissions to pediatric general inpatient units in the United States (US) and Western Europe {20222}. Unfortunately, the rate of hospitalization among RSV infected children has remained unchanged in the US over the last decade. From 1997 to 2006, RSV-coded hospitalizations accounted for 24% of an estimated 5.5 million lower respiratory tract infection hospitalizations among children < 5 years of age. During this period, it was estimated that approximately 172,000 hospitalizations each year were caused by RSV infection among children < 5 years of age; approximately 73% of these hospitalizations occur among children < 12 months of age {20227}.

RSV infection is also a cause of respiratory disease in the adult population. Among adults, the 2 populations that are at higher risk for RSV infection are the immunocompromised and the elderly. Immunocompromised patients are most commonly represented by those who have received either a bone marrow transplant (BMT) or lung transplant. {20233} RSV is a significant cause of morbidity and mortality in the BMT population, with a reported incidence that ranges from 2% to 17% {26908}. Infection can proceed from the upper to the lower respiratory tract in up to 84% of RSV-infected patients, and the associated mortality rate may be as high as 100% {26908}. In lung transplant populations, it is estimated that approximately ~10% of these patients are diagnosed with an RSV infection each year {20903}. In this population, RSV infection has been associated with development of host versus graft disease, also known as bronchiolitis obliterans syndrome (BOS), which is the most common cause of death after lung transplantation {20903}.

Recently, RSV infection is becoming more recognized in the elderly population. {20217}, {20216} Falsey et al estimates that RSV is responsible for approximately 180,000 admissions each year among the elderly accounting for 10.6%, 11.4%, 5.4% and 7.2% of hospitalizations for pneumonia, chronic obstructive pulmonary disease (COPD), congestive heart failure (CHF), and asthma respectively. {20216} Subsequent epidemiologic data from multiple studies suggest that among all elderly, the prevalence of RSV is likely 7-10%. {26905}, {26903}, {26901}, {26906}, {26907}, {26909}, {26908} The mortality rate is estimated to be 10%, but increases to 40% to 50% in patients requiring mechanical ventilation {26902}.

RSV replicates effectively in the upper and lower respiratory tract and can cause respiratory symptoms directly, by damaging the integrity of the small airway epithelium, and indirectly, by inducing strong immune responses in lungs that lead to airway obstruction {20224}. Although the relationship between nasal viral load and clinical disease severity has not been fully explained, there is evidence that higher viral loads are associated with more severe clinical disease in both children and adults. For instance, children up to 36 months of age have nearly 2000-fold higher viral loads in the nasal secretions than adults with COPD hospitalized for RSV-related exacerbations {20210}. Hospitalized children with lower respiratory tract RSV infection have higher nasal viral loads than age-matched controls with less severe disease {20215}, {20213}, {20212}. Among adults, inpatients tend to have higher viral loads than outpatients, and among inpatients, a higher viral load is associated with the development of respiratory failure requiring mechanical ventilation and observed among intensive care unit patients {20214}, {26902}. Higher viral loads may contribute to the severity of disease by causing direct damage to the airway epithelium. A post-mortem study of infants who died of RSV infection revealed that while there was evidence of inflammatory infiltrates centered on bronchial and pulmonary arterioles (ie, T-cells, monocytes, neutrophils), the most prominent feature in all of the cases was airway obstruction attributed to epithelial and inflammatory cell debris, mixed with fibrin, mucus, and edema, suggesting that direct viral cytopathic effect in respiratory epithelium, in conjunction with the host inflammatory response, may contribute to the pathogenesis and severity of RSV infections {20221}.

Currently there are no effective approved prophylactic or therapeutic treatment options for the adult population. Once hospitalized, treatment for RSV infection in adults is supportive, with intravenous hydration, supplemental oxygen, and mechanical ventilation. An RSV vaccine is not available. The only approved antiviral treatment for RSV in pediatric population is Virazole[®] (ribavirin), an inhaled agent that is not used in general pediatric practice because of concerns regarding its efficacy and tolerability, as well as the complexity of the specialized aerosol delivery system that is required {19902}. Synagis[®] (palivizumab), a monoclonal antibody against RSV approved for prophylaxis against RSV infection among high risk infants, has been shown to reduce the risk of hospitalization and “medically attended lower respiratory tract infections” {20061}. However, this injectable treatment has only been shown to be cost effective for the prevention of RSV infection in the premature infant population {20232}.

1.2. GS-5806

1.2.1. General Information

GS-5806 is an orally administered RSV fusion inhibitor with potent and selective anti-RSV activity in vitro. When tested in vitro against 75 diverse clinical isolates of RSV type A and B, the EC₅₀ values (concentration of drug to reach 50% inhibition of virus replication) ranged from 0.15 to 1.09 nM, with a mean EC₅₀ value of 0.43 ± 0.22 nM. In vivo efficacy data from cotton rats infected with human RSV demonstrated that administration of GS-5806 at 0.3 to 30 mg/kg resulted in a dose-dependent reduction in viral load in both the upper respiratory tract and lungs. The steady-state pharmacokinetic (PK) volume of distribution (V_{ss}) in all nonclinical species tested was 2- to 10-fold higher than the volume of total body water and

the oral bioavailability was moderate to high. The exposure to GS-5806 in the lung and lung epithelial lining fluid (ELF) was also assessed in Sprague-Dawley rats and yielded lung tissue/plasma and ELF/plasma ratios of approximately 30 and 9, respectively. Concentrations in lung tissue and ELF declined approximately in parallel to those in plasma indicating rapid equilibration between the lung and plasma compartments.

Four week toxicology studies in 2 species (rat and dog) were conducted. The no-observed-adverse-effect-level (NOAEL) of 70 mg/kg/day in the 4-week rat study and 20 mg/kg/day in the 4-week dog study provided a 1x safety margin based on the exposure levels determined in the Phase 1 study (GS-US-218-0101) at 300 mg GS-5806 (AUC_{inf} 110,000 ng.hr/mL)

For further information on GS-5806, refer to the Investigator's Brochure (IB) for GS-5806.

1.2.2. Preclinical Pharmacology and Toxicology

GS-5806 was evaluated for the potential to bind physiologically relevant human receptors and ion channels using a radio ligand binding assay. The results showed that, at concentrations up to 10 μ M, GS-5806 did not bind to any of the 68 mammalian ion channels and receptors tested.

GS-5806 was studied in a battery of safety pharmacology studies. In a test assessing neurological function, the no-observed-effect-level (NOEL) in rats was 375 mg/kg, the highest dose tested, and in a study of respiratory function, the NOEL in rats was 375 mg/kg, the highest dose tested.

The IC_{50} for the inhibitory effect of GS-5806 on hERG potassium current was 7.8 μ M (Hill coefficient=1.2). Potential cardiovascular effects of GS-5806 were evaluated in telemetry-instrumented male Beagle dogs at dose levels of 10, 20, and 75 mg/kg. The principal hemodynamic findings were lower heart rate values (-8% at 10 mg/kg, -12% at 20 mg/kg, and -18% at 75 mg/kg) and higher arterial pulse pressure (up to 15%) and systolic pressure values (up to 11%) in dogs administered 20 or 75 mg/kg. All hemodynamic effects dissipated by 22 hours post-dose. All electrocardiograms (ECGs) were qualitatively within normal limits, and no GS-5806-related arrhythmias or abnormal waveforms were detected. GS-5806-related higher PR and QTc interval values (+6% and +3%, respectively) in dogs receiving 75 mg/kg were expected physiological responses secondary to concomitant GS-5806-related lower heart rate values. Due to the short duration, reversibility, and dose dependent pattern of small magnitude, these changes were not considered physiologically important in the context of this study.

In a Good Laboratory Practice (GLP)-compliant study, GS-5806 was administered by oral gavage for 4 weeks to rats once daily at doses of 10, 30, 70, or 100 mg/kg/day. One toxicokinetic group male administered 100 mg/kg/day was found dead on Day 14 of the dosing phase and 1 toxicity group female administered 100 mg/kg/day was found dead on Day 26 of the dosing phase. Although the cause of death for these 2 animals was undetermined, an association with GS-5806 cannot be excluded. GS-5806 administration was

associated with minor decreases in body weight gain and food consumption at doses of ≥ 70 mg/kg/day. Minor, nonadverse, reversible GS-5806-related effects on clinical pathology parameters were generally limited to animals administered ≥ 70 mg/kg/day and did not indicate specific target organ toxicity. No GS-5806 related clinical pathology effects were observed following the 4-week recovery period. At the terminal sacrifice, a GS-5806-related microscopic finding of dose dependent, minimal to moderate infiltration of vacuolated macrophages in the lungs of males administered 100 mg/kg/day and females administered ≥ 30 mg/kg/day was observed. At the recovery sacrifice, this finding was seen in three control group animals, but was not observed in GS-5806 treated animals. Because the lung finding was generally present at minimal to slight severity in GS-5806-treated rats at terminal sacrifice as well as in control animals at the recovery necropsy with no evidence of inflammation or fibrosis, it was considered nonadverse. Based on the results of this study, the NOAEL for GS-5806 is 70 mg/kg/day, which corresponded to mean AUC_{0-t} and C_{max} values on Day 23 of the dosing phase of 96,316 ng.h/mL and 6028 ng/mL, respectively (males and females combined).

GS-5806 was administered by oral gavage for 4 weeks to dogs in a GLP-compliant study once daily at doses of 2, 10, or 20 mg/kg/day. GS-5806-related effects were limited to dose dependent increased incidence of emesis, decreased body weight gain, and decreased food consumption. On Day 28, mean heart rate decreases (-20.6%) and mean QT interval increases (+15.3%) for females administered 20 mg/kg/day were observed when compared to the control group. The significant changes in the QT interval were considered unimportant because mean QTc values were not different from the control group at the same time point. No toxicologically important changes were observed in clinical pathology parameters in animals at any dose level. At terminal sacrifice, an increased incidence of minimally increased germinal center tingible-body macrophages was noted in lymph nodes in males administered ≥ 10 mg/kg/day and in females administered 20 mg/kg/day. This finding was considered an exacerbation of a common background finding, and no GS-5806-related microscopic observations were noted at the recovery sacrifice. Based on the results of this study, the NOAEL for GS-5806 administered once daily by oral gavage for 4 weeks to dogs is 20 mg/kg/day, which corresponded to mean AUC_{0-t} and C_{max} values on Day 27 of the dosing phase of 129,831 ng.h/mL and 8081 ng/mL, respectively (males and females combined).

GS-5806 was negative in the rat micronucleus study at oral doses up to 2000 mg/kg ($AUC_{0-t} = 342,413$ ng.h/mL) and did not cause mutations in the Ames assay or induce chromosomal damage in vitro with or without S9 metabolic activation. Thus, the potential for genetic toxicity is considered low.

In an oral gavage dose range-finding developmental toxicity study in rats, time-mated females were administered GS-5806 at dose levels of 30, 70, or 100 mg/kg/day from gestational day (GD) 6 through GD 17 (12-day period), with scheduled necropsy occurring on GD 21. GS-5806 treatment resulted in significant reductions in maternal body weight, body weight gain, and food consumption when compared to the control group at doses ≥ 70 mg/kg/day. GS-5806 treatment at 30 mg/kg/day caused mild reductions in body weight gain and food consumption without substantial decreases in mean body weight. Therefore,

the NOAEL for maternal toxicity was 30 mg/kg/day. There were no GS-5806-related effects on embryo-fetal viability and growth and no fetal anomalies. The NOEL for developmental toxicity in rats was 100 mg/kg/day.

In an oral gavage dose range-finding developmental toxicity study in rabbits, time-mated females were administered GS-5806 at dose levels of 3, 10, 30, or 50 mg/kg/day from GD 7 through GD 19 (13-day period), with scheduled necropsy occurring on GD 29. When compared to controls, GS-5806 treatment resulted in lower maternal body weight due to significant reductions in body weight gain and food consumption at doses \geq 30 mg/kg/day. The early termination (moribund sacrifice) of 1 female in the 50 mg/kg/day group on GD 20 was attributed to GS-5806 administration, given that this animal exhibited significant reductions in body weight and food consumption. The NOEL for maternal toxicity was 10 mg/kg/day. There were no GS-5806-related effects on embryo-fetal viability and growth and no GS-5806 treatment-related fetal anomalies. The NOEL for developmental toxicity in rabbits was 50 mg/kg/day.

1.2.3. Clinical Trials of GS-5806

1.2.3.1. GS-US-218-0101

This Phase 1, placebo-controlled, single- and multiple-dose ranging, first-in-human (FIH) study was conducted to evaluate safety, tolerability, and PK following oral administration of GS-5806 to up to 70 unique subjects. The study included 3 stages (Parts A, B, and C) with 8 total staggered cohorts (7 pre-specified, 1 adaptive). Within each cohort of Parts A and B, 8 unique subjects were randomized to receive blinded IMP, either GS-5806 (n = 6) or placebo (n = 2). Within each cohort of Part C, 10 unique subjects were randomized to receive blinded IMP, either GS-5806 (n = 8) or placebo (n = 2). Details of the IMP regimens for each cohort were as follows:

Part A (Single and Multiple Dosing; Pre-specified Cohorts)

- Cohort 1 – 25 mg GS-5806 or placebo (Day 1) followed by 25 mg GS-5806 or placebo BID (Days 15-21; 6 GS-5806 subjects, 2 placebo subjects [Day 1 fasted, Day 15 fed, Days 16-21 fasted])
- Cohort 2 – 75 mg GS-5806 or placebo (Day 1) followed by 75 mg GS-5806 or placebo once daily (Days 15-21; 6 GS-5806 subjects, 2 placebo subjects [Day 1 fasted, Day 15 fed, Days 16-21 fasted])
- Cohort 3 – 150 mg GS-5806 or placebo (Day 1) followed by 25 mg GS-5806 or placebo once daily (Days 15-21; 6 GS-5806 subjects, 2 placebo subjects [Day 1 fasted, Day 15 fed, Days 16-21 fasted])

Part B (Single and Multiple Dosing; Adaptive and Pre-specified Cohorts)

- Cohort 4 – 300 mg GS-5806 or placebo (Day 1) followed by 10 mg GS-5806 or placebo once daily (Days 15-21; 6 GS-5806 subjects, 2 placebo subjects [Day 1 fasted, Day 15 fed, Days 16-21 fasted])
- Cohort 5 – 50 mg GS-5806 or placebo (Day 1) followed by 25 mg GS-5806 or placebo once daily (Days 2-7; 6 GS-5806 subjects, 2 placebo subjects [Days 1-7 fasted])

Part C (Multiple Dosing; Pre-specified Cohorts)

- Cohort 6a – 50 mg GS-5806 or placebo (Day 1) followed by 25 mg GS-5806 or placebo once daily (Days 2-7; 8 GS 5806 subjects, 2 placebo subjects [Days 1-7 fed])
- Cohort 6b – 75 mg GS-5806 or placebo once daily (Days 1-7 [fasted]; 8 GS-5806 subjects, 2 placebo subjects)
- Cohort 6c – 75 mg GS-5806 or placebo once daily (Days 1-7 [fed]; 8 GS-5806 subjects, 2 placebo subjects)

No deaths or serious adverse events (SAEs) were reported, and there were no dose-limiting toxicities. In the GS-5806-treated subjects, there were no discontinuations due to AEs. Among the 23 subjects who received single doses of GS-5806, 5 subjects (21.7%) experienced a total of 11 AEs, with the most common AEs being presyncope and dermatitis (reported by 2 subjects each). Both incidents of presyncope, and 1 of the 2 events of dermatitis, were judged by the investigator to be related to study procedures; 1 event of dermatitis was inflammation of the skin of the right antecubital and 1 event was nonspecific dermatitis on the chest. Among the 52 subjects receiving multiple doses of GS-5806, 20 subjects (38.4%) experienced a total of 45 AEs, with diarrhea and nausea reported by 4 subjects and headache and contact dermatitis reported by 3 subjects. All other AEs experienced by subjects receiving multiple doses of GS-5806 were reported by ≤ 2 subjects each.

Time-matched 12-lead ECGs were obtained at baseline and Days 1, 15, and 21. Analysis of these ECGs demonstrated no clinically significant increase in the PR, QRS, QT, and QTcF intervals, and no clinically significant arrhythmias associated with administration of GS-5806.

Graphs of plasma concentration-time profiles after administration of a single dose of GS-5806 (25, 75, 150, or 300 mg) to healthy adult subjects under fasted conditions in Cohorts 1 to 4 demonstrated overall, that the terminal phases for all 4 doses were parallel. The plasma concentrations increased in a dose-proportional manner following single oral administrations at doses ranging from 25 to 300 mg under fasted conditions.

1.2.3.2. Study GS-US-218-0109

This Phase 1 mass-balance study was conducted to evaluate the PK, metabolism, and excretion of GS-5806. The primary objective of this study was to determine the mass balance of GS-5806 following administration of a single, oral dose of radiolabeled [¹⁴C]-GS-5806. The secondary objectives of this study were to evaluate the PK of GS-5806 and metabolites, where possible and to determine the metabolite profile of GS-5806 in humans following administration of a single, oral dose of radiolabeled [¹⁴C]-GS-5806.

Eight subjects were enrolled and assessed for a period of a minimum of 10 days and a maximum of 21 days with a 7-day follow-up period. Following a single, target 50-mg (approximately 100- μ Ci) oral dose of [¹⁴C]-GS-5806, maximum mean concentrations of drug-derived radioactivity in blood and plasma were observed at 2 hours postdose for both matrices. Levels of radioactivity in blood and plasma fell below the limit of quantitation for the majority of subjects (n=6) by 120 to 168 hours postdose. Mean blood to plasma concentration ratios ranged from 0.450 to 0.591 through 120 hours postdose, indicating low association of radioactivity with blood cells.

Profiling of plasma samples indicated that the circulating radioactivity consisted mainly of GS-5806 (88%) and low levels of minor metabolites oxy-GS-5806-glucuronide (M47; 3%), 5-chloro-2-amino (*N*-methanesulfonyl) benzamide (M58; 7%), and GS-557855 (M30B; 1%).

The major route of elimination of radioactivity in humans was via feces (~70%), with a major component excreted as unchanged parent GS-5806 (18.5%; co-eluted with dioxy-GS-5806-2 (M63)), along with other minor metabolites (dioxy-GS-5806-3 (M64; 5.42%) and dioxy-GS-557855-2 (M70; 3.51%).

Renal elimination was a minor route in humans (~15% of the dose; unchanged parent GS-5806 ~ 10.0% of the dose; M47 ~3.59% of the dose).

In summary, [¹⁴C]-GS-5806 was extensively metabolized by humans after oral administration. Metabolites were formed through oxidation, deamination, *N*-dealkylation, *N*-acetylation, hydration, and glucuronidation pathways. These results indicate that GS-5806 was metabolized via multiple metabolism pathways, and eliminated as a combination of metabolites and unchanged parent drug in humans.

1.2.3.3. Study GS-US-218-0103

This Phase 2a, randomized, double-blind, placebo-controlled study was conducted to evaluate the safety, tolerability, and efficacy of GS-5806 in healthy adult volunteers infected with an RSV challenge virus (RSV-A Memphis 37b strain). The study included 7 quarantines, each comprising approximately 20 subjects. Each subject was admitted to the Quarantine Unit and inoculated with RSV on Study Day 0. Subjects were randomized and treated with GS-5806 or placebo when infection was documented in the nasal wash, or by the fifth day after inoculation, whichever occurred first.

For Quarantines 1 through 4 (pre-specified quarantines), subjects were randomized 1:1 to receive GS-5806 or placebo, administered as a 50 mg single dose on Dose Day 1, followed by 25 mg once daily on Dose Days 2 through 5.

For Quarantines 5 through 7 (adaptive quarantines), subjects were randomized 4:1 to receive GS-5806 or placebo. Subjects in Quarantine 5 were administered a 50 mg single dose on Dose Day 1, followed by 25 mg once daily on Dose Days 2 and 3. Subjects in Quarantine 6 were administered a 100 mg single dose. Subjects in Quarantine 7 were administered a 10 mg single dose on Dose Day 1, followed by 5 mg once daily on Dose Days 2 through 5.

A total of 140 subjects were randomized into this study. All subjects completed study drug and 1 placebo subject discontinued the study due to Investigator's discretion. Baseline demographics and characteristics were similar between treatment groups across all dose cohorts. Seventy-eight (78) subjects received the pre-specified dose in quarantines 1-4 (GS-5806 n=39, Placebo n=39). Of these, 54 subjects (69%) were documented to be RSV positive prior to randomization and were included in the primary and secondary analyses (GS-5806 n=27, Placebo n=27). A total of 87 subjects received GS-5806 across all quarantines.

Treatment with GS-5806 resulted in the following:

Primary Endpoint:

- Treatment with GS-5806 resulted in lower mean AUC viral load from initial dose through end of quarantine. The mean AUC of viral load as measured by the qRT-PCR assay from first viral load measurement post initial dose of study drug through Day 12 was significantly lower in GS-5806 subjects compared to Placebo subjects ($\Delta = 506.9 \log_{10} \text{PFUe} \cdot \text{hour/ml}$, $p < 0.001$).

Secondary Endpoints:

- Treatment with GS-5806 resulted in lower mean AUC viral load during the entire quarantine period. The mean AUC of viral load post challenge through Study Day 12 as measured by the qRT-PCR assay was significantly lower in GS-5806 subjects compared to Placebo subjects ($\Delta = 531.0 \log_{10} \text{PFUe} \cdot \text{hour/ml}$, $p < 0.001$).
- Treatment with GS-5806 resulted in lower mean total mucus weight during dosing. The mean total weight of mucus produced post-initial dose of study drug through the dose was significantly lower in the GS-5806 subjects compared to Placebo subjects ($\Delta = 8.2 \text{ g}$, $p = 0.028$).
- Treatment with GS-5806 resulted in a lower mean AUC of change from baseline in total symptom score during the entire quarantine period. The mean AUC of change from baseline in total symptom score post initial dose of study drug through Study Day 12 was significantly lower in the GS-5806 subjects compared to Placebo subjects ($\Delta = 225.1 \text{ score} \cdot \text{hour}$, $p = 0.005$). The total symptoms score AUC was also significantly lower for GS-5806 treated subjects.

In each of the adaptive quarantines statistically significant results were also achieved in the primary endpoint and each of the secondary endpoints described above with the exception of a reduction in mean total mucus weight in Quarantine 7. In addition, an exposure response effect was noted.

No safety signals were observed across all dose cohorts. In the GS-5806 pre-specified treatment group, a similar percent of subjects (64%) reported at least 1 AE compared to Placebo (56%) with no reported SAEs. The percent of subjects who reported at least 1 drug-related AE was also similar in this GS-5806 treatment group (20.5%) compared to the Placebo group (25.6%). No marked laboratory abnormalities and no clinically relevant ECG values were observed in the GS-5806 treatment group. A $\geq 15\%$ change in creatinine clearance was observed in 12.8% of GS-5806 subjects and 20.5% of placebo subjects.

1.3. Rationale for This Study

There is a significant unmet medical need for a safe, convenient, and effective treatment for RSV infection. The only approved antiviral therapy for RSV, ribavirin, is approved for use in pediatric populations, but is rarely used in clinical practice due to its limited efficacy and concerning safety profile. There is no approved antiviral therapy for RSV infection among adults, where the current standard of care is supportive.

This study follows a Phase 1 FIH study (GS-US-218-0101) and a Phase 2a RSV challenge study (GS-US-218-0103), which evaluated the safety, tolerability, and PK of single and multiple doses of GS-5806 in 140 healthy adult volunteers. In Study GS-US-218-0103, a single dose of 100 mg was shown to be efficacious in reducing RSV viral load and clinical symptoms in healthy adult subjects experimentally infected with RSV.

Given these results from healthy adult volunteers studied in a controlled setting, the current study is designed to evaluate the safety, tolerability, PK, and antiviral effect of GS-5806 in adults in a natural infection setting. Efficacy data generated from this study, taken together with currently available safety and efficacy data will be used to support further clinical development of GS-5806 in pediatric and adult patients infected with RSV.

1.4. Dose Rationale

The dose and dosing schedule selected for this study is a single dose of 200 mg GS-5806 administered orally in the fasted state at Visit 2. This regimen was selected based upon 3 main factors: the observed PK profile of GS-5806 from Studies GS-US-218-0101 and GS-US-218-0103, low/modest food-effect noted in GS-US-218-0101, and the antiviral effect observed with different doses/regimens in GS-US-218-0103.

In GS-US-218-0103, a 5-day treatment regimen of GS-5806 (50 mg single dose on Dose Day 1, followed by 25 mg once daily on Dose Days 2 through 5) resulted in significant viral load reduction. The mean AUC of viral load as measured by the qRT-PCR assay from first viral load measurement post initial dose of study drug through end of quarantine (Day 12) was significantly lower in GS-5806 subjects compared to Placebo subjects ($\Delta = 506.9 \log_{10}$ PFUe*hour/ml, $p < 0.001$). This 5-day regimen was able to achieve GS-5806 concentrations ~ 4 -5 fold of $paEC_{95}$ at 120 hours following first dose for the virus used in the challenge study, the M37 strain of RSV.

In selecting the dose for the current study, we took into consideration that GS-5806 has a half-life of approximately 30 hours and the fact that the $paEC_{95}$ for the wild-type RSV strains is much lower than for the M37 strain; in vitro virological studies of 73 clinical isolates found that the $paEC_{95}$ for the wild-type RSV strains is approximately 25 ng/mL. Based on the PK properties of GS-5806, a single dose of 200 mg will achieve a GS-5806 concentration of > 3- to 5-fold $paEC_{95}$ for wild-type RSV strains through Day 5 post dose, which translates to approximately 8-9 days after symptom onset, assuming most patients present to the hospital 3-4 days after onset of symptoms. We expect this dose to demonstrate significant anti-viral effect.

1.5. Compliance

This study will be conducted in compliance with this protocol, Good Clinical Practice (GCP), and all applicable regulatory requirements.

2. OBJECTIVES

The primary objective of this study is to evaluate the effects of GS-5806 on RSV viral load in RSV-positive adults hospitalized with acute respiratory infectious symptoms.

The secondary objectives of this study are to evaluate:

- The effect of GS-5806 on the Clinical Symptom Score
- The effect of GS-5806 on the length of hospital stay
- The effect of GS-5806 on the rate of unplanned healthcare encounters (clinic visits, emergency room visits, urgent care visits, and rehospitalizations) related to a respiratory illness after discharge.
- The effect of GS-5806 on change in the FLU-PRO score from baseline
- The PK, safety, and tolerability of GS-5806

3. STUDY DESIGN

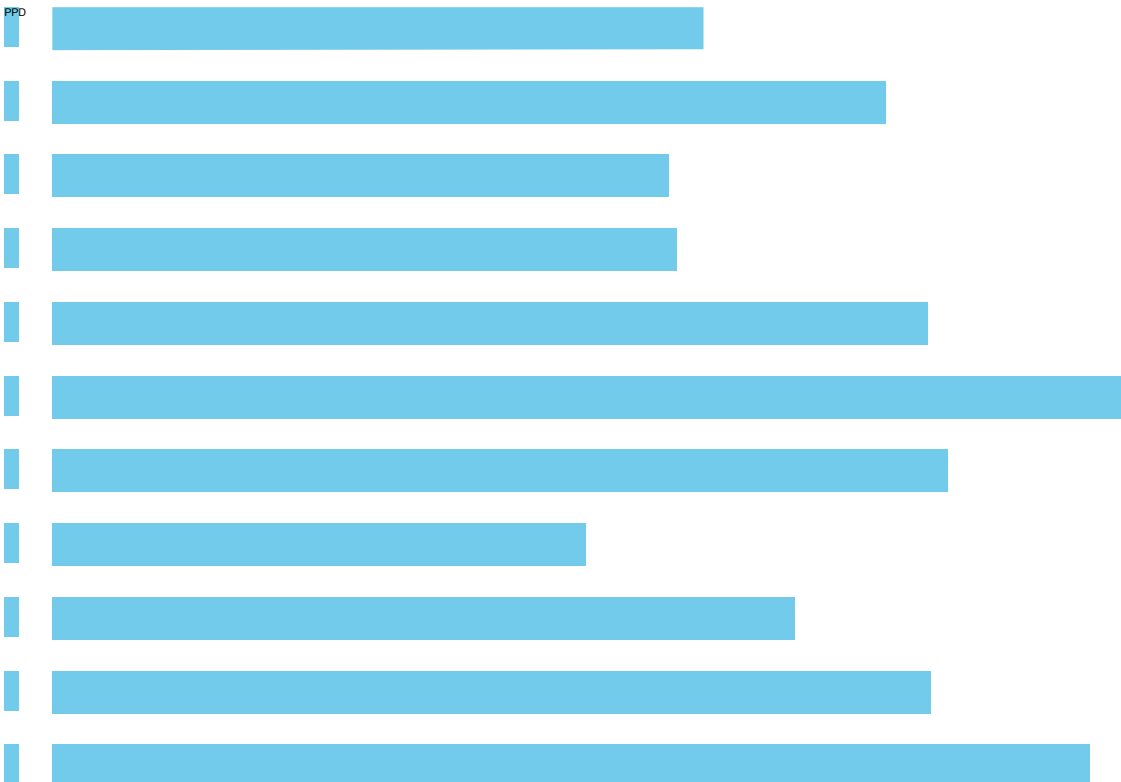
3.1. Endpoints

The primary endpoint is the area under the curve (AUC) of \log_{10} viral load from Day 1 to Day 7.

The key secondary endpoints are:

- AUC of change in the Clinical Symptom Score (calculated by subtracting new value from each timepoint from baseline value) from Baseline to Day 7
- Duration of hospital stay following IMP administration
- Rate of unplanned medical encounters (clinic visits, emergency room visits, urgent care visits, and rehospitalizations) related to a respiratory illness after initial hospital discharge through Day 28
- AUC of change in the FLU-PRO score (calculated by subtracting new value from each timepoint from baseline value) from Baseline to Day 7

Exploratory endpoints include:



PPD [REDACTED]

[REDACTED]

[REDACTED]

[REDACTED]

[REDACTED]

[REDACTED]

[REDACTED]

[REDACTED]

[REDACTED]

[REDACTED]

[REDACTED]

[REDACTED]

[REDACTED]

3.2. Study Design

This is a randomized, double-blind, placebo-controlled multi-center study to be conducted at approximately 60 centers in Australia, Canada, New Zealand, Western Europe, and the United States.

Subjects ≥ 18 years of age admitted to the hospital with acute respiratory symptoms will undergo a 2-step screening process. Subjects who are anticipated to be eligible for this study and who were not tested for RSV upon admission to the hospital will be invited to consent to influenza and RSV testing of nasal swabs to determine eligibility. Influenza and RSV-testing at screening will be performed using the test available in the local laboratory. All subjects who have tested for influenza and RSV within 72 hours of screening will be invited to consent to additional screening procedures and to enter the treatment phase of this study.

All study procedures and tests to establish eligibility will be performed as summarized in the Schedule of Assessments (see [Appendix 2](#)). Procedures and tests obtained during hospitalization as part of routine standard of care may be used for eligibility assessment so long as the procedure or test was performed within 72 hours of the Screening Visit. Any incomplete or absent procedures must be obtained after signing the informed consent form

(ICF) as part of the screening visit using the local hospital laboratory and/or equipment. Screening assessments include vital signs, O₂ saturation, nasal swabs for RSV- and influenza-testing at the local laboratory, hematology and serum chemistry blood tests, and urine pregnancy tests in females of child-bearing potential.

Screening (Day -1) and Baseline (Day 1) are mandatory hospital visits. All other study visits may occur in the hospital or hospital or outpatient clinic.

Baseline (Day 1) will be performed within 28 hours of completion of Screening. Subject consent to the treatment portion of the study will occur if consent has not been previously obtained. Questionnaires will include the EQ-5D, Clinical Symptom Score and FLU-PRO. These will be dispensed to the subject for completion prior to all other study procedures. Next the FRAIL Index Questionnaire will be completed by appropriately qualified medical staff (medical doctor, doctor of osteopathy, or nurse practitioner) via subject interview and by reviewing their medical history. Medical history and subject demographics will be evaluated. Nasal swabs will be collected and sent to the central lab. Baseline vital signs (including height, weight, temperature, heart rate, blood pressure, and O₂ saturation), and blood samples (hematology, serum chemistry, and biomarkers) will be collected pre-dose. A pre-dose ECG will be obtained unless an ECG was previously performed for the current admission. Approximately 2 hours +/- 30 minutes post-dose, a second ECG will be obtained and evaluated by the investigator. A PK blood draw for C_{max} will be collected at 2 hours +/- 30 minutes postdose.

Eligible subjects will be randomized in a 1:1 ratio to receive either GS-5806 or matching placebo, stratified into one of the following categories:

1. No chronic airways or lung disease
2. COPD
3. Asthma
4. Other chronic airways or lung disease

Based upon these criteria, subjects will be stratified as specified in the Statistical Analysis section. These stratifications will augment the probability of similar baseline RSV viral loads and duration of RSV viral shedding in the active and placebo groups.

Day 1 (Baseline) through Day 7 will occur every 24 hours +/- 4 hours. No procedures will occur on Days 4 and 6.

On Day 2 and 3, the Clinical Symptom Score and FLU-PRO questionnaire will be dispensed to and completed by subjects prior to all other study procedures. Additional study procedures will include VS with O₂ saturation, and nasal sampling. PK samples will be drawn at on Day 2. Hematology and serum chemistry will also be drawn on Day 3.

The Day 5 visit may occur in the hospital or clinic. The Clinical Symptom Score and FLU-PRO questionnaire will be dispensed to and completed by subjects prior to all other study procedures. Vitals signs, including O₂ saturation will be measured and one nasal swab will be collected for analysis at the central lab. Hematology, serum chemistry, and a final biomarker samples (to include procalcitonin) will be collected. PK samples will also be collected.

The Day 7 visit may occur in the hospital or clinic. The EQ-5D, Clinical Symptom Score and FLU-PRO questionnaires will be dispensed to and completed by prior to all other study procedures. The Healthcare Utilization Assessment will also be completed at this visit. Vitals signs, including O₂ saturation, will be measured and 1 nasal swab will be collected for analysis at the central lab. AEs and concomitant medications will also be evaluated.

The Day 14 (+/- 1 day) visit may occur in the hospital or clinic. The EQ-5D, Clinical Symptom Score and FLU-PRO questionnaires will be dispensed to and completed by subjects prior to all other study procedures. The Healthcare Utilization Assessment will also be completed at this visit. Other visit procedures will include vital signs and O₂ saturation, nasal sampling, and hematology and serum chemistry blood draws. In females of child-bearing potential, a serum pregnancy test will be performed via central laboratory analysis on Day 14. If a subject withdraws early from the study, every attempt should be made to bring the subject back to complete the Day 14 assessments.

The Day 28 visit will occur no earlier than Day 28 and no later than Day 35. This visit will occur in the hospital or clinic. The EQ-5D Questionnaire and the Healthcare Utilization Assessment will be completed at this visit.

Assessment of AEs, SAEs, and concomitant medications will occur continuously throughout the study, from the time of subject consent at Screening (post-consent) through Day 28. AEs and SAEs reporting and follow up will occur as per Section 7 Adverse Events and Toxicity Management.

3.3. Study Treatments

Approximately 200 subjects will be randomized 1:1 to receive GS-5806 or placebo as a single 200 mg dose (four 50mg tablets) on Day 1. The IMP will be administered after the subject has fasted for at least 2 hours. Subjects will remain fasting for approximately 1 hour after dosing. Tablets are not to be crushed, split, dissolved, or chewed. IMP should be handled with gloves.

GS-5806 or placebo will be provided as white, plain-faced, round tablets containing 50 mg GS-5806 (61 mg GS-5806-02, bis-hydrochloride salt dihydrate form of GS-5806).

GS-5806 tablets and matching placebo will be packaged in white, high density polyethylene (HDPE) bottles with desiccant and polyester fiber coil. Each bottle contains 4 tablets and is capped with a white, continuous thread, child-resistant polypropylene screw cap fitted with an induction-sealed, aluminum-faced liner.

The expected duration of subject participation is approximately 1 month, to include Screening through the final visit on Day 28.

3.4. Duration of Treatment

The treatment portion of the study is 1 day, with the only dose administered at the Day 1 visit.

3.5. Source Data

For the purposes of this study, study specific questionnaires (ie, respiratory symptom assessments) are considered source documents and are to be filed with the subject's medical or study records. Electronic data (ie, diagnostic machines that transcribe data directly to a database, or data entered directly into an Electronic Medical Record system) is considered source data, provided the data is not recorded directly on the CRF/eCRF, and provided there is a clear audit trail in the electronic record(s). Template source document worksheets will be prepared by Gilead and provided to sites to use at their discretion. If source document worksheets are used, they are to be kept with the subject's medical or study records as original source documents. No data will be recorded directly on the CRF/eCRF, and any data recorded directly on the CRF/eCRF will not be considered source data.

3.6. Biomarker Testing

3.6.1. Biomarker Samples to Address the Study Objectives

Nasal swab samples collected for RSV testing may be used for detection of other respiratory pathogens that may be the cause of infection. All swab samples will be retained for biomarker testing and/or viral analysis.

Blood for biomarkers will be collected on Day 1 (pre-dose) and Day 5. Biomarkers of inflammation and host response (including but not limited to IP-10, CRP, and procalcitonin) may be measured.

3.6.2. Biomarker Samples for Optional Future Research

PPD



PPD



4. SUBJECT POPULATION

4.1. Number of Subjects and Subject Selection

Subject population will consist of approximately 200 RSV-positive adult subjects from about 60 centers in Australia, New Zealand, Canada, Western Europe, and the United States.

4.2. Inclusion Criteria

Subjects must meet *all* of the following inclusion criteria at Baseline to be eligible for participation in this study:

- An informed consent document signed and dated by the subject or a legal guardian of the subject and Investigator or his/her designee
- Male subjects and female subjects of childbearing potential who engage in heterosexual intercourse must agree to use protocol specified method(s) of contraception as described in [Appendix 5](#).
- Male subjects must agree to use condoms during heterosexual intercourse and avoid sperm donation while enrolled in the study and for at least 90 days after administration of the last dose of study medication.
- All subjects must refrain from blood donation while enrolled in the study and for 30 days after the last dose of IMP.
- ≥ 18 years of age at Screening
- Willing to adhere to protocol specific requirements for contraception
- Admission to the hospital primarily for a respiratory related illness
- New onset or acute worsening of at least 1 respiratory infectious symptom from each category with a duration of ≤ 5 days prior to screening:
 - Upper respiratory tract symptoms: Nasal congestion, runny nose, sore throat, earache
 - Lower respiratory tract symptoms: Cough, sputum production, wheezing, dyspnea, or chest tightness
- Willingness to provide perform necessary study procedures and have available a working telephone or email
- Documented to be RSV-positive at the current admission within 72 hours of screening, or as evaluated at Screening

4.3. Exclusion Criteria

Subjects who meet *any* of the following exclusion criteria are not to be enrolled in this study.

Related to concomitant or previous medication use:

- Use of any investigational medicinal product in the 28 days prior to screening, **OR** use of any investigational monoclonal antibody within 105 days or 5 half-lives of screening, whichever is longer, **OR** use of any investigational RSV vaccine ever
- Use of chronic (> 28 days prior to Screening) systemic immunosuppressive agents (alkylating agents, calcineurin inhibitors, immunophilin-binding but not a calcineurin inhibitor, antimetabolites, polyclonal antibodies, monoclonal antibodies)
- Use of chronic oral prednisone equivalent to > 20 mg/day. Chronic prednisone doses equivalent to ≤ 20 mg/day is acceptable. Short courses (≤ 28 days prior to Screening) of oral prednisone equivalent to > 20 mg/day is acceptable if used > 14 days prior to Screening
- Subjects taking a CYP inhibitor or inducer including but not limited to rifampin, St John's wort, carbamazepine, and phenytonin

Related to medical history:

- Pregnant, breastfeeding, or lactating females
- History of New York Heart Association Class 3 heart failure or greater
- Any clinically significant history of a bleeding disorder (as determined by the investigator) at any time in the past or epistaxis (as determined by the investigator) within 30 days prior to screening
- Known significant abnormality altering the anatomy of the nose or nasopharynx that in, the opinion of the investigator, will preclude obtaining adequate nasal swab sampling in either nasal passage
- Waiting for or recently (within the past 12 months) received a bone marrow, stem cell, or solid organ transplant, or who have received radiation or chemotherapy within 12 months prior to screening
- Known history of HIV/AIDS, hepatitis B or C
- Life-expectancy is judged by the attending physician or investigator to be <90 days
- History of severe dementia or Alzheimer's disease
- History of drug and/or alcohol abuse that, in the opinion of the investigator, may prevent adherence to study activities

Related to medical condition at screening:

- Influenza-positive as determined by a rapid influenza diagnostic test or PCR-based assay for influenza
- New onset of arrhythmia during current admission
- Use of mechanical ventilation during the current admission, not including noninvasive ventilation
- Positive bacteremia or fungemia at the current admission
- Confirmed bacterial, fungal, or non-RSV viral pneumonia, as determined by the investigator
- New cerebrovascular accident or stroke documented at the current admission
- Admission for trauma or emergent or planned surgeries
- Excessive nausea/vomiting at admission, as determined by the investigator, that precludes administration of an orally administered IMP

Related to allergies:

- Known allergy to components of the IMP (microcrystalline cellulose, mannitol, croscarmellose sodium, magnesium stearate, polyvinyl alcohol, titanium dioxide, polyethylene glycol and talc).
- Documented history of acute (anaphylaxis) or delayed (Stevens-Johnson syndrome or epidermal necrolysis) allergy to sulfa drugs

Related to laboratory results:

- Baseline serum creatinine clearance <50 mg/dL
- Baseline AST/ALT > 2x ULN
- Baseline total bilirubin > 2x ULN
- Baseline hemoglobin (Hb) < 10 mg/dL
- Baseline WBC <4000 cells/ μ L
- Baseline neutrophil count < 1500 cells/ μ L
- Baseline platelet count of < 100,000/ μ L

5. INVESTIGATIONAL MEDICINAL PRODUCTS

5.1. Randomization, Blinding, and Treatment Codes

This is a randomized, double-blind, placebo-controlled multi-center study. Eligible subjects will be stratified by presence or absence of airways disease (present, absent). Subjects with airways disease present will be further stratified by type of airways disease (COPD, asthma, or other). Stratification factors (i.e. diagnosis of asthma, COPD, or other chronic airways or lung disease) will be determined by the investigator. Subjects will be randomized in a 1:1 ratio to receive a single dose of GS-5806 or matching placebo.

Assignment to study treatment will be blinded to the study subjects, investigational site personnel, study vendors, and the Sponsor, except for the delegated personnel who will review and check the randomization and drug allocation for accuracy.

5.1.1. Procedures for Breaking Treatment Codes

In the event of a medical emergency where breaking the blind is required to provide medical care to the subject, the investigator may obtain treatment assignment for that subject. Gilead recommends but does not require that the investigator contact the Gilead medical monitor before breaking the blind. Treatment assignment should remain blinded unless that knowledge is necessary to determine subject emergency medical care. The rationale for unblinding must be clearly explained in source documentation and on the case report form/ electronic case report form (CRF/eCRF), along with the date on which the treatment assignment was obtained. The investigator is requested to contact the Gilead medical monitor promptly in case of any treatment unblinding.

Blinding of study treatment is critical to the integrity of this clinical trial and therefore, if a subject's treatment assignment is disclosed to the investigator, a deviation will be recorded. All subjects will be followed until study completion unless consent to do so is specifically withdrawn by the subject.

Gilead Drug Safety and Public Health (DSPH) may independently unblind cases for expedited reporting of suspected unexpected serious adverse reactions (SUSARs).

5.2. Description and Handling of GS-5806

5.2.1. Formulation

GS-5806 will be supplied as white, plain-faced, round tablets containing 50 mg GS-5806 (61 mg GS-5806-02, bis-hydrochloride salt dihydrate form of GS-5806). In addition to the active ingredient, GS-5806 tablets contain the following inactive ingredients: microcrystalline cellulose, mannitol, croscarmellose sodium, magnesium stearate, polyvinyl alcohol, titanium dioxide, polyethylene glycol, and talc.

The supplied matching placebo tablets are identical in physical appearance to the 50 mg GS-5806 tablets and contain the same inactive ingredients.

5.2.2. Packaging and Labeling

GS-5806 tablets and matching placebo are packaged in white, high density polyethylene (HDPE) bottles with desiccant and polyester fiber coil. Each bottle contains 4 tablets and is capped with a white, continuous thread, child-resistant polypropylene screw cap fitted with an induction-sealed, aluminum-faced liner.

All labels for study drugs distributed to investigative sites in the USA and the rest of world (ROW) will meet all applicable requirements of the US Food and Drug Administration (FDA), the EU Annex 13 of Good Manufacturing Practices: Manufacture of investigational medicinal products (July 2010), and/or other local regulations, as applicable.

5.2.3. Storage and Handling

Sufficient quantities of GS-5806 tablets and matching will be shipped to the investigator or qualified designee from Gilead Sciences Materials & Logistics (or its designee).

GS-5806 tablets should be stored at controlled room temperature of 25°C (77°F); excursions are permitted between 15°C and 30°C (59°F and 86°F). The study center will be required to maintain a log of daily temperature readings in the storage area for the duration of the study. To ensure the stability and proper identification, the drug products will be stored in the containers in which they were supplied until unit dosed for individual subjects at the site.

5.3. Dosage and Administration of GS-5806

Eligible subjects will receive a single dose of 200 mg GS-5806 or placebo on Day 1. Doses will be administered with water, after the subject has fasted for at least 2 hours. The entire dose must be taken within 1 hour. Subjects will remain in a fasting condition for at least 1 hour after dosing. IMP is to be handled with gloves. Tablets are not to be crushed, split, dissolved, or chewed.

5.4. Prior and Concomitant Medications

Subjects may not have received any of the following prior medications:

- Any investigational medicinal product in the 28 days prior to screening
- Any investigational monoclonal antibody within 105 days or 5 half-lives of screening (whichever is longer)
- Any investigational RSV vaccine(s) at any time in the past

The following concomitant medications are prohibited:

- Use of chronic (> 28 days prior to Screening) systemic immunosuppressive agents (eg alkylating agents, calcineurin inhibitors, immunophilin-binding but not a calcineurin inhibitor, antimetabolites, polyclonal antibodies, monoclonal antibodies)

- Use of chronic oral prednisone equivalent to > 20 mg/day. Chronic prednisone doses equivalent to ≤ 20 mg/day is acceptable. Short courses (≤ 28 days prior to Screening) of oral prednisone equivalent to > 20 mg/day are acceptable if used > 14 days prior to Screening.
- CYP inhibitors or inducers including but not limited to rifampin, St John's wort, carbamazepine, and phenytoin

5.5. Accountability for GS-5806

The investigator is responsible for ensuring adequate accountability of all used and unused IMP bottles. This includes acknowledgement of receipt of each shipment of IMP (quantity and condition).

GS-5806 accountability records will be provided to each study site to:

- Record the date received and quantity of IMP bottles.
- Record the date, subject number, subject initials, the IMP bottle number dispensed.
- Record the date, quantity of used and unused IMP returned, along with the initials of the person recording the information.

5.5.1. Investigational Medicinal Product Return or Disposal

At the site initiation visit or first monitoring visit, the study monitor will evaluate each study center's IMP disposal procedures and provide appropriate instruction for return or destruction of unused IMP supplies. If the site has an appropriate Standard Operating Procedure (SOP) for drug destruction (as reviewed and approved by GSI), the site may destroy used and unused IMP supplies performed in accordance with the site's (hospital/pharmacy) SOP after reconciliation has been completed by the site monitor. If the site does not have acceptable procedures in place for drug destruction, arrangements will be made between the site and GSI (or GSI representative) for return of unused IMP supplies. A copy of the site's SOP will be obtained for central files. Where possible, IMP will be destroyed at the site.

Upon study completion, a copy of the Investigational Drug Accountability records must be filed at the site. Another copy will be returned to GSI. If drug is destroyed on site, the Investigator must maintain accurate records for all IMP destroyed. Records must show the identification and quantity of each unit destroyed, the method of destruction, and person who disposed of the drug. All IMP records must be maintained at the site and copies must be submitted to GSI at the end of the study.

6. STUDY PROCEDURES

All study procedures to be completed for each subject enrolled in the study will be performed as summarized in the Schedule of Assessments ([Appendix 2](#)) and described in the following text. Additional information is provided in the study procedures manual.

The investigator is responsible for ensuring the study is conducted in accordance with the procedures and evaluations described in this protocol. Investigators must document any deviation or departure from protocol procedures, regardless of causality, and notify the sponsor or contract research organization (CRO).

6.1. Subject Enrollment and Treatment Assignment

6.1.1. Screening Visit (Day -1)

Potential subjects who were not screened for RSV upon hospital admission will be approached with the RSV-testing informed consent form (ICF), followed by the treatment arm ICF upon receipt of positive RSV results. The Principal Investigator or a medically qualified Sub-Investigator (MD, DO, or nurse practitioner) must review and discuss the study with each subject prior to consent. All screening assessments must be performed while the subject is hospitalized, and after obtaining written consent. Should the following procedures be performed as part of standard of care during admission to the hospital and within 72 hours of screening, the results may be used to support subject eligibility or baseline status:

- RSV-testing
- Influenza-testing
- ECG
- Hematology and serum chemistry blood tests (to include WBC with differential, Hgb, platelets, BUN, creatinine, AST, ALT, and total bilirubin)
- Urine pregnancy test, as applicable

No procedures may be performed prior to obtaining written informed consent. All screening labs and procedures will be performed locally and results will be reviewed by the investigator prior to IMP administration. Screening for all subjects must begin no more than 28 hours after initial hospitalization.

Day -1 is a mandatory inpatient hospital visit. The following procedures will be performed at Screening:

- Obtain written informed consent. Must be performed by a study staff member with appropriate medical training (an MD, DO, or nurse practitioner)
- Collection of nasal swab sample for RSV-testing at the local laboratory

- Collection of 1 nasal swab for influenza-testing at the local laboratory
- Vital signs including O₂ saturation
- Blood sample collection for local laboratory analyses, unless results exist from hospital admission:
 - Hematology
 - Serum Chemistry
- Urine pregnancy test in women unable to confirm menopause, hysterectomy and/or bilateral oophorectomy
- Review of all concomitant medications, and any AEs occurring after signing of the consent form

Subjects meeting all of the inclusion criteria and none of the exclusion criteria will be randomized into the study. Under the following conditions, Screening and Baseline (Day 1) may occur on the same day:

- Qualitative RSV PCR test results are available on the same day as testing, or positive RSV results are available from the current admission
- All other required lab results and procedures are available and satisfy the inclusion/exclusion criteria

From the time of consent through the first administration of IMP, record all SAEs, as well as any AEs, and all concomitant medications in the subject source and in the electronic case report form (eCRF). See Section 7 Adverse Events and Toxicity Management for additional details.

6.1.2. Baseline Assessments (Day 1)

Baseline / Day 1 will occur within 28 hours of completion of Screening. This visit is a mandatory hospital visit. The following procedures will be performed and documented on Day 1:

- Questionnaire assessment, prior to all other study procedures:
 - EQ-5D
 - FLU-PRO
 - FRAIL
 - Clinical Symptom Score

- Collection of medical history and demographics
- Height and weight
- Collection of nasal swab sample for analysis at the central lab
- Blood sample collection for central laboratory analysis:
 - Hematology
 - Serum Chemistry
 - Biomarker
- ECG:
 - Pre-dose ECG, unless a recent ECG is available from the current hospital admission
 - ECG taken 2 hours +/- 30 minutes post-dose
- Oxygen saturation on room air (pre-dose only)
- Vital signs:
 - 5 to 10 minutes pre-dose
 - 15 minutes and 30 minutes post-dose
- IMP administration
- PK sampling 2 hours +/- 30 minutes post-dose
- Assessment of AEs and concomitant medications

6.2. Randomization and Treatment Assessments

After all baseline assessments have been completed and subjects have been randomized via IXRS. Randomization to GS-5806 or placebo will be based on a randomization schedule prepared by Gilead and/or designee before the start of the study. Eligible subjects will be centrally randomized at Baseline via Interactive Voice/Web Response System (IXRS). Prior to randomization, eligible subjects will be stratified by the following:

- No chronic airways or lung disease
- COPD
- Asthma
- Other chronic airways or lung disease

Within these strata, subjects will be randomized in a 1:1 ratio to receive blinded GS-5806 or placebo treatment.

Subjects will receive a single dose of 200 mg (four 50 mg tablets) of GS-5806 or matching placebo at Day 1. All IMP will be administered with water, after the subject has been fasting for a minimum of 2 hours. Subjects will remain in a fasting condition for 1 hour post-dose. Tablets are not to be crushed, chewed, split, or dissolved, and should always be handled with gloves.

Day 1 (Baseline) through Day 7 will occur every 24 hours +/- 4 hours. There will be no procedures performed on Days 4 and 6.

6.3. Days 2 and 3

These visits may be conducted in the hospital or clinic.

The following assessments will be performed and documented at these visits:

- Questionnaire assessment, prior to all other study procedures:
 - FLU-PRO
 - Clinical Symptom Score
- Vital signs, including O₂ saturation
- Collection of nasal swab sample for analysis at the central lab
- PK draw (Day 3 only)
- Blood sample collection for central laboratory analysis (Day 3 only):
 - Hematology
 - Serum Chemistry
- Assessment of AEs and concomitant medications

6.4. Day 5

The Day 5 visit may occur at the hospital or clinic. The following assessments will be performed:

- Questionnaire assessment, prior to all other study procedures:
 - FLU-PRO
 - Clinical Symptom Score

- Vital Signs, including O₂ saturation
- Collection of 1 nasal swab sample of analysis at the central lab
- Blood sample collection
 - Hematology
 - Serum Chemistry
 - Biomarker
- PK draw
- Assessment of AEs and concomitant medications

6.5. Day 7 and Day 14 (+/- 1 day)

The Day 7 and Day 14 (+/- 1 day) visits may occur at the hospital or clinic. The following assessments will be performed:

- Questionnaire assessment, prior to all other study procedures:
 - EQ-5D
 - FLU-PRO
 - Clinical Symptom Score
- Healthcare Utilization assessment
- Vital Signs, including O₂ saturation
- Collection of 1 nasal swab sample of analysis at the central lab
- Blood sample collection (Day 14 only)
 - Hematology
 - Serum Chemistry
- Serum pregnancy test for females of child-bearing potential (Day 14 only)
- Assessment of AEs and concomitant medications

6.6. Day 28 (+ 7 days)

This visit will occur no earlier than Day 28 and no later than Day 35. This visit may occur in the hospital or clinic. The following assessments will be performed and documented on Day 28:

- Questionnaire assessment, prior to all other study procedures:
 - EQ-5D
- Healthcare Utilization Assessment
- Assessment of AEs and concomitant medications

6.7. Assessments for Premature Discontinuation from Study

If a subject discontinues from the study (for example, as a result of an AE), every attempt should be made to keep the subject in the study and continue to perform the required study-related follow-up and procedures (see Sections 6.3 through 6.6). If this is not possible or acceptable to the subject or investigator, the subject may be withdrawn from the study.

If a subject withdraws early from the study, for any reason, every attempt should be made to bring the subject back for the Day 14 assessments (if not already done).

Reasons for premature discontinuation from the study include:

- Intercurrent illness that would, in the judgment of the investigator, affect assessments of clinical status to a significant degree.
- Subject request to discontinue for any reason
- Subject noncompliance
- Pregnancy during the study; refer to [Appendix 5](#)
- Discontinuation of the study at the request of Gilead, a regulatory agency or an institutional review board or independent ethics committee (IRB/IEC)

6.8. Study Assessments

6.8.1. Nasal Swabs and Virology

6.8.1.1. Samples Collected

Nasal sampling will be performed at all study visits according to the specifications in the study manual. One sample will be obtained at each of the following visits: Screening, Baseline, and Days 2, 3, 5, 7, and 14.

At Screening, nasal swab samples will be analyzed for RSV at the site's local laboratory. One swab will be collected, as per the local laboratory test methods. If the test result is available the same day as the sample is collected, a subject found positive for RSV may progress to Baseline (Day 1) for same day dosing of IMP provided that all required lab results and procedures are available and satisfy the inclusion/exclusion criteria.

One nasal swab will be collected at screening for influenza rapid-diagnostic test or PCR-based assay for influenza at the local laboratory. One swab sample will be collected from 1 naris (opposite naris of RSV swab) and analyzed, unless documentation exists within the subject's admission records that indicate a positive or negative influenza result.

One nasal swab or nasopharyngeal swab sample will be obtained, at Baseline (Day 1), Days 2, 3, 5, 7, and 14 for qRT-PCR RSV-testing at the central laboratory. Samples will be placed in individual tubes and stored at -80°C until shipment to the central laboratory for analysis.

6.8.1.2. Virology and Resistance Monitoring

To assess the potential for emergence of resistance to GS-5806, population sequencing of the RSV F gene will be conducted on evaluable nasal swab samples collected from GS-5806 and placebo-treated RSV infected patients according to the resistance analysis plan. Any mutation in the F gene identified by population sequencing in GS-5806-treated subjects relative to the pretreatment baseline sequence, will be characterized phenotypically following their introduction into wild-type RSV using an established reverse genetics system. The susceptibility of the F mutant recombinants to GS-5806 will be assessed in cell-based antiviral susceptibility assays to determine whether each treatment-emergent mutation (TEM) confers reduced susceptibility to the compound.

6.8.2. Patient Reported Outcomes / Questionnaires / Other Assessments

All questionnaires will be administered after consent and prior to all other study procedures. Questionnaires completed by the subject will be completed first, followed by those questionnaires requiring evaluation and completion by the study staff. Three (3) questionnaires will be utilized in this study. All questionnaires may be found in the Study Manual. Information required to complete the fourth assessment, the Healthcare Utilization Assessment, will also be included in the Study Manual:

6.8.2.1. EQ-5D General Health Survey

This is a validated 5-item instrument used as a measure of general health outcomes. This questionnaire will be used to assess overall health improvement during this study and will be administered at Baseline (Day 1), and Days 7 and 14. It should be completed before questionnaires and assessments requiring study personnel to interview or converse with patients (such as the FRAIL or Healthcare Utilization Assessment).

6.8.2.2. FLU-PRO

The FLU-PRO is currently being validated for evaluation of symptoms in patients who are infected with influenza. Given that there are no validated tools for evaluation of RSV symptoms, and there is significant overlap between RSV symptoms and influenza symptoms, this tool will be used to assess change in RSV symptoms in this study. This questionnaire will be completed at Baseline (Day 1), Days 2, 3, 5, 7, and 14. It should be completed before questionnaires and assessments requiring study personnel to interview or converse with patients (such as the FRAIL or Healthcare Utilization Assessment).

6.8.2.3. Frailty Index (FRAIL) score

The Frailty Index Score is a validated 5-item scale (FRAIL: fatigue, resistance, ambulation, illnesses, and loss of weight) that has been demonstrated to predict mortality in elderly populations. The Frailty Index score is determined through physician interview of the subject. The principal investigator or medically qualified sub-investigator (medical doctor, doctor of osteopathy, or nurse practitioner) must complete this questionnaire. The Frailty Index score will be evaluated at Baseline, after subjects complete any written questionnaires (such as the EQ-5D and FLU-PRO) and entered into the subject source and eCRFs.

6.8.2.4. Clinical Symptom Score

Study GS-US-218-1013 demonstrated that treatment with GS-5806 was able to significantly reduce clinical symptoms associated with RSV infection. This symptom score assesses the symptoms that were most significantly affected, includes additional symptoms that may be pertinent to this patient population, and assesses these using a 4-point (0-3) scoring system (none, mild, moderate, severe). Completed at Baseline (Day 1), Days 2, 3, 5, 7, and 14.

6.8.2.5. Healthcare Utilization Assessment

Healthcare utilization patterns after the subject has been enrolled into this study will be evaluated at Days 7, 14, and 28 after subjects complete any written questionnaires. Healthcare utilization assessments will include the use of ICU, use of intermediate care facilities, or nursing homes; number of days on supplemental O₂ during the study; use of mechanical ventilation; and number of subsequent unplanned clinic visits, emergency room visits, urgent care visits, and rehospitalizations (for any respiratory illness).

These assessments will be determined on Days 7, 14 and 28 by interviewing the subject and by assessing information in the subject's medical records. Results will be documented in the subject source documents and eCRF. The information collected for assessments will be entered into the eCRF system. Source and eCRF for these assessments will be reviewed and verified by the site monitor. Other healthcare utilization assessments, such as length of stay in the hospital and death will be collected as part of adverse event safety assessments.

The Healthcare Utilization Assessment will be completed after subjects complete all other questionnaires (such as the EQ-5D, Clinical Symptom Score and FLU-PRO). Unplanned visits, for the purpose of this assessment, will be defined as any visit to a clinic due to the continuation or worsening of respiratory symptoms similar to those for which the hospital admission occurred.

6.8.3. Vital Signs

This assessment will include temperature, heart rate, respiratory rate, and blood pressure. The subject is required to sit quietly for approximately 2 minutes prior to obtaining VS. At Baseline VS will be obtained 5-10 minutes prior to dosing IMP, and at 15 minutes and 30 minutes post-dose. O₂ saturation is part of VS and will be measured as specified by the protocol. Vital signs will be collected at Screening, Baseline (Day 1), Days 2, 3, 5, 7, and 14.

6.8.4. Oxygen Saturation

Oxygen (O₂) saturation will be recorded while breathing room air, even if the subject is dependent on O₂ supplementation. If the subject is receiving supplemental O₂, the O₂ source will be removed for a period of 30 seconds prior to this assessment. The O₂ saturation will be documented in the source at regular intervals (approximately every 15 seconds) during the 2-minute testing period. O₂ saturation evaluation will be considered complete when the 2-minute period has elapsed, or when the subject achieves a saturation of 87%, whichever is achieved first. The lowest O₂ saturation recorded over the 2-minute interval will be captured in the eCRF. O₂ saturation will be collected at Screening, Baseline (Day 1), Days 2, 3, 5, 7, and 14.

6.8.5. Electrocardiogram (ECG)

At Baseline, a pre-dose (baseline) ECG will be performed on the local hospital equipment, unless an ECG is available from the current admission records. A second ECG will also be obtained, approximately 2 hours +/- 30 minutes post-dose.

6.8.6. Safety Labs

When available, the most recent laboratory values from the current hospitalization will be used for eligibility assessment. If an existing laboratory value is not available for eligibility assessment, the test will be performed using the local hospital laboratory. All testing of samples obtained after randomization will be performed at a central laboratory selected by GSI.

Blood specimens will be tested for, AST, ALT, and total bilirubin at Screening, Baseline (pre-dose), Days 3, 5, and 14.

Urine pregnancy tests will occur for all females of child-bearing potential at Screening, followed by a serum pregnancy test on Day 14.

6.8.7. Plasma PK

Blood will be drawn for PK at Baseline approximately 2 hours +/- 30 minutes (T_{max}) after IMP administration. Additional PK samples will be drawn anytime on Days 3 and 5.

6.8.8. Biomarkers

Blood for biomarkers will be collected from all subjects at Baseline (pre-dose) and Day 5. Biomarkers of inflammation, procalcitonin, and host response (e.g. IP-10, CRP, etc.) may be measured.

Nasal swab samples collected for RSV testing may be used for detection of other respiratory pathogens that may be the cause of infection. All swab samples will be retained for biomarker testing and/or viral analysis.

7. ADVERSE EVENTS AND TOXICITY MANAGEMENT

7.1. Definitions of Adverse Events, Adverse Reactions, and Serious Adverse Events

7.1.1. Adverse Events

An adverse event (AE) is any untoward medical occurrence in a clinical study subject administered a pharmaceutical product, which does not necessarily have a causal relationship with the treatment. An AE can therefore be any unfavorable and/or unintended sign, symptom, or disease temporally associated with the use of a medicinal product, whether or not considered related to the medicinal product. AEs may also include pre- or post-treatment complications that occur as a result of protocol specified procedures, lack of efficacy, overdose, drug abuse/misuse reports, or occupational exposure. Preexisting events that increase in severity or change in nature during or as a consequence of participation in the clinical study will also be considered AEs.

An AE does not include the following:

- Medical or surgical procedures such as surgery, endoscopy, tooth extraction, and transfusion. The condition that led to the procedure may be an AE and must be reported.
- Pre-existing diseases, conditions, or laboratory abnormalities present or detected before the screening visit that do not worsen
- Situations where an untoward medical occurrence has not occurred (e.g., hospitalization for elective surgery, social and/or convenience admissions)
- Overdose without clinical sequelae
- Any medical condition or clinically significant laboratory abnormality with an onset date before the consent form is signed and not related to a protocol-associated procedure is not an AE. It is considered to be pre-existing and should be documented on the medical history CRF.

7.1.2. Serious Adverse Events

A **serious adverse event** (SAE) is defined as an event that, at any dose, results in the following:

- Death
- Life-threatening (Note: The term “life-threatening” in the definition of “serious” refers to an event in which the subject was at risk of death at the time of the event; it does not refer to an event that hypothetically might have caused death if it were more severe.)
- In-patient hospitalization or prolongation of existing hospitalization

- Persistent or significant disability/incapacity
- A congenital anomaly/birth defect
- A medically important event or reaction: such events may not be immediately life-threatening or result in death or hospitalization but may jeopardize the subject or may require intervention to prevent one of the other outcomes constituting SAEs. Medical and scientific judgment must be exercised to determine whether such an event is a reportable under expedited reporting rules. Examples of medically important events include intensive treatment in an emergency room or at home for allergic bronchospasm; blood dyscrasias or convulsions that do not result in hospitalization; and development of drug dependency or drug abuse. For the avoidance of doubt, infections resulting from contaminated medicinal product will be considered a medically important event and subject to expedited reporting requirements.

7.1.3. Clinical Laboratory Abnormalities and Other Abnormal Assessments as Adverse Events or Serious Adverse Events

Laboratory abnormalities without clinical significance are not recorded as AEs or SAEs. However, laboratory abnormalities (e.g. clinical chemistry, hematology, etc.) that require medical or surgical intervention or lead to IMP interruption, modification, or discontinuation must be recorded as an AE, as well as an SAE, if applicable. In addition, laboratory or other abnormal assessments (e.g. electrocardiogram, x-rays, vital signs, etc) that are associated with signs and/or symptoms must be recorded as an AE or SAE if they meet the definition of an AE or SAE as described in Sections 7.1.1 and 7.1.2. If the laboratory abnormality is part of a syndrome, record the syndrome or diagnosis (eg, anemia), not the laboratory result (ie, decreased hemoglobin).

For specific information on handling of clinical laboratory abnormalities in this study, please refer to Section 7.5

7.2. Assessment of Adverse Events and Serious Adverse Events

The investigator or qualified subinvestigator is responsible for assessing AEs and SAEs for causality and severity, and for final review and confirmation of accuracy of event information and assessments.

7.2.1. Assessment of Causality for Study Drugs and Procedures

The investigator or qualified subinvestigator is responsible for assessing the relationship to IMP therapy using clinical judgment and the following considerations:

- **No:** Evidence exists that the AE has an etiology other than the IMP. For SAEs, an alternative causality must be provided (eg, pre-existing condition, underlying disease, intercurrent illness, or concomitant medication).
- **Yes:** There is reasonable possibility that the event may have been caused by the investigational medicinal product.

It should be emphasized that ineffective treatment should not be considered as causally related in the context of AE reporting.

The relationship to study procedures (eg, invasive procedures such as venipuncture or biopsy) should be assessed using the following considerations:

- **No: Evidence** exists that the AE has an etiology other than the study procedure.
- **Yes:** The AE occurred as a result of protocol procedures, (eg., venipuncture)

7.2.2. Assessment of Severity

Severity should be recorded and graded according to the GSI Grading Scale for Severity of Adverse Events and Laboratory Abnormalities [Appendix 4](#). For AEs or SAEs associated with laboratory abnormalities, the event should be graded on the basis of the clinical severity in the context of the underlying conditions; this may or may not be in agreement with the grading of the laboratory abnormality

7.3. Investigator Requirements and Instructions for Reporting Adverse Events and Serious Adverse Events to Gilead

All SAEs, regardless of cause or relationship, that occur after the subject first consents to participate in the study (ie, signing the informed consent) and throughout the duration of the study, including the protocol-required post treatment follow-up period, must be reported to the CRF/eCRF database and Gilead Drug Safety and Public Health (DSPH) as instructed. This also includes any SAEs resulting from protocol-associated procedures performed from screening onwards.

- All AEs, regardless of cause or relationship, that occur from initiation of study medication until 4 weeks after last administration of study IMP must be reported to the CRF/eCRF database as instructed.
- Any SAEs and deaths that occur after the post treatment follow-up visit but within 30 days of the dose of study IMP, regardless of causality, should also be reported.
- All AEs should be followed up until resolution if possible. If by the last day on study (including the off-study medication follow-up period) the AE has not resolved, then the AE will be followed up until the investigator and/or Gilead Sciences determine that the subject's condition is stable. However, Gilead Sciences may request that certain AEs be followed until resolution.
- Investigators are not obligated to actively seek SAEs after the 30 day period. However, if the investigator learns of any SAEs that occur after study participation has concluded and the event is deemed relevant to the use of IMP, he/she should promptly document and report the event to Gilead DSPH.

- All AEs and SAEs will be recorded in the CRF/eCRF database within the timelines outlined in the CRF/eCRF completion guideline.
- At the time of study start, SAEs will be reported using a paper SAE reporting form. During the study conduct, sites may transition to an electronic SAE (eSAE) system. Gilead will notify sites in writing and provide training and account information prior to implementing an eSAE system.

Serious Adverse Event Paper Reporting Process

- All SAEs will be recorded on the SAE report form and submitted by faxing the report form within 24 hours of the investigator's knowledge of the event to the attention of Gilead DSPH. Gilead DSPH Foster City contact information is as follows: Email: Safety_FC@gilead.com Fax: +1 (650) 522-5477.
- Site personnel record all SAE data in the eCRF database and from there transmit the SAE information to Gilead DSPH within 24 hours of the investigator's knowledge of the event. Detailed instructions can be found in the eCRF completion guidelines.
- If for any reason it is not possible to record the SAE information electronically, ie, the eCRF database is not functioning, record the SAE on the paper serious adverse event reporting form and submit within 24 hours as described above.
- As soon as it is possible to do so, any SAE reported via paper must be transcribed into the eCRF Database according to instructions in the eCRF completion guidelines.
- If an SAE has been reported via a paper form because the eCRF database has been locked, no further action is necessary.
- All AEs and SAEs will be recorded in the eCRF database within the timelines outlined in the eCRF completion guideline.

Electronic Serious Adverse Event (eSAE) Reporting Process

- Site personnel record all SAE data in the eCRF database and from there transmit the SAE information to Gilead DSPH within 24 hours of the investigator's knowledge of the event. Detailed instructions can be found in the eCRF completion guidelines.
- If for any reason it is not possible to record the SAE information electronically, ie, the eCRF database is not functioning, record the SAE on the paper SAE reporting form and submit within 24 hours to Email: Safety_FC@gilead.com Fax: +1 (650) 522-5477.
- As soon as it is possible to do so, any SAE reported via paper must be transcribed into the eCRF Database according to instructions in the eCRF completion guidelines.
- If an SAE has been reported via a paper form because the eCRF database has been locked, no further action is necessary.

- All AEs and SAEs will be recorded in the CRF/eCRF database within the timelines outlined in the CRF/eCRF completion guideline.
- Site personnel record all SAE data in the eCRF database and from there transmit the SAE information to Gilead DSPH within 24 hours of the investigator's knowledge of the event. Detailed instructions can be found in the eCRF completion guidelines.
- If for any reason it is not possible to record the SAE information electronically, ie, the eCRF database is not functioning, record the SAE on the paper SAE reporting form and submit within 24 hours as described above.
- As soon as it is possible to do so, any SAE reported via paper must be transcribed into the eCRF Database according to instructions in the eCRF completion guidelines.
- If an SAE has been reported via a paper form because the eCRF database has been locked, no further action is necessary.
- For fatal or life-threatening events, copies of hospital case reports, autopsy reports, and other documents are also to be submitted by e-mail or fax when requested and applicable. Transmission of such documents should occur without personal subject identification, maintaining the traceability of a document to the subject identifiers.
- Additional information may be requested to ensure the timely completion of accurate safety reports.
- Any medications necessary for treatment of the SAE must be recorded onto the concomitant medication section of the subject's CRF/eCRF and the event description section of the SAE form.

7.4. Gilead Reporting Requirements

Depending on relevant local legislation or regulations, including the applicable US FDA Code of Federal Regulations, the EU Clinical Trials Directive (2001/20/EC) and relevant updates, and other country-specific legislation or regulations, Gilead may be required to expedite to worldwide regulatory agencies reports of SAEs, serious adverse drug reactions (SADRs), or suspected unexpected serious adverse reactions (SUSARs). In accordance with the EU Clinical Trials Directive (2001/20/EC), Gilead or a specified designee will notify worldwide regulatory agencies and the relevant Independent Ethics Committee (IEC) in concerned Member States of applicable SUSARs as outlined in current regulations.

Assessment of expectedness for SAEs will be determined by Gilead using reference safety information specified in the investigator's brochure or relevant local label as applicable.

All investigators will receive a safety letter notifying them of relevant SUSAR reports. The investigator should notify the IRB or IEC of SUSAR reports as soon as is practical, where this is required by local regulatory agencies, and in accordance with the local institutional policy.

7.5. Toxicity Management

All clinical and clinically significant laboratory toxicities will be managed according to uniform guidelines detailed in [Appendix 3](#).

Clinical events and clinically significant laboratory abnormalities will be graded according to the Table for GSI Grading Scale for Severity of Adverse Events and Laboratory Abnormalities ([Appendix 4](#)).

Any questions regarding toxicity management should be directed to the Gilead Sciences Medical Monitor.

7.6. Special Situations Reports

7.6.1. Definitions of Special Situations

Special situation reports include all reports of medication error, abuse, misuse, overdose, and pregnancy reports regardless of an associated AE. Also includes reports of adverse reactions in infants following exposure from breastfeeding, and reports of adverse reactions associated with product complaints.

A pregnancy report is used to report any pregnancy following maternal or paternal exposure to the medicinal product.

Medication error is any unintentional error in the prescribing, dispensing, or administration of a medicinal product while in the control of the health care provider, subject, or consumer.

Abuse is defined as persistent or sporadic intentional excessive use of a medicinal product by a subject.

Misuse is defined as any intentional or inappropriate use of a medicinal product that is not in accordance with the protocol instructions or the local prescribing information.

An overdose is defined as an accidental or intentional administration of a quantity of a medicinal product given per administration or cumulatively which is above the maximum recommended dose as per protocol or in the product labelling (as it applies to the daily dose of the subject in question). In cases of a discrepancy in drug accountability, overdose will be established only when it is clear that the subject has taken the excess dose(s). Overdose cannot be established when the subject cannot account for the discrepancy except in cases in which the investigator has reason to suspect that the subject has taken the additional dose(s).

Product complaint is defined as complaints arising from potential deviations in the manufacture, packaging, or distribution of the medicinal product.

7.6.2. Instructions for Reporting Special Situations

7.6.2.1. Instructions for Reporting Pregnancies

The investigator should report all pregnancies that are identified after the subject first consents to participate in the study (ie, signs the informed consent) and throughout the study, including the post study drug follow-up period, to Gilead DSPH using the pregnancy report form within 24 hours of becoming aware of the pregnancy. Gilead DSPH Foster City contact information is as follows: Email: Safety_FC@gilead.com, Fax: +1 (650) 522-5477.

The pregnancy itself is not considered an AE nor is an induced elective abortion to terminate a pregnancy without medical reasons.

Any premature termination of pregnancy (e.g. a spontaneous abortion, an induced therapeutic abortion due to complications or other medical reasons) must be reported within 24 hours as an SAE. The underlying medical reason for this procedure should be recorded as the AE term.

A spontaneous abortion is always considered to be an SAE and will be reported as described in Section 7.3. Furthermore, any SAE occurring as an adverse pregnancy outcome post study must be reported to Gilead DSPH.

The subject should receive appropriate monitoring and care until the conclusion of the pregnancy. The outcome should be reported to Gilead DSPH using the pregnancy outcome report form. If the end of the pregnancy occurs after the study has been completed, the outcome should be reported directly to Gilead DSPH. Gilead DSPH contact information is as follows: Email: Safety_FC@gilead.com and Fax: +1 (650) 522-5477.

Pregnancies of female partners of male study subjects exposed to Gilead or other study drugs must also be reported and relevant information should be submitted to Gilead DSPH using the pregnancy and pregnancy outcome forms within 24 hours. Monitoring of the subject should continue until the conclusion of the pregnancy. If the end of the pregnancy occurs after the study has been completed, the outcome should be reported directly to Gilead DSPH as follows: Email: Safety_FC@gilead.com and Fax: +1 (650) 522-5477.

Refer to [Appendix 5](#) for Pregnancy Precautions, Definition for Female of Childbearing Potential, and Contraceptive Recommendations.

7.6.2.2. Reporting Other Special Situations

All other special situation reports must be reported on the special situations report form and forwarded to Gilead DSPH within 24 hours of the investigator becoming aware of the situation. These reports must consist of situations that involve study IMP, but do not apply to concomitant medications. Except for situations that result in AEs, special situations involving concomitant medications will not be reported. Any inappropriate use of medications prohibited by this protocol should not be reported as “misuse,” but may be more appropriately documented as a protocol deviation. All clinical sequelae in relation to these

special situation reports will be reported as AEs or SAEs at the same time using the AE CRF/eCRF and/or the SAE report form. Details of the symptoms and signs, clinical management, and outcome will be reported, when available.

Gilead DSPH Foster City contact information is as follows:

Email: Safety_FC@gilead.com

Fax: +1 (650) 522-5477

8. STATISTICAL CONSIDERATIONS

8.1. Analysis Objectives and Endpoints

8.1.1. Analysis Objectives

The primary objective of this study is to evaluate the effects of GS-5806 on RSV viral load in RSV-positive adults hospitalized with acute respiratory infectious symptoms.

The secondary objectives of this study are to evaluate:

- The effect of GS-5806 on the Clinical Symptom Score
- The effect of GS-5806 on the length of hospital stay
- The effect of GS-5806 on the rate of unplanned healthcare encounters (clinic visits, emergency room visits, urgent care visits, and rehospitalizations) related to a respiratory illness after hospital discharge.
- The effect of GS-5806 on change in the FLU-PRO score from Baseline
- The PK, safety, and tolerability of GS-5806

8.1.2. Primary Endpoint

The primary endpoint is the area under the curve (AUC) of \log_{10} viral load from Day 1 to Day 7.

8.1.3. Secondary Endpoints

The key secondary endpoints are:

- AUC of change in the Clinical Symptom Score (calculated by subtracting new value from each timepoint from baseline value) from Baseline to Day 7
- Duration of hospital stay following IMP administration
- Rate of unplanned medical encounters (clinic visits, emergency room visits, urgent care visits, and rehospitalizations) related to a respiratory illness after initial hospital discharge through Day 28
- AUC of change in the FLU-PRO score (calculated by subtracting new value from each timepoint from baseline value) from Baseline to Day 7

8.2. Analysis Conventions

8.2.1. Analysis Sets

8.2.1.1. Efficacy

The primary analysis set for efficacy analyses will be the evaluable analysis set, which will include those who have an RSV log₁₀ viral load greater than the LLOQ of the qRT-PCR assay in the pre-dose Day 1 nasal swab sample, have a minimum of 3 nasal swabs (including baseline swab; swabs do not have to be consecutive), and have completed IMP administration.

The full analysis set (FAS) will also be used for specified efficacy analyses and is defined as all subjects who were randomized into the study and received at least a partial dose of study medication. Subjects will be included in the group according to actual treatment received.

8.2.1.2. Safety

The primary analysis set for safety analyses is defined as all subjects who received a dose of IMP.

All data collected during treatment will be included in the safety summaries.

8.2.1.3. Pharmacokinetics

The PK analysis set will include all subjects in the safety analysis set who have evaluable PK data at the time points of interest.

8.3. Data Handling Conventions

Missing data can have an impact upon the interpretation of the trial data. As this study is of short duration, it is anticipated that missing data will be minimal. In general, values for missing data will not be imputed. For laboratory data, a missing baseline value will be replaced with a screening value, if available; otherwise it will be treated as normal (ie, Grade 0; no toxicity grade) for the summary of graded laboratory abnormalities. A retest value may be used if the first test is invalidated (eg, specimen hemolyzed).

Values will not be imputed for missing vital sign and other safety data; however, a missing baseline value will be replaced with a Screening value, if available.

Details for the handling of missing data due to subject discontinuation or other reasons, including unusable and spurious data, and rules for determining major and minor protocol deviations will be described in the SAP.

All available data for subjects that do not complete the study will be included in the data listings.

Tables that include both individual subject PK data and summary statistics will present all available data, but only subjects in the PK analysis will be included in the summary statistics.

Viral load data will be log transformed prior to analyses.

8.4. Demographic Data and Baseline Characteristics

Demographic and baseline measurements will be summarized using standard descriptive methods.

Demographic summaries will include sex, race/ethnicity (excluding Australia), and age.

Baseline data will include a summary of body weight, height, BMI, presence or absence of chronic airways disease, and type of chronic airways disease (COPD, asthma, or other).

For categorical demographic and baseline characteristics, a Fisher's exact test will be used to compare treatment arms. For continuous demographic and baseline characteristics, a Wilcoxon rank sum test will be used to compare treatment arms.

8.5. Efficacy Analysis

8.5.1. Primary Analysis

The primary endpoint is the area under the curve (AUC) of \log_{10} viral load from Day 1 to Day 7. The primary analysis will be performed on subjects included in the efficacy evaluable population. To test the null hypothesis that there is no difference between the GS-5806 and placebo treatment groups in the mean AUC viral load, a parametric analysis of covariance (ANCOVA) model with corresponding baseline viral load as a covariate will be used, with a 2-sided 0.05 level. Adjusted means and 95% confidence intervals (CIs) will also be presented.

8.5.2. Secondary Analyses

The evaluable analysis set will be used for all summaries and analyses of secondary endpoints. All secondary endpoints will be analyzed using 2-sided tests to compare treatment differences.

AUC of change in the Clinical Symptom Score from Baseline to Day 7 will be analyzed using an ANCOVA model with baseline as a covariate. Adjusted means and 95% CIs will be presented for this analysis. Duration of hospital stay following IMP administration will be analyzed using an analysis of variance (ANOVA) model with treatment as a fixed effect. Means and 95% CIs will be presented for this analysis. The rate of unplanned medical encounters related to respiratory illness after initial hospitalization discharge through Day 28 will be analyzed using a negative binomial regression method with an offset parameter to account for follow-up time. The total number of unplanned medical encounters and the average number of medical encounters per person will also be presented. AUC of change in the FLU-PRO score from Baseline to Day 7 will be analyzed using an ANCOVA model with baseline as a covariate. Adjusted means and 95% CIs will be presented for this analysis. Nonparametric methods such as a Wilcoxon rank sum tests may be implemented if statistical model assumptions are not met.

In order to account for multiple hypothesis testing of endpoints, a family alpha spending rule will be used to control the Type 1 error rate of 0.05 across the primary and secondary endpoints, testing for differences between treatment groups. The primary endpoint analysis will serve as the gatekeeper for the secondary analyses. If the primary null hypothesis is rejected, then the following secondary endpoints will be tested sequentially at $\alpha = 0.05$ based upon the closed testing procedure {11631}.

1. AUC of change in the Clinical Symptom Score from Day 1 (pre-dose) to Day 7
2. Duration of hospital stay following IMP administration
3. Rate of unplanned medical encounters (clinic visits, emergency room visits, urgent care visits, and rehospitalizations) related to a respiratory illness after initial hospitalization discharge through Day 28
4. AUC of change in the FLU-PRO score from Day 1 (pre-dose) to Day 7

8.5.3. Exploratory Analyses

PPD



PPD



8.6. Safety Analysis

Safety data will be collected and summarized from screening through Day 28. Safety data will be listed by subject and summarized by treatment (active or placebo) using the number of subjects (n and percent) with events/abnormalities for categorical data and using descriptive statistics for continuous data.

8.6.1. Extent of Exposure

A subject's extent of exposure to IMP data will be generated from the IMP administration data. Exposure data will be summarized by treatment group.

8.6.2. Adverse Events

Clinical and laboratory AEs will be coded using the Medical Dictionary for Regulatory Activities (MedDRA). System Organ Class (SOC), High-Level Group Term (HLGT), High-Level Term (HLT), Preferred Term (PT), and Lower-Level Term (LLT) will be attached to the clinical database.

Events will be summarized on the basis of the date of onset for the event. A treatment-emergent AE will be defined as any AE that begins on or after the date of first dose of IMP through Day 28.

Summaries (number and percentage of subjects) of treatment-emergent AEs (by SOC, and PT) will be provided by treatment group:

8.6.3. Laboratory Evaluations

Selected laboratory data will be summarized using only observed data. Data and change from baseline at all scheduled time points will be summarized.

Graded laboratory abnormalities will be defined using the GSI grading scheme in [Appendix 4](#). Grading of laboratory abnormalities for analysis purposes will be performed by GSI.

Incidence of treatment-emergent laboratory abnormalities, defined as values that increase at least 1 toxicity grade from baseline at any time post baseline up to and including Day 28 will be summarized by treatment group. If baseline data are missing, then any graded abnormality (ie, at least a Grade 1) will be considered treatment emergent.

Laboratory abnormalities that occur before the first dose of IMP, or after the subject has been discontinued from treatment for at least 28 days will be included in a data listing.

8.6.4. Other Safety Evaluations

Vital signs and ECG data will be summarized by the observed data and by the change from baseline at each time point. In comparison to pre-treatment (either screening or pre-dose on Study Day 1) values, vital signs and ECG measurements will additionally be summarized using pre-determined clinically relevant thresholds.

8.7. Pharmacokinetic Analysis

Concentrations of GS-5806 will be determined in plasma and using a validated bioanalytical assay. Individual subject GS-5806 concentration time data will be displayed using scheduled sampling times (Days 1, 2, and 4). Descriptive statistics (e.g. n, mean, standard deviation, % CV, median, and range) will be calculated for each sampling time. Plasma concentrations of GS-5806 over time will be plotted in semi-logarithmic and linear formats as mean \pm standard deviation. Plasma concentration time data for each subject will be analyzed using standard non-compartmental methods. PK/PD (pharmacodynamics) relationships, including biomarker data, may be explored as appropriate.

8.8. Sample Size

Sample size calculations are based on results observed in subjects who received placebo in the GS-US-218-0103 study. The sample size calculation assumes the mean AUC of \log_{10} viral load from Day 1 to Day 7 in the placebo group will be $433 \log_{10}$ PFUe \times hour/ml with a corresponding standard deviation of 300 and that 85% of the subjects will be evaluable. Based on these assumptions, with 85 subjects per group there is approximately 80% power to detect a 30% reduction in mean AUC \log_{10} viral load (a treatment difference of $130 \log$ PFUe \times hour/ml) using a 2-sided 0.05-level test. Given an evaluable rate of 85%, a total of 200 subjects will need to be randomized into the study.

8.9. Interim Analysis

An interim analysis of the primary endpoint, AUC of \log_{10} viral load from Day 1 through Day 7, may be conducted after approximately 50% of the enrollment has been achieved. The results from this interim analysis will be reviewed by the DMC, who may recommend early termination for futility if the conditional power is $< 10\%$. Further details of the interim analysis and assessment of futility will be described in the statistical analysis plan (SAP), including the computation methods of conditional power such as those proposed by Lachin, 2005 {26904}.

8.10. Data Monitoring Committee

An independent DMC will monitor the safety and welfare of the study subjects as specified in the DMC charter. The DMC will meet at designated intervals to review accumulated data and may make recommendations regarding the study conduct. The DMC will also be responsible for reviewing the results of the interim analysis. Gilead retains final decision-making authority on all aspects of the study.

9. RESPONSIBILITIES

9.1. Investigator Responsibilities

9.1.1. Good Clinical Practice

The investigator will ensure that this study is conducted in accordance with the principles of the Declaration of Helsinki (as amended in Edinburgh, Tokyo, Venice, Hong Kong, and South Africa), International Conference on Harmonisation (ICH) guidelines, or with the laws and regulations of the country in which the research is conducted, whichever affords the greater protection to the study subject.

The investigator will ensure adherence to the basic principles of Good Clinical Practice, as outlined in 21 CFR 312, subpart D, “Responsibilities of Sponsors and Investigators,” 21 CFR, part 50, 1998, and 21 CFR, part 56, 1998.

The investigator and all applicable subinvestigators will comply with 21 CFR, Part 54, 1998, providing documentation of their financial interest or arrangements with Gilead, or proprietary interests in the investigational drug under study. This documentation must be provided prior to the investigator’s (and any subinvestigator’s) participation in the study. The investigator and subinvestigator agree to notify Gilead of any change in reportable interests during the study and for 1 year following completion of the study. Study completion is defined as the date when the last subject completes the protocol-defined activities.

9.1.2. Institutional Review Board (IRB)/Independent Ethics Committee (IEC) Review and Approval

The investigator (or sponsor as appropriate according to local regulations) will submit this protocol, informed consent form, and any accompanying material to be provided to the subject (such as advertisements, subject information sheets, or descriptions of the study used to obtain informed consent) to an Institutional Review Board (IRB)/Independent Ethics Committee (IEC). The investigator will not begin any study subject activities until approval from the IRB/IEC has been documented and provided in writing to the investigator.

Before implementation, the investigator will submit to and receive documented approval from the IRB/IEC any modifications made to the protocol or any accompanying material to be provided to the subject after initial approval, with the exception of those necessary to reduce immediate risk to study subjects.

9.1.3. Informed Consent

The investigator is responsible for obtaining written informed consent from each individual participating in this study after adequate explanation of the aims, methods, objectives, and potential hazards of the study and before undertaking any study-related procedures. The investigator must use the most current IRB or IEC approved consent form for documenting written informed consent. Each informed consent (or assent as applicable) will be

appropriately signed and dated by the subject or the subject's legally authorized representative and the person conducting the consent discussion, and also by an impartial witness if required by IRB/IEC or local requirements.

9.1.4. Confidentiality

The investigator must assure that subjects' anonymity will be strictly maintained and that their identities are protected from unauthorized parties. Only subject initials, date of birth, another unique identifier (as allowed by local law) and an identification code will be recorded on any form or biological sample submitted to the Sponsor IRB/IEC or laboratory. Laboratory specimens must be labeled in such a manner as to protect subject identity while allowing the results to be recorded to the proper subject. Refer to specific laboratory instructions. NOTE: The investigator must keep a screening log showing codes, names, and addresses for all subjects screened and for all subjects enrolled in the trial. Subject data will be processed in accordance with all applicable regulations.

The investigator agrees that all information received from Gilead, including but not limited to the investigator brochure, this protocol, CRF/eCRF, the IMP, and any other study information, remain the sole and exclusive property of Gilead during the conduct of the study and thereafter. This information is not to be disclosed to any third party (except employees or agents directly involved in the conduct of the study or as required by law) without prior written consent from Gilead. The investigator further agrees to take all reasonable precautions to prevent the disclosure by any employee or agent of the study site to any third party or otherwise into the public domain.

9.1.5. Study Files and Retention of Records

The investigator must maintain adequate and accurate records to enable the conduct of the study to be fully documented and the study data to be subsequently verified. These documents should be classified into at least the following two categories: (1) investigator's study file, and (2) subject clinical source documents.

The investigator's study file will contain the protocol/amendments, CRF and query forms, IRB/IEC and governmental approval with correspondence, informed consent, drug records, staff curriculum vitae and authorization forms, and other appropriate documents and correspondence.

The required source data should include sequential notes containing at least the following information for each subject:

- Subject identification (name, date of birth, gender);
- Documentation that subject meets eligibility criteria, ie, history, and confirmation of diagnosis (to support inclusion and exclusion criteria);
- Documentation of the reason(s) a consented subject is not enrolled
- Participation in study (including study number);

- Study discussed and date of informed consent;
- Dates of all visits;
- Documentation that protocol specific procedures were performed;
- Results of efficacy parameters, as required by the protocol;
- Start and end date (including dose regimen) of IMP, including dates of dispensing and return;
- Record of all AEs and other safety parameters (start and end date, and including causality and severity);
- Concomitant medication (including start and end date, dose if relevant; dose changes);
- Date of study completion and reason for early discontinuation, if it occurs.

All clinical study documents must be retained by the investigator until at least 2 years or according to local laws, whichever is longer, after the last approval of a marketing application in an ICH region (ie, United States, Europe, or Japan) and until there are no pending or planned marketing applications in an ICH region; or, if no application is filed or if the application is not approved for such indication, until 2 years after the investigation is discontinued and regulatory authorities have been notified. Investigators may be required to retain documents longer if specified by regulatory requirements, by local regulations, or by an agreement with Gilead. The investigator must notify Gilead before destroying any clinical study records.

Should the investigator wish to assign the study records to another party or move them to another location, Gilead must be notified in advance.

If the investigator cannot provide for this archiving requirement at the study site for any or all of the documents, special arrangements must be made between the investigator and Gilead to store these records securely away from the site so that they can be returned sealed to the investigator in case of an inspection. When source documents are required for the continued care of the subject, appropriate copies should be made for storage away from the site.

9.1.6. Case Report Forms

For each subject consented, an eCRFs will be completed by an authorized study staff member whose training for this function is documented according to study procedures. eCRFs should be completed on the day of the subject visit to enable the sponsor to perform central monitoring of safety data. Subsequent to data entry, a study monitor will perform source data verification within the EDC system. Original entries as well as any changes to data fields will be stored in the audit trail of the system. Prior to database lock (or any interim time points as described in the clinical data management plan), the investigator will use his/her log in credentials to confirm that the forms have been reviewed, and that the entries accurately reflect the information in the source documents. The eCRF capture the

data required per the protocol schedule of events and procedures. System-generated or manual queries will be issued to the investigative site staff as data discrepancies are identified by the monitor or internal Gilead staff, who routinely review the data for completeness, correctness, and consistency. The site coordinator is responsible for responding to the queries in a timely manner, within the system, either by confirming the data as correct or updating the original entry, and providing the reason for the update (e.g. data entry error). At the conclusion of the trial, Gilead will provide the site with a read-only archive copy of the data entered by that site. This archive must be stored in accordance with the records retention requirements outlined in Section 9.1.5.

9.1.7. Data Quality Control and Quality Assurance

To insure accurate, complete, and reliable data, the Sponsor or its representatives will do the following:

- Provide instructional material to the study sites, as appropriate.
- Instruct the investigators and study personnel on the protocol, the completion of the CRFs, and study procedures.
- Make periodic visits to the study site.
- Be available to consultation and stay in contact with the study site personnel by mail, email, telephone, and/or fax.
- Monitor the subject data recorded in the CRFs against source documents at the study site.
- Review and evaluate CRF data and use standard computer edits to detect errors in data collection.

9.1.8. Investigational Medicinal Product Accountability and Return

Gilead recommends that used and unused IMP supplies be returned to the shipping facility from which it came for eventual destruction. The study monitor will provide instructions for return. If return is not possible, the study monitor will evaluate each study center's IMP disposal procedures and provide appropriate instruction for destruction of unused IMP supplies. If the site has an appropriate standard operating procedure (SOP) for drug destruction as determined by Gilead QA, the site may destroy used (empty or partially empty) and unused IMP supplies in accordance with that site's approved SOP. A copy of the site's approved SOP will be obtained for central files.

If IMP is destroyed on site, the investigator must maintain accurate records for all IMP destroyed. Records must show the identification and quantity of each unit destroyed, the method of destruction, and the person who disposed of the IMP. Upon study completion, copies of the IMP accountability records must be filed at the site. Another copy will be returned to Gilead.

The study monitor will review IMP supplies and associated records at periodic intervals.

9.1.9. Inspections

The investigator will make available all source documents, eCRF data, and study related regulatory documents to appropriately qualified personnel from GSI or its representatives, to IRBs or IECs, or to regulatory authority or health authority inspectors (e.g. FDA, MHRA, EMA, etc.).

9.1.10. Protocol Compliance

The investigator is responsible for ensuring the study is conducted in accordance with the procedures and evaluations described in this protocol.

9.2. Sponsor Responsibilities

9.2.1. Protocol Modifications

Protocol modifications, except those intended to reduce immediate risk to study subjects, may be made only by Gilead. The investigator must submit all protocol modifications to the IRB/IEC in accordance with local requirements and receive documented IRB/IEC approval before modifications can be implemented.

9.2.2. Study Report and Publications

A clinical study report (CSR) will be prepared and provided to the regulatory agency. Gilead will ensure that the report meets the standards set out in the ICH Guideline for Structure and Content of Clinical Study Reports (ICH E3). Note that an abbreviated report may be prepared in certain cases.

Investigators in this study may communicate, orally present, or publish in scientific journals or other scholarly media only after the following conditions have been met:

- The results of the study in their entirety have been publicly disclosed by or with the consent of Gilead in an abstract, manuscript, or presentation form or the study has been completed at all study sites for at least 2 years
- The investigator will submit to Gilead any proposed publication or presentation along with the respective scientific journal or presentation forum at least 30 days before submission of the publication or presentation.
- No such communication, presentation, or publication will include Gilead's confidential information (see Section 9.1.4).
- The investigator will comply with Gilead's request to delete references to its confidential information (other than the study results) in any paper or presentation and agrees to withhold publication or presentation for an additional 60 days in order to obtain patent protection if deemed necessary.

9.3. Joint Investigator/Sponsor Responsibilities

9.3.1. Access to Information for Monitoring

In accordance with regulations and guidelines, the study monitor must have direct access to the investigator's source documentation in order to verify the accuracy of the data recorded in the CRF/eCRF.

The monitor is responsible for routine review of the CRF/eCRF at regular intervals throughout the study to verify adherence to the protocol and the completeness, consistency, and accuracy of the data being entered on them. The monitor should have access to any subject records needed to verify the entries on the CRF/eCRF. The investigator agrees to cooperate with the monitor to ensure that any problems detected through any type of monitoring (central, on site) are resolved.

9.3.2. Access to Information for Auditing or Inspections

Representatives of regulatory authorities or of Gilead may conduct inspections or audits of the clinical study. If the investigator is notified of an inspection by a regulatory authority the investigator agrees to notify the Gilead medical monitor immediately. The investigator agrees to provide to representatives of a regulatory agency or Gilead access to records, facilities, and personnel for the effective conduct of any inspection or audit.

9.3.3. Study Discontinuation

Both the sponsor and the investigator reserve the right to terminate the study at any time. Should this be necessary, both parties will arrange discontinuation procedures and notify the appropriate regulatory authority(ies), IRBs, and IECs. In terminating the study, Gilead and the investigator will assure that adequate consideration is given to the protection of the subjects' interests.

10. REFERENCES

- 11631** Dmitrienko A, Offen WW, Westfall PH. Gatekeeping strategies for clinical trials that do not require all primary effects to be significant. *Statist Med* 2003;22 (15):2387-400.
- 19902** American Academy of Pediatrics Committee on Infectious Diseases: Use of ribavirin in the treatment of respiratory syncytial virus infection. *Pediatrics* 1993;92 (3):501-4.
- 20061** Romero JR. Palivizumab prophylaxis of respiratory syncytial virus disease from 1998 to 2002: results from four years of palivizumab usage. *Pediatr Infect Dis J* 2003;22 (2 Suppl):S46-54.
- 20210** Borg I, Rohde G, Loseke S, Bittscheidt J, Schultze-Werninghaus G, Stephan V, et al. Evaluation of a quantitative real-time PCR for the detection of respiratory syncytial virus in pulmonary diseases. *Eur Respir J* 2003;21 (6):944-51.
- 20212** DeVincenzo JP, El Saleeby CM, Bush AJ. Respiratory syncytial virus load predicts disease severity in previously healthy infants. *J Infect Dis* 2005;191 (11):1861-8.
- 20213** DeVincenzo JP, Wilkinson T, Vaishnav A, Cehelsky J, Meyers R, Nochur S, et al. Viral load drives disease in humans experimentally infected with respiratory syncytial virus. *Am J Respir Crit Care Med* 2010;182 (10):1305-14.
- 20214** Duncan CB, Walsh EE, Peterson DR, Lee FE, Falsey AR. Risk factors for respiratory failure associated with respiratory syncytial virus infection in adults. *J Infect Dis* 2009;200 (8):1242-6.
- 20215** El Saleeby CM, Bush AJ, Harrison LM, Aitken JA, Devincenzo JP. Respiratory syncytial virus load, viral dynamics, and disease severity in previously healthy naturally infected children. *J Infect Dis* 2011;204 (7):996-1002.
- 20216** Falsey AR, Formica MA, Hennessey PA, Criddle MM, Sullender WM, Walsh EE. Detection of respiratory syncytial virus in adults with chronic obstructive pulmonary disease. *Am J Respir Crit Care Med* 2006;173 (6):639-43.
- 20217** Falsey AR, Hennessey PA, Formica MA, Cox C, Walsh EE. Respiratory syncytial virus infection in elderly and high-risk adults. *N Engl J Med* 2005;352 (17):1749-59.
- 20221** Johnson JE, Gonzales RA, Olson SJ, Wright PF, Graham BS. The histopathology of fatal untreated human respiratory syncytial virus infection. *Mod Pathol* 2007;20 (1):108-19.

- 20222** Nair H, Nokes DJ, Gessner BD, Dherani M, Madhi SA, Singleton RJ, et al. Global burden of acute lower respiratory infections due to respiratory syncytial virus in young children: a systematic review and meta-analysis. *Lancet* 2010;375 (9725):1545-55.
- 20224** Peebles RS, Jr., Graham BS. Pathogenesis of respiratory syncytial virus infection in the murine model. *Proc Am Thorac Soc* 2005;2 (2):110-5.
- 20227** Stockman LJ, Curns AT, Anderson LJ, Fischer-Langley G. Respiratory Syncytial Virus-associated Hospitalizations Among Infants and Young Children in the United States, 1997-2006. *Pediatr Infect Dis J* 2012;31 (1):5-9.
- 20232** Joffe S, Ray GT, Escobar GJ, Black SB, Lieu TA. Cost-effectiveness of respiratory syncytial virus prophylaxis among preterm infants. *Pediatrics* 1999;104 (3 Pt 1):419-27.
- 20233** Nichols WG, Gooley T, Boeckh M. Community-acquired respiratory syncytial virus and parainfluenza virus infections after hematopoietic stem cell transplantation: the Fred Hutchinson Cancer Research Center experience. *Biol Blood Marrow Transplant* 2001;7 Suppl:11S-5S.
- 20903** DeVincenzo J, Lambkin-Williams R, Wilkinson T, Cehelsky J, Nochur S, Walsh E, et al. A randomized, double-blind, placebo-controlled study of an RNAi-based therapy directed against respiratory syncytial virus. *Proc Natl Acad Sci U S A* 2010;107 (19):8800-5.
- 26901** Widmer K, Zhu Y, Williams JV, Griffin MR, Edwards KM, Talbot HK. Rates of hospitalizations for respiratory syncytial virus, human metapneumovirus, and influenza virus in older adults. *J Infect Dis* 2012;206 (1):56-62.
- 26902** Walsh EE, Peterson DR, Kalkanoglu AE, Lee FE, Falsey AR. Viral shedding and immune responses to respiratory syncytial virus infection in older adults. *J Infect Dis* 2013;207 (9):1424-32.
- 26903** Kaye M, Skidmore S, Osman H, Weinbren M, Warren R. Surveillance of respiratory virus infections in adult hospital admissions using rapid methods. *Epidemiol Infect* 2006;134 (4):792-8.
- 26904** Lachin JM. A review of methods for futility stopping based on conditional power. *Stat Med* 2005;24 (18):2747-64.
- 26905** Lee N, Lui GC, Wong KT, Li TC, Tse EC, Chan JY, et al. High morbidity and mortality in adults hospitalized for respiratory syncytial virus infections. *Clin Infect Dis* 2013;57 (8):1069-77.

- 26906** Lieberman D, Shimoni A, Shemer-Avni Y, Keren-Naos A, Shtainberg R. Respiratory viruses in adults with community-acquired pneumonia. *Chest* 2010;138 (4):811-6.
- 26907** Luchsinger V, Piedra PA, Ruiz M, Zunino E, Martinez MA, Machado C, et al. Role of neutralizing antibodies in adults with community-acquired pneumonia by respiratory syncytial virus. *Clin Infect Dis* 2012;54 (7):905-12.
- 26908** Shah JN, Chemaly RF. Management of RSV infections in adult recipients of hematopoietic stem cell transplantation. *Blood* 2011;117 (10):2755-63.
- 26909** Takahashi K, Suzuki M, Minh le N, Anh NH, Huong LT, Son TV, et al. The incidence and aetiology of hospitalised community-acquired pneumonia among Vietnamese adults: a prospective surveillance in Central Vietnam. *BMC Infect Dis* 2013;13:296.

11. APPENDICES

- Appendix 1. Investigator Signature Page
- Appendix 2. Study Procedures Table
- Appendix 3. Management of Clinical and Laboratory Adverse Events
- Appendix 4. GSI Grading Scale for Severity of Adverse Events and
Laboratory Abnormalities
- Appendix 5. Pregnancy Precautions, Definition for Female of Childbearing
Potential, and Contraceptive Requirements

Appendix 1. Investigator Signature Page

**GILEAD SCIENCES, INC.
199 E BLAINE ST
SEATTLE, WA 98102 USA**

STUDY ACKNOWLEDGEMENT

**A Phase 2b, Randomized, Double-Blind, Placebo-Controlled Multi-Center Study
Evaluating Antiviral Effects, Pharmacokinetics, Safety, and Tolerability of GS-5806 in
Hospitalized Adults with Respiratory Syncytial Virus (RSV) Infection**

GS-US-218-1227 Original Protocol, 10 November 2013

This protocol has been approved by Gilead Sciences, Inc. The following signature documents this approval.

Jason Chien, MD, MS

Name (Printed)



PPD

November 10, 2013

Date

INVESTIGATOR STATEMENT

I have read the protocol, including all appendices, and I agree that it contains all necessary details for me and my staff to conduct this study as described. I will conduct this study as outlined herein and will make a reasonable effort to complete the study within the time designated.

I will provide all study personnel under my supervision copies of the protocol and access to all information provided by Gilead Sciences, Inc. I will discuss this material with them to ensure that they are fully informed about the drugs and the study.

Principal Investigator Name (Printed)

Signature

Date

Site Number

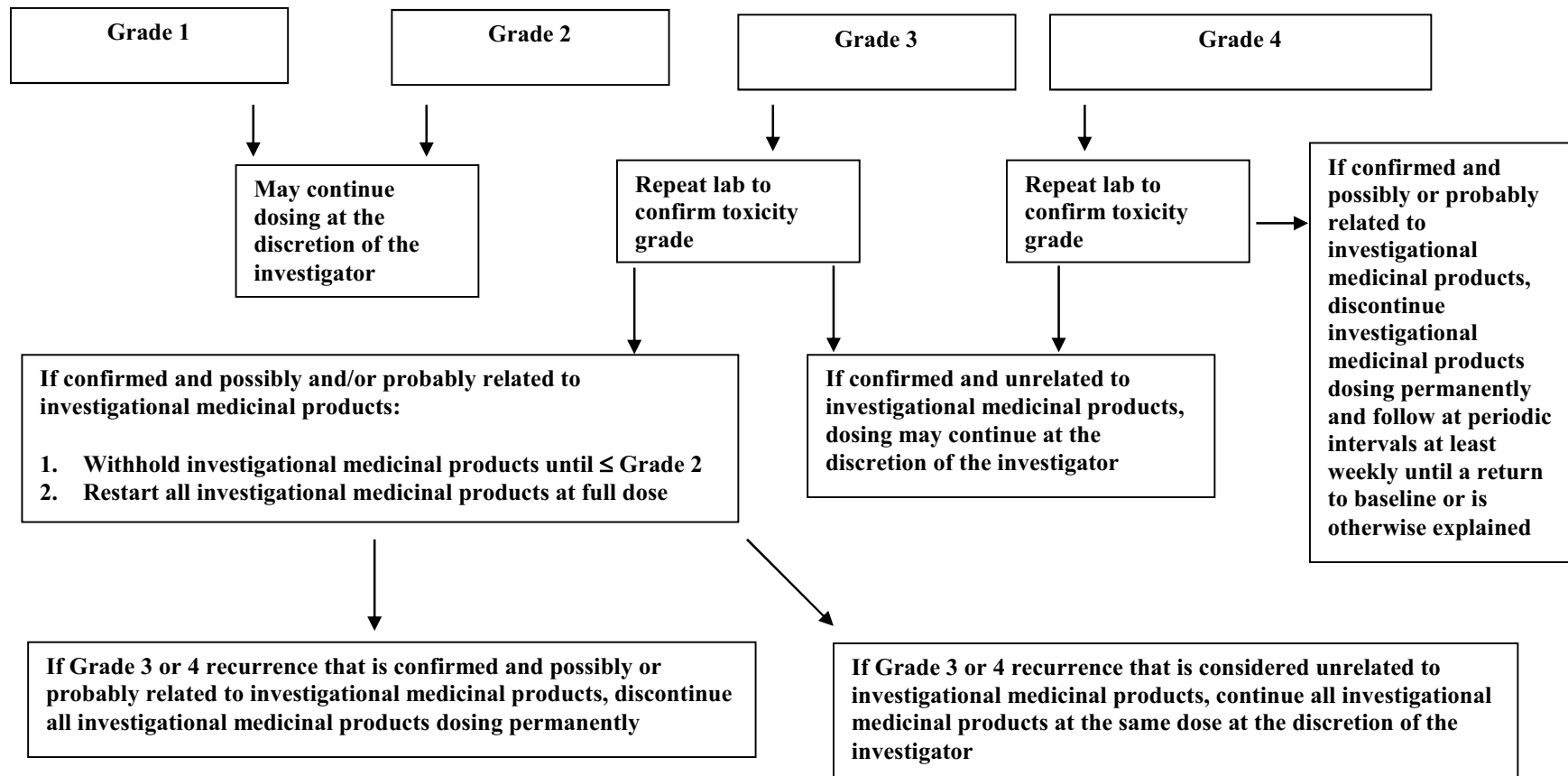
Appendix 2. Study Procedures Table

	Day -1 Screening^a	Day 1 Baseline	Days 2	Day 3	Day 5	Day 7	Day 14 (+/- 1 day)	Day 28 (+ 7 days)
Written Informed Consent	x ^{b, c}							
Nasal Sampling for RSV testing	x ^d	x	x	x	x	x	x	
Nasal Sampling for Influenza Testing	x							
Vital Signs / O2 saturation	x	x ^e	x	x	x	x	x	
Medical History and Demographics		x						
12-lead ECG		x ^f						
Hematology	x ^g	x		x	x		x	
Serum Chemistry	x ^g	x		x	x		x	
PK blood draw		x ^h	x	x				
Biomarker blood draw		x ⁱ			x			
Pregnancy Test	x ^j						x ^k	
Frailty Index		x						
EQ-5D		x				x	x	x
FLU-PRO		x	x	x	x	x	x	
Clinical Symptom Score		x	x	x	x	x	x	

	Day -1 Screening^a	Day 1 Baseline	Days 2	Day 3	Day 5	Day 7	Day 14 (+/- 1 day)	Day 28 (+ 7 days)
Healthcare Utilization Assessment						x	x	x
Drug Dosing		x						
Adverse Events	x	x	x	x	x	x	x	x
Concomitant Medications	x	x	x	x	x	x	x	x

- a Baseline (Day 1) visit to occur within 28 hours of screening. Day 1 (Baseline) through Day 7 will occur 24 hours +/- 4 hours apart, with no procedures occurring on Days 4 and 6.
- b Patients anticipated to be eligible for this study will be consented for RSV testing of nasal samples.
- c Patients who are RSV positive will be approached to consent for the screening and treatment phase of the study.
- d Performed at the local laboratory at screening. All other samples tested at the central lab.
- e To include height and weight at Day 1. At Day 1 vital signs will be obtained 5-10 minutes pre-dose and at 15 and 30 minutes post-dose.
- f At Day 1 an ECG will be obtained prior to dosing (unless already available from current admission). A T_{max} ECG will be obtained approximately 2 hours +/- 30 minutes post-dose.
- g If no recent laboratory values are available from current hospitalization.
- h Taken 2 hours +/- 30 minutes post-dose.
- i To be drawn pre-dose
- j Urine pregnancy test will be performed at Screening in women unable to confirm menopause, hysterectomy and/or bilateral oophorectomy.
- k Serum pregnancy test will be performed on Day 14 in women unable to confirm menopause, hysterectomy, and/or bilateral oophorectomy.

Appendix 3. Management of Clinical and Laboratory Adverse Events



Appendix 4. GSI Grading Scale for Severity of Adverse Events and Laboratory Abnormalities

Version: 18June2012

HEMATOLOGY				
	Grade 1	Grade 2	Grade 3	Grade 4
Hemoglobin				
HIV POSITIVE Adult and Pediatric ≥ 57 Days	8.5 to 10.0 g/dL 85 to 100 g/L	7.5 to < 8.5 g/dL 75 to < 85 g/L	6.5 to < 7.5 g/dL 65 to < 75 g/L	< 6.5 g/dL < 65 g/L
HIV NEGATIVE Adult and Pediatric ≥ 57 Days	10.0 to 10.9 g/dL 100 to 109 g/L OR Any decrease from Baseline 2.5 to < 3.5 g/dL 25 to < 35 g/L	9.0 to < 10.0 g/dL 90 to < 100 g/L OR Any decrease from Baseline 3.5 to < 4.5 g/dL 35 to < 45 g/L	7.0 to < 9.0 g/dL 70 to < 90 g/L OR Any decrease from Baseline ≥ 4.5 g/dL ≥ 45 g/L	< 7.0 g/dL < 70 g/L
Infant, 36–56 Days (HIV POSITIVE OR NEGATIVE)	8.5 to 9.4 g/dL 85 to 94 g/L	7.0 to < 8.5 g/dL 70 to < 85 g/L	6.0 to < 7.0 g/dL 60 to < 70 g/L	< 6.0 g/dL < 60 g/L
Infant, 22–35 Days (HIV POSITIVE OR NEGATIVE)	9.5 to 10.5 g/dL 95 to 105 g/L	8.0 to < 9.5 g/dL 80 to < 95 g/L	7.0 to < 8.0 g/dL 70 to < 80 g/L	< 7.0 g/dL < 70 g/L
Infant, 1–21 Days (HIV POSITIVE OR NEGATIVE)	12.0 to 13.0 g/dL 120 to 130 g/L	10.0 to < 12.0 g/dL 100 to < 120 g/L	9.0 to < 10.0 g/dL 90 to < 100 g/L	< 9.0 g/dL < 90 g/L

HEMATOLOGY				
	Grade 1	Grade 2	Grade 3	Grade 4
Absolute Neutrophil Count (ANC)	1000 to 1300/mm ³	750 to < 1000/mm ³	500 to < 750/mm ³	< 500/mm ³
Adult and Pediatric, > 7 Days	1.00 to 1.30 GI/L	0.75 to < 1.00 GI/L	0.50 to < 0.75 GI/L	< 0.50 GI/L
Infant, 2 – ≤ 7 Days	1250 to 1500/mm ³	1000 to < 1250/mm ³	750 to < 1000/mm ³	< 750/mm ³
	1.25 to 1.50 GI/L	1.00 to < 1.25 GI/L	0.75 to < 1.00 GI/L	< 0.75 GI/L
Infant, 1 Day	4000 to 5000/mm ³	3000 to < 4000/mm ³	1500 to < 3000/mm ³	< 1500/mm ³
	4.00 to 5.00 GI/L	3.00 to < 4.00 GI/L	1.50 to < 3.00 GI/L	< 1.50 GI/L
Absolute CD4+ Count HIV NEGATIVE ONLY				
Adult and Pediatric > 13 Years	300 to 400/mm ³ 300 to 400/μL	200 to < 300/mm ³ 200 to < 300/μL	100 to < 200/mm ³ 100 to < 200/μL	< 100/mm ³ < 100/μL
Absolute Lymphocyte Count HIV NEGATIVE ONLY				
Adult and Pediatric > 13 Years	600 to 650/mm ³ 0.60 to 0.65 GI/L	500 to < 600/mm ³ 0.50 to < 0.60 GI/L	350 to < 500/mm ³ 0.35 to < 0.50 GI/L	< 350/mm ³ < 0.35 GI/L
Platelets	100,000 to < 125,000/mm ³ 100 to < 125 GI/L	50,000 to < 100,000/mm ³ 50 to < 100 GI/L	25,000 to < 50,000/mm ³ 25 to < 50 GI/L	< 25,000/mm ³ < 25 GI/L
WBCs	2000/mm ³ to 2500/mm ³ 2.00 GI/L to 2.50 GI/L	1,500 to < 2,000/mm ³ 1.50 to < 2.00 GI/L	1000 to < 1,500/mm ³ 1.00 to < 1.50 GI/L	< 1000/mm ³ < 1.00 GI/L
Hypofibrinogenemia	100 to 200 mg/dL 1.00 to 2.00 g/L	75 to < 100 mg/dL 0.75 to < 1.00 g/L	50 to < 75 mg/dL 0.50 to < 0.75 g/L	< 50 mg/dL < 0.50 g/L

HEMATOLOGY				
	Grade 1	Grade 2	Grade 3	Grade 4
Hyperfibrinogenemia	> ULN to 600 mg/dL > ULN to 6.0 g/L	> 600 mg/dL > 6.0 g/L	— —	— —
Fibrin Split Product	20 to 40 µg/mL 20 to 40 mg/L	> 40 to 50 µg/mL > 40 to 50 mg/L	> 50 to 60 µg/mL > 50 to 60 mg/L	> 60 µg/mL > 60 mg/L
Prothrombin Time (PT)	> 1.00 to 1.25 × ULN	> 1.25 to 1.50 × ULN	> 1.50 to 3.00 × ULN	> 3.00 × ULN
International Normalized Ratio of prothrombin time (INR)	1.1 to 1.5 x ULN	>1.5 to 2.0 x ULN	>2.0 to 3.0 x ULN	>3.0 x ULN
Activated Partial Thromboplastin Time (APTT)	> 1.00 to 1.66 × ULN	> 1.66 to 2.33 × ULN	> 2.33 to 3.00 × ULN	> 3.00 × ULN
Methemoglobin	5.0 to 10.0%	> 10.0 to 15.0%	> 15.0 to 20.0%	> 20.0%

CHEMISTRY				
	Grade 1	Grade 2	Grade 3	Grade 4
Hyponatremia	130 to <LLN mEq/L 130 to <LLN mmol/L	125 to < 130 mEq/L 125 to < 130 mmol/L	121 to < 125 mEq/L 121 to < 125 mmol/L	< 121 mEq/L < 121 mmol/L
Hypernatremia	146 to 150 mEq/L 146 to 150 mmol/L	> 150 to 154 mEq/L > 150 to 154 mmol/L	> 154 to 159 mEq/L > 154 to 159 mmol/L	> 159 mEq/L > 159 mmol/L
Hypokalemia	3.0 to 3.4 mEq/L 3.0 to 3.4 mmol/L	2.5 to < 3.0 mEq/L 2.5 to < 3.0 mmol/L	2.0 to < 2.5 mEq/L 2.0 to < 2.5 mmol/L	< 2.0 mEq/L < 2.0 mmol/L
Hyperkalemia	5.6 to 6.0 mEq/L 5.6 to 6.0 mmol/L	> 6.0 to 6.5 mEq/L > 6.0 to 6.5 mmol/L	> 6.5 to 7.0 mEq/L > 6.5 to 7.0 mmol/L	> 7.0 mEq/L > 7.0 mmol/L
Hypoglycemia Adult and Pediatric ≥ 1 Month Infant, < 1 Month	55 to 64 mg/dL 3.03 to 3.58 mmol/L 50 to 54 mg/dL 2.8 to 3.0 mmol/L	40 to < 55 mg/dL 2.20 to < 3.03 mmol/L 40 to < 50 mg/dL 2.2 to < 2.8 mmol/L	30 to < 40 mg/dL 1.64 to < 2.20 mmol/L 30 to < 40 mg/dL 1.7 to < 2.2 mmol/L	< 30 mg/dL < 1.64 mmol/L < 30 mg/dL < 1.7 mmol/L
Hyperglycemia, Nonfasting	116 to 160 mg/dL 6.42 to 8.91 mmol/L	> 160 to 250 mg/dL > 8.91 to 13.90 mmol/L	> 250 to 500 mg/dL > 13.90 to 27.79 mmol/L	> 500 mg/dL > 27.79 mmol/L
Hyperglycemia, Fasting	110 to 125 mg/dL 6.08 to 6.96 mmol/L	>125 to 250 mg/dL >6.96 to 13.90 mmol/L	>250 to 500 mg/dL >13.90 to 27.79 mmol/L	>500 mg/dL >27.79 mmol/L
Hypocalcemia (corrected for albumin if appropriate*) Adult and Pediatric ≥ 7 Days Infant, < 7 Days	7.8 to 8.4 mg/dL 1.94 to 2.10 mmol/L 6.5 to 7.5 mg/dL 1.61 to 1.88 mmol/L	7.0 to < 7.8 mg/dL 1.74 to < 1.94 mmol/L 6.0 to < 6.5 mg/dL 1.49 to < 1.61 mmol/L	6.1 to < 7.0 mg/dL 1.51 to < 1.74 mmol/L 5.5 to < 6.0 mg/dL 1.36 to < 1.49 mmol/L	< 6.1 mg/dL < 1.51 mmol/L < 5.5 mg/dL < 1.36 mmol/L

CHEMISTRY				
	Grade 1	Grade 2	Grade 3	Grade 4
Hypercalcemia (corrected for albumin if appropriate*) Adult and Pediatric ≥ 7 Days Infant, < 7 Days	>ULN to 11.5 mg/dL >ULN to 2.88 mmol/L 11.5 to 12.4 mg/dL 2.86 to 3.10 mmol/L	> 11.5 to 12.5 mg/dL > 2.88 to 3.13 mmol/L > 12.4 to 12.9 mg/dL > 3.10 to 3.23 mmol/L	> 12.5 to 13.5 mg/dL > 3.13 to 3.38 mmol/L > 12.9 to 13.5 mg/dL > 3.23 to 3.38 mmol/L	> 13.5 mg/dL > 3.38 mmol/L > 13.5 mg/dL > 3.38 mmol/L
Hypocalcemia (ionized)	3.0 mg/dL to < LLN 0.74 mmol/L to < LLN	2.5 to < 3.0 mg/dL 0.62 to < 0.74 mmol/L	2.0 to < 2.5 mg/dL 0.49 to < 0.62 mmol/L	< 2.0 mg/dL < 0.49 mmol/L
Hypercalcemia (ionized)	> ULN to 6.0 mg/dL > ULN to 1.50 mmol/L	> 6.0 to 6.5 mg/dL > 1.50 to 1.63 mmol/L	> 6.5 to 7.0 mg/dL > 1.63 to 1.75 mmol/L	> 7.0 mg/dL > 1.75 mmol/L
Hypomagnesemia	1.40 to <LLN mg/dL 1.2 to <LLN mEq/L 0.58 to <LLN mmol/L	1.04 to < 1.40 mg/dL 0.9 to < 1.2 mEq/L 0.43 to < 0.58 mmol/L	0.67 to < 1.04 mg/dL 0.6 to < 0.9 mEq/L 0.28 to < 0.43 mmol/L	< 0.67 mg/dL < 0.6 mEq/L < 0.28 mmol/L
Hypophosphatemia Adult and Pediatric > 14 Years Pediatric 1 Year–14 Years Pediatric < 1 Year	2.0 to < LLN mg/dL 0.63 to < LLN mmol/L 3.0 to 3.5 mg/dL 0.96 to 1.12 mmol/L 3.5 to 4.5 mg/dL 1.12 to 1.46 mmol/L	1.5 to < 2.0 mg/dL 0.47 to < 0.63 mmol/L 2.5 to < 3.0 mg/dL 0.80 to < 0.96 mmol/L 2.5 to < 3.5 mg/dL 0.80 to < 1.12 mmol/L	1.0 to < 1.5 mg/dL 0.31 to < 0.47 mmol/L 1.5 to < 2.5 mg/dL 0.47 to < 0.80 mmol/L 1.5 to < 2.5 mg/dL 0.47 to < 0.80 mmol/L	< 1.0 mg/dL < 0.31 mmol/L < 1.5 mg/dL < 0.47 mmol/L < 1.5 mg/dL < 0.47 mmol/L

CHEMISTRY				
	Grade 1	Grade 2	Grade 3	Grade 4
Hyperbilirubinemia Adult and Pediatric > 14 Days	> 1.0 to 1.5 × ULN	> 1.5 to 2.5 × ULN	> 2.5 to 5.0 × ULN	> 5.0 × ULN
Infant, ≤ 14 Days (non-hemolytic)	NA	20.0 to 25.0 mg/dL 342 to 428 μmol/L	> 25.0 to 30.0 mg/dL > 428 to 513 μmol/L	> 30.0 mg/dL > 513 μmol/L
Infant, ≤ 14 Days (hemolytic)	NA	NA	20.0 to 25.0 mg/dL 342 to 428 μmol/L	> 25.0 mg/dL > 428 μmol/L
Blood Urea Nitrogen	1.25 to 2.50 × ULN	> 2.50 to 5.00 × ULN	> 5.00 to 10.00 × ULN	> 10.00 × ULN
Hyperuricemia	>ULN to 10.0 mg/dL >ULN to 597 μmol/L	> 10.0 to 12.0 mg/dL > 597 to 716 μmol/L	> 12.0 to 15.0 mg/dL > 716 to 895 μmol/L	> 15.0 mg/dL > 895 μmol/L
Hypouricemia	1.5 mg/dL to < LLN 87 μmol/L to < LLN	1.0 to < 1.5 mg/dL 57 to < 87 μmol/L	0.5 to < 1.0 mg/dL 27 to < 57 μmol/L	< 0.5 mg/dL < 27 μmol/L
Creatinine	> 1.50 to 2.00 mg/dL > 133 to 177 μmol/L	> 2.00 to 3.00 mg/dL > 177 to 265 μmol/L	> 3.00 to 6.00 mg/dL > 265 to 530 μmol/L	> 6.00 mg/dL > 530 μmol/L
Bicarbonate	16.0 mEq/L to < LLN 16.0 mmol/L to < LLN	11.0 to < 16.0 mEq/L 11.0 to < 16.0 mmol/L	8.0 to < 11.0 mEq/L 8.0 to < 11.0 mmol/L	< 8.0 mEq/L < 8.0 mmol/L
Triglycerides (Fasting)	NA	500 to 750 mg/dL 5.64–8.47 mmol/L	> 750 to 1200 mg/dL > 8.47–13.55 mmol/L	> 1200 mg/dL > 13.55 mmol/L

CHEMISTRY				
	Grade 1	Grade 2	Grade 3	Grade 4
LDL (Fasting)	130 to 160 mg/dL 3.35 to 4.15 mmol/L	>160 to 190 mg/dL >4.15 to 4.92 mmol/L	> 190 mg/dL >4.92 mmol/L	NA
Pediatric >2 to <18 years	110 to 130 mg/dL 2.84 to 3.37 mmol/L	>130 to 190 mg/dL >3.37 to 4.92 mmol/L	> 190 mg/dL >4.92 mmol/L	NA
Hypercholesterolemia (Fasting)	200 to 239 mg/dL 5.16 to 6.19 mmol/L	> 239 to 300 mg/dL > 6.19 to 7.77 mmol/L	> 300 mg/dL > 7.77 mmol/L	NA
Pediatric < 18 Years	170 to 199 mg/dL 4.39 to 5.15 mmol/L	> 199 to 300 mg/dL > 5.15 to 7.77 mmol/L	> 300 mg/dL > 7.77 mmol/L	NA
Creatine Kinase	3.0 to < 6.0 × ULN	6.0 to < 10.0 × ULN	10.0 to < 20.0 × ULN	≥ 20.0 × ULN

*Calcium should be corrected for albumin if albumin is < 4.0 g/dL

ENZYMES				
	Grade 1	Grade 2	Grade 3	Grade 4
AST (SGOT)	1.25 to 2.50 × ULN	> 2.50 to 5.00 × ULN	> 5.00 to 10.00 × ULN	> 10.00 × ULN
ALT (SGPT)	1.25 to 2.50 × ULN	> 2.50 to 5.00 × ULN	> 5.00 to 10.00 × ULN	> 10.00 × ULN
GGT	1.25 to 2.50 × ULN	> 2.50 to 5.00 × ULN	> 5.00 to 10.00 × ULN	> 10.00 × ULN
Alkaline Phosphatase	1.25 to 2.50 × ULN	> 2.50 to 5.00 × ULN	> 5.00 to 10.00 × ULN	> 10.00 × ULN
Total Amylase	> 1.0 to 1.5 × ULN	> 1.5 to 2.0 × ULN	> 2.0 to 5.0 × ULN	> 5.0 × ULN
Pancreatic Amylase	> 1.0 to 1.5 × ULN	> 1.5 to 2.0 × ULN	> 2.0 to 5.0 × ULN	> 5.0 × ULN
Lipase	> 1.0 to 1.5 × ULN	> 1.5 to 3.0 × ULN	> 3.0 to 5.0 × ULN	> 5.0 × ULN
Albumin	3.0 g/dL to < LLN 30 g/L to < LLN	2.0 to < 3.0 g/dL 20 to < 30 g/L	< 2.0 g/dL < 20 g/L	NA

URINALYSIS				
	Grade 1	Grade 2	Grade 3	Grade 4
Hematuria (Dipstick)	1+	2+	3-4+	NA
Hematuria (Quantitative) See Note below				
Females	>ULN - 10 RBC/HPF	> 10-75 RBC/HPF	> 75 RBC/HPF	NA
Males	6-10 RBC/HPF	> 10-75 RBC/HPF	> 75 RBC/HPF	NA
Proteinuria (Dipstick)	1+	2-3+	4+	NA
Proteinuria, 24 Hour Collection				
Adult and Pediatric ≥ 10 Years	200 to 999 mg/24 h	>999 to 1999 mg/24 h	>1999 to 3500 mg/24 h	> 3500 mg/24 h
Pediatric > 3 Mo to < 10 Years	201 to 499 mg/m ² /24 h	>499 to 799 mg/m ² /24 h	>799 to 1000 mg/m ² /24 h	> 1000 mg/ m ² /24 h
Glycosuria (Dipstick)	1+	2-3+	4+	NA

Notes:

- Toxicity grades for Quantitative and Dipstick Hematuria will be assigned by Covance Laboratory, however for other laboratories, toxicity grades will only be assigned to Dipstick Hematuria.
- With the exception of lipid tests, any graded laboratory test with a result that is between the LLN and ULN should be assigned Grade 0.
- If the severity of a clinical AE could fall under either one of two grades (e.g., the severity of an AE could be either Grade 2 or Grade 3), select the higher of the two grades for the AE.

CARDIOVASCULAR				
	Grade 1	Grade 2	Grade 3	Grade 4
Cardiac Arrhythmia (general) (By ECG or physical exam)	Asymptomatic AND No intervention indicated	Asymptomatic AND Non-urgent medical intervention indicated	Symptomatic, non-life-threatening AND Non-urgent medical intervention indicated	Life-threatening arrhythmia OR Urgent intervention indicated
Cardiac-ischemia/Infarction	NA	NA	Symptomatic ischemia (stable angina) OR Testing consistent with ischemia	Unstable angina OR Acute myocardial infarction
Hemorrhage (significant acute blood loss)	NA	Symptomatic AND No transfusion indicated	Symptomatic AND Transfusion of ≤ 2 units packed RBCs (for children ≤ 10 cc/kg) indicated	Life-threatening hypotension OR Transfusion of > 2 units packed RBCs indicated (for children ≤ 10 cc/kg) indicated
Hypertension (with repeat testing at same visit)	140–159 mmHg systolic OR 90–99 mmHg diastolic	> 159–179 mmHg systolic OR > 99–109 mmHg diastolic	> 179 mmHg systolic OR > 109 mmHg diastolic	Life-threatening consequences (eg, malignant hypertension) OR Hospitalization (other than ER visit) indicated
Pediatric ≤ 17 Years (with repeat testing at same visit)	NA	91st–94th percentile adjusted for age, height, and gender (systolic and/or diastolic)	≥ 95th percentile adjusted for age, height, and gender (systolic and/or diastolic)	Life-threatening consequences (eg, malignant hypertension) OR Hospitalization indicated (other than emergency room visit)
Hypotension	NA	Symptomatic, corrected with oral fluid replacement	Symptomatic, IV fluids indicated	Shock requiring use of vasopressors or mechanical assistance to maintain blood pressure
Pericardial Effusion	Asymptomatic, small effusion requiring no intervention	Asymptomatic, moderate or larger effusion requiring no intervention	Effusion with non-life-threatening physiologic consequences OR Effusion with nonurgent intervention indicated	Life-threatening consequences (eg, tamponade) OR Urgent intervention indicated

CARDIOVASCULAR				
	Grade 1	Grade 2	Grade 3	Grade 4
Prolonged PR Interval Pediatric ≤ 16 Years	PR interval 0.21 to 0.25 sec 1st degree AV block (PR > normal for age and rate)	PR interval > 0.25 sec Type I 2nd degree AV block	Type II 2nd degree AV block OR Ventricular pause > 3.0 sec Type II 2nd degree AV block	Complete AV block Complete AV block
Prolonged QTc Pediatric ≤ 16 Years	Asymptomatic, QTc interval 0.45 to 0.47 sec OR Increase interval < 0.03 sec above baseline Asymptomatic, QTc interval 0.450 to 0.464 sec	Asymptomatic, QTc interval 0.48 to 0.49 sec OR Increase in interval 0.03 to 0.05 sec above baseline Asymptomatic, QTc interval 0.465 to 0.479 sec	Asymptomatic, QTc interval ≥ 0.50 sec OR Increase in interval ≥ 0.06 sec above baseline Asymptomatic, QTc interval ≥ 0.480 sec	Life-threatening consequences, eg, Torsade de pointes or other associated serious ventricular dysrhythmia Life-threatening consequences, eg, Torsade de pointes or other associated serious ventricular dysrhythmia
Thrombosis/Embolism	NA	Deep vein thrombosis AND No intervention indicated (eg, anticoagulation, lysis filter, invasive procedure)	Deep vein thrombosis AND Intervention indicated (eg, anticoagulation, lysis filter, invasive procedure)	Embolic event (eg, pulmonary embolism, life-threatening thrombus)
Vasovagal Episode (associated with a procedure of any kind)	Present without loss of consciousness	Present with transient loss of consciousness	NA	NA
Ventricular Dysfunction (congestive heart failure, CHF)	NA	Asymptomatic diagnostic finding AND intervention indicated	New onset with symptoms OR Worsening symptomatic CHF	Life-threatening CHF

RESPIRATORY				
	Grade 1	Grade 2	Grade 3	Grade 4
Bronchospasm (acute)	FEV1 or peak flow reduced to 70% to 80%	FEV1 or peak flow 50% to 69%	FEV1 or peak flow 25% to 49%	Cyanosis OR FEV1 or peak flow < 25% OR Intubation
Dyspnea or Respiratory Distress	Dyspnea on exertion with no or minimal interference with usual social & functional activities	Dyspnea on exertion causing greater than minimal interference with usual social & functional activities	Dyspnea at rest causing inability to perform usual social & functional activities	Respiratory failure with ventilatory support indicated
Pediatric < 14 Years	Wheezing OR minimal increase in respiratory rate for age	Nasal flaring OR Intercostal retractions OR Pulse oximetry 90% to 95%	Dyspnea at rest causing inability to perform usual social & functional activities OR Pulse oximetry < 90%	Respiratory failure with ventilatory support indicated

OCULAR/VISUAL				
	Grade 1	Grade 2	Grade 3	Grade 4
Uveitis	Asymptomatic but detectable on exam	Symptomatic anterior uveitis OR Medical intervention indicated	Posterior or pan-uveitis OR Operative intervention indicated	Disabling visual loss in affected eye(s)
Visual Changes (from baseline)	Visual changes causing no or minimal interference with usual social & functional activities	Visual changes causing greater than minimal interference with usual social & functional activities	Visual changes causing inability to perform usual social & functional activities	Disabling visual loss in affected eye(s)

SKIN				
	Grade 1	Grade 2	Grade 3	Grade 4
Alopecia	Thinning detectable by study participant or caregiver (for disabled adults)	Thinning or patchy hair loss detectable by health care provider	Complete hair loss	NA
Cutaneous Reaction – Rash	Localized macular rash	Diffuse macular, maculopapular, or morbilliform rash OR Target lesions	Diffuse macular, maculopapular, or morbilliform rash with vesicles or limited number of bullae OR Superficial ulcerations of mucous membrane limited to one site	Extensive or generalized bullous lesions OR Stevens-Johnson syndrome OR Ulceration of mucous membrane involving two or more distinct mucosal sites OR Toxic epidermal necrolysis (TEN)
Hyperpigmentation	Slight or localized	Marked or generalized	NA	NA
Hypopigmentation	Slight or localized	Marked or generalized	NA	NA
Pruritis (itching – no skin lesions) (See also Injection Site Reactions: Pruritis associated with injection)	Itching causing no or minimal interference with usual social & functional activities	Itching causing greater than minimal interference with usual social & functional activities	Itching causing inability to perform usual social & functional activities	NA

GASTROINTESTINAL				
	Grade 1	Grade 2	Grade 3	Grade 4
Anorexia	Loss of appetite without decreased oral intake	Loss of appetite associated with decreased oral intake without significant weight loss	Loss of appetite associated with significant weight loss	Life-threatening consequences OR Aggressive intervention indicated [eg, tube feeding or total parenteral nutrition]
Ascites	Asymptomatic	Symptomatic AND Intervention indicated (eg, diuretics or therapeutic paracentesis)	Symptomatic despite intervention	Life-threatening consequences
Cholecystitis	NA	Symptomatic AND Medical intervention indicated	Radiologic, endoscopic, or operative intervention indicated	Life-threatening consequences (eg, sepsis or perforation)
Constipation	NA	Persistent constipation requiring regular use of dietary modifications, laxatives, or enemas	Obstipation with manual evacuation indicated	Life-threatening consequences (eg, obstruction)
Diarrhea Adult and Pediatric ≥ 1 Year	Transient or intermittent episodes of unformed stools OR Increase of ≤ 3 stools over baseline/24 hr	Persistent episodes of unformed to watery stools OR Increase of 4–6 stools over baseline per 24 hrs.	Bloody diarrhea OR Increase of ≥ 7 stools per 24-hour period OR IV fluid replacement indicated	Life-threatening consequences (eg, hypotensive shock)
Pediatric < 1 Year	Liquid stools (more unformed than usual) but usual number of stools	Liquid stools with increased number of stools OR Mild dehydration	Liquid stools with moderate dehydration	Liquid stools resulting in severe dehydration with aggressive rehydration indicated OR Hypotensive shock
Dysphagia-Odynophagia	Symptomatic but able to eat usual diet	Symptoms causing altered dietary intake without medical intervention indicated	Symptoms causing severely altered dietary intake with medical intervention indicated	Life-threatening reduction in oral intake

GASTROINTESTINAL				
	Grade 1	Grade 2	Grade 3	Grade 4
Mucositis/Stomatitis (clinical exam) See also Proctitis, Dysphagia-Odynophagia	Erythema of the mucosa	Patchy pseudomembranes or ulcerations	Confluent pseudomembranes or ulcerations OR Mucosal bleeding with minor trauma	Tissue necrosis OR Diffuse spontaneous mucosal bleeding OR Life-threatening consequences (eg, aspiration, choking)
Nausea	Transient (< 24 hours) or intermittent nausea with no or minimal interference with oral intake	Persistent nausea resulting in decreased oral intake for 24–48 hours	Persistent nausea resulting in minimal oral intake for > 48 hours OR Aggressive rehydration indicated (eg, IV fluids)	Life-threatening consequences (eg, hypotensive shock)
Pancreatitis	NA	Symptomatic AND Hospitalization not indicated (other than ER visit)	Symptomatic AND Hospitalization indicated (other than ER visit)	Life-threatening consequences (eg, sepsis, circulatory failure, hemorrhage)
Proctitis (functional-symptomatic) Also see Mucositis/Stomatitis for Clinical Exam	Rectal discomfort AND No intervention indicated	Symptoms causing greater than minimal interference with usual social & functional activities OR Medical intervention indicated	Symptoms causing inability to perform usual social/functional activities OR Operative intervention indicated	Life-threatening consequences (eg, perforation)
Vomiting	Transient or intermittent vomiting with no or minimal interference with oral intake	Frequent episodes of vomiting with no or mild dehydration	Persistent vomiting resulting in orthostatic hypotension OR Aggressive rehydration indicated	Life-threatening consequences (eg, hypotensive shock)

NEUROLOGICAL				
	Grade 1	Grade 2	Grade 3	Grade 4
Alteration in Personality-Behavior or in Mood (eg, agitation, anxiety, depression, mania, psychosis)	Alteration causing no or minimal interference with usual social & functional activities	Alteration causing greater than minimal interference with usual social & functional activities	Alteration causing inability to perform usual social & functional activities	Behavior potentially harmful to self or others (eg, suicidal/homicidal ideation or attempt, acute psychosis) OR Causing inability to perform basic self-care functions
Altered Mental Status For Dementia, see Cognitive and Behavioral/Attentional Disturbance (including dementia and ADD)	Changes causing no or minimal interference with usual social & functional activities	Mild lethargy or somnolence causing greater than minimal interference with usual social & functional activities	Confusion, memory impairment, lethargy, or somnolence causing inability to perform usual social & functional activities	Delirium OR obtundation, OR coma
Ataxia	Asymptomatic ataxia detectable on exam OR Minimal ataxia causing no or minimal interference with usual social & functional activities	Symptomatic ataxia causing greater than minimal interference with usual social & functional activities	Symptomatic ataxia causing inability to perform usual social & functional activities	Disabling ataxia causing inability to perform basic self-care functions
Cognitive and Behavioral/Attentional Disturbance (including dementia and Attention Deficit Disorder)	Disability causing no or minimal interference with usual social & functional activities OR Specialized resources not indicated	Disability causing greater than minimal interference with usual social & functional activities OR Specialized resources on part-time basis indicated	Disability causing inability to perform usual social & functional activities OR Specialized resources on a full-time basis indicated	Disability causing inability to perform basic self-care functions OR Institutionalization indicated
CNS Ischemia (acute)	NA	NA	Transient ischemic attack	Cerebral vascular accident (CVA, stroke) with neurological deficit

NEUROLOGICAL				
	Grade 1	Grade 2	Grade 3	Grade 4
Developmental delay – Pediatric ≤ 16 Years	Mild developmental delay, either motor or cognitive, as determined by comparison with a developmental screening tool appropriate for the setting	Moderate developmental delay, either motor or cognitive, as determined by comparison with a developmental screening tool appropriate for the setting	Severe developmental delay, either motor or cognitive, as determined by comparison with a developmental screening tool appropriate for the setting	Developmental regression, either motor or cognitive, as determined by comparison with a developmental screening tool appropriate for the setting
Headache	Symptoms causing no or minimal interference with usual social & functional activities	Symptoms causing greater than minimal interference with usual social & functional activities	Symptoms causing inability to perform usual social & functional activities	Symptoms causing inability to perform basic self-care functions OR Hospitalization indicated (other than ER visit) OR Headache with significant impairment of alertness or other neurologic function
Insomnia	NA	Difficulty sleeping causing greater than minimal interference with usual social/functional activities	Difficulty sleeping causing inability to perform usual social & functional activities	Disabling insomnia causing inability to perform basic self-care functions
Neuromuscular Weakness (including myopathy & neuropathy)	Asymptomatic with decreased strength on exam OR Minimal muscle weakness causing no or minimal interference with usual social & functional activities	Muscle weakness causing greater than minimal interference with usual social & functional activities	Muscle weakness causing inability to perform usual social & functional activities	Disabling muscle weakness causing inability to perform basic self-care functions OR Respiratory muscle weakness impairing ventilation
Neurosensory Alteration (including paresthesia and painful neuropathy)	Asymptomatic with sensory alteration on exam or minimal paresthesia causing no or minimal interference with usual social & functional activities	Sensory alteration or paresthesia causing greater than minimal interference with usual social & functional activities	Sensory alteration or paresthesia causing inability to perform usual social & functional activities	Disabling sensory alteration or paresthesia causing inability to perform basic self-care functions

NEUROLOGICAL				
	Grade 1	Grade 2	Grade 3	Grade 4
Seizure: (new onset)	NA	1 seizure	2–4 seizures	Seizures of any kind that are prolonged, repetitive (eg, status epilepticus), or difficult to control (eg, refractory epilepsy)
Seizure: (pre-existing) For Worsening of Existing Epilepsy the Grades Should Be Based on an Increase from Previous Level of Control to Any of These Levels	NA	Increased frequency of pre-existing seizures (non-repetitive) without change in seizure character OR infrequent breakthrough seizures while on stable meds in a previously controlled seizure disorder	Change in seizure character from baseline either in duration or quality (eg, severity or focality)	Seizures of any kind that are prolonged, repetitive (eg, status epilepticus), or difficult to control (eg, refractory epilepsy)
Seizure – Pediatric < 18 Years	Seizure, generalized onset with or without secondary generalization, lasting < 5 minutes with < 24 hours post ictal state	Seizure, generalized onset with or without secondary generalization, lasting 5–20 minutes with < 24 hours post ictal state	Seizure, generalized onset with or without secondary generalization, lasting > 20 minutes	Seizure, generalized onset with or without secondary generalization, requiring intubation and sedation
Syncope (not associated with a procedure)	NA	Present	NA	NA
Vertigo	Vertigo causing no or minimal interference with usual social & functional activities	Vertigo causing greater than minimal interference with usual social & functional activities	Vertigo causing inability to perform usual social & functional activities	Disabling vertigo causing inability to perform basic self-care functions

MUSCULOSKELETAL				
	Grade 1	Grade 2	Grade 3	Grade 4
Arthralgia See also Arthritis	Joint pain causing no or minimal interference with usual social & functional activities	Joint pain causing greater than minimal interference with usual social & functional activities	Joint pain causing inability to perform usual social & functional activities	Disabling joint pain causing inability to perform basic self-care functions
Arthritis See also Arthralgia	Stiffness or joint swelling causing no or minimal interference with usual social & functional activities	Stiffness or joint swelling causing greater than minimal interference with usual social & functional activities	Stiffness or joint swelling causing inability to perform usual social & functional activities	Disabling joint stiffness or swelling causing inability to perform basic self-care functions
Bone Mineral Loss Pediatric < 21 Years	BMD t-score or z-score -2.5 to -1.0 BMD z-score -2.5 to -1.0	BMD t-score or z-score < -2.5 BMD z-score < -2.5	Pathological fracture (including loss of vertebral height) Pathological fracture (including loss of vertebral height)	Pathologic fracture causing life-threatening consequences Pathologic fracture causing life-threatening consequences
Myalgia (non-injection site)	Muscle pain causing no or minimal interference with usual social & functional activities	Muscle pain causing greater than minimal interference with usual social & functional activities	Muscle pain causing inability to perform usual social & functional activities	Disabling muscle pain causing inability to perform basic self-care functions
Osteonecrosis	NA	Asymptomatic with radiographic findings AND No operative intervention indicated	Symptomatic bone pain with radiographic findings OR Operative intervention indicated	Disabling bone pain with radiographic findings causing inability to perform basic self-care functions

SYSTEMIC				
	Grade 1	Grade 2	Grade 3	Grade 4
Acute Systemic Allergic Reaction	Localized urticaria (wheals) with no medical intervention indicated	Localized urticaria with medical intervention indicated OR Mild angioedema with no medical intervention indicated	Generalized urticaria OR Angioedema with medical intervention indicated OR Symptomatic mild bronchospasm	Acute anaphylaxis OR Life-threatening bronchospasm OR laryngeal edema
Chills	Symptoms causing no or minimal interference with usual social & functional activities	Symptoms causing greater than minimal interference with usual social & functional activities	Symptoms causing inability to perform usual social & functional activities	NA
Fatigue Malaise	Symptoms causing no or minimal interference with usual social & functional activities	Symptoms causing greater than minimal interference with usual social & functional activities	Symptoms causing inability to perform usual social & functional activities	Incapacitating fatigue/malaise symptoms causing inability to perform basic self-care functions
Fever (nonaxillary)	37.7°C to 38.6°C 99.8°F to 101.5°F	38.7°C to 39.3°C 101.6°F to 102.8°F	39.4°C to 40.5°C 102.9°F to 104.9°F	> 40.5°C > 104.9°F
Pain- Indicate Body Site See also Injection Site Pain, Headache, Arthralgia, and Myalgia	Pain causing no or minimal interference with usual social & functional activities	Pain causing greater than minimal interference with usual social & functional activities	Pain causing inability to perform usual social & functional activities	Disabling pain causing inability to perform basic self-care functions OR Hospitalization (other than ER visit) indicated
Unintentional Weight Loss	NA	5% to 9% loss in body weight from baseline	10% to 19% loss in body weight from baseline	≥ 20% loss in body weight from baseline OR Aggressive intervention indicated [eg, tube feeding or total parenteral nutrition]

INJECTION SITE REACTION				
	Grade 1	Grade 2	Grade 3	Grade 4
Injection Site Pain (pain without touching) Or Tenderness (pain when area is touched)	Pain/tenderness causing no or minimal limitation of use of limb	Pain/tenderness limiting use of limb OR Pain/tenderness causing greater than minimal interference with usual social & functional activities	Pain/tenderness causing inability to perform usual social & functional activities	Pain/tenderness causing inability to perform basic self-care function OR Hospitalization (other than ER visit) indicated for management of pain/tenderness
Injection Site Reaction (Localized), > 15 Years Pediatric ≤ 15 Years	Erythema OR Induration of 5 × 5 cm to 9 × 9 cm (or 25–81 × cm ²) Erythema OR Induration OR Edema present but ≤ 2.5 cm diameter	Erythema OR Induration OR Edema > 9 cm any diameter (or > 81 cm ²) Erythema OR Induration OR Edema > 2.5 cm diameter but < 50% surface area of the extremity segment (eg, upper arm/thigh)	Ulceration OR Secondary infection OR Phlebitis OR Sterile abscess OR Drainage Erythema OR Induration OR Edema involving ≥ 50% surface area of the extremity segment (eg, upper arm/thigh) OR Ulceration OR Secondary infection OR Phlebitis OR Sterile abscess OR Drainage	Necrosis (involving dermis and deeper tissue) Necrosis (involving dermis and deeper tissue)
Pruritis Associated with Injection See also Skin: Pruritis (itching—no skin lesions)	Itching localized to injection site AND Relieved spontaneously or with < 48 h treatment	Itching beyond the injection site but not generalized OR Itching localized to injection site requiring ≥ 48 h treatment	Generalized itching causing inability to perform usual social & functional activities	NA

ENDOCRINE/METABOLIC				
	Grade 1	Grade 2	Grade 3	Grade 4
Lipodystrophy (eg, back of neck, breasts, abdomen)	Detectable by study participant or caregiver (for young children and disabled adults)	Detectable on physical exam by health care provider	Disfiguring OR Obvious changes on casual visual inspection	NA
Diabetes Mellitus	NA	New onset without need to initiate medication OR Modification of current meds to regain glucose control	New onset with initiation of indicated med OR Diabetes uncontrolled despite treatment modification	Life-threatening consequences (eg, ketoacidosis, hyperosmolar non-ketotic coma)
Gynecomastia	Detectable by study participant or caregiver (for young children and disabled adults)	Detectable on physical exam by health care provider	Disfiguring OR Obvious on casual visual inspection	NA
Hyperthyroidism	Asymptomatic	Symptomatic causing greater than minimal interference with usual social & functional activities OR Thyroid suppression therapy indicated	Symptoms causing inability to perform usual social & functional activities OR Uncontrolled despite treatment modification	Life-threatening consequences (eg, thyroid storm)
Hypothyroidism	Asymptomatic	Symptomatic causing greater than minimal interference with usual social & functional activities OR Thyroid replacement therapy indicated	Symptoms causing inability to perform usual social & functional activities OR Uncontrolled despite treatment modification	Life-threatening consequences (eg, myxedema coma)
Lipoatrophy (eg, fat loss from the face, extremities, buttocks)	Detectable by study participant or caregiver (for young children and disabled adults)	Detectable on physical exam by health care provider	Disfiguring OR Obvious on casual visual inspection	NA

GENITOURINARY				
	Grade 1	Grade 2	Grade 3	Grade 4
Intermenstrual Bleeding (IMB)	Spotting observed by participant OR Minimal blood observed during clinical or colposcopic exam	Intermenstrual bleeding not greater in duration or amount than usual menstrual cycle	Intermenstrual bleeding greater in duration or amount than usual menstrual cycle	Hemorrhage with life-threatening hypotension OR Operative intervention indicated
Urinary Tract obstruction (eg, stone)	NA	Signs or symptoms of urinary tract obstruction without hydronephrosis or renal dysfunction	Signs or symptoms of urinary tract obstruction with hydronephrosis or renal dysfunction	Obstruction causing life-threatening consequences

INFECTION				
	Grade 1	Grade 2	Grade 3	Grade 4
Infection (any other than HIV infection)	Localized, no systemic antiꞵbial treatment indicated AND Symptoms causing no or minimal interference with usual social & functional activities	Systemic antiꞵbial treatment indicated OR Symptoms causing greater than minimal interference with usual social & functional activities	Systemic antiꞵbial treatment indicated AND Symptoms causing inability to perform usual social & functional activities OR Operative intervention (other than simple incision and drainage) indicated	Life-threatening consequences (eg, septic shock)

Basic Self-care Functions: Activities such as bathing, dressing, toileting, transfer/movement, continence, and feeding.

Usual Social & Functional Activities: Adaptive tasks and desirable activities, such as going to work, shopping, cooking, use of transportation, pursuing a hobby, etc.

Appendix 5. Pregnancy Precautions, Definition for Female of Childbearing Potential, and Contraceptive Requirements

1) Pregnancy and Contraception Requirements for Males and Females of Childbearing Potential

Pregnancy must be excluded before the start of treatment with study drug and prevented thereafter by reliable contraceptive methods. A pregnancy test will be performed at the screening visit to ensure pregnant women are not included in the trial. Please refer to the latest version of the investigator's brochure for additional information about the effects of GS-5806.

2) Definition of Female of Childbearing Potential

For the purposes of this study, a female subject of childbearing potential is a nonmenopausal female who has not had a hysterectomy, bilateral oophorectomy, or medically documented ovarian failure. This definition includes a pubertal female who has not yet started menstruating. A woman who has had a tubal sterilization is considered to be of childbearing potential.

A female subject may be considered menopausal in either of the following conditions:

- Surgical menopause: Appropriate medical documentation of prior complete bilateral oophorectomy (ie, surgical removal of the ovaries and occurring at the age at which the procedure was performed)
- Spontaneous menopause: Permanent cessation of previously occurring menses as a result of ovarian failure with documentation of hormonal deficiency by a certified health care provider. The worldwide mean age of spontaneous menopause is 49.24 (SD 1.73) years
- A hormonal deficiency should be properly documented in the case of suspected spontaneous menopause as follows:
 - If age ≥ 54 years and with the absence of normal menses: serum follicle stimulating hormone (FSH) level elevated to within the postmenopausal range based on the laboratory reference range where the hormonal assay is performed
 - If age < 54 years and with the absence of normal menses: negative serum or urine human chorionic gonadotropin (hCG) with concurrently elevated serum FSH level in the postmenopausal range, depressed estradiol (E2) level in the postmenopausal range, and absent serum progesterone level, based on the laboratory reference ranges where the hormonal assays are performed

3) Contraceptive Requirements

Female subjects of childbearing potential and male subjects who engage in intercourse must agree to utilize protocol specified methods of contraception from the screening/enrollment visit throughout the study period and for 90 days following the last dose of study drug. Female study subjects who are not heterosexually active must provide periodic confirmation

of continued abstinence from heterosexual intercourse and regular pregnancy testing while taking GS-5806. The investigator will counsel subjects on the protocol specified method(s) for avoiding pregnancy in case the subject chooses to engage in heterosexual intercourse.

Protocol specified contraceptive methods are as follows: (1) a combination of one hormonal method and one barrier method; (2) two barrier methods where one method is the male condom; or (3) use of an intrauterine device (IUD) or tubal sterilization; see REF _Ref276992261 \h * MERGEFORMAT [Appendix Table 1](#) below. Acceptable hormonal methods include injectable progesterone, progesterone implants, combination oral contraceptives, transdermal contraceptive patch, and vaginal ring. Acceptable barrier methods include diaphragm with spermicide, cervical cap with spermicide, and the male condom. Female subjects must use either a hormonal method or a barrier method if the partner has a vasectomy. If a subject has undergone tubal sterilization or has had a Copper T 380A IUD or LNG 20 IUD inserted, no other contraception is needed.

If tubal sterilization is via the Essure procedure, verification of tubal blockage by hysterosalpingogram (HSP) must be performed approximately 3 months after microinsertion. Prior to verification, Essure is not considered a reliable form of contraception and the contraception methods described below must be used. Female subjects who utilize hormonal contraceptives as one of their birth control methods must have used the same method for at least 3 months before study dosing.

Female subjects of childbearing potential must have a negative urine pregnancy test at screening prior to receiving the first dose of study drug. A serum pregnancy test will be performed on Day 14. Lactating females must discontinue nursing before IMP administration.

Appendix Table 1. Protocol Specified Contraceptive Methods

Methods to Use by Themselves	Combination Methods	
	Hormone Methods (choose one and use with a barrier method)	Barrier Methods (use both OR choose one and use with a hormone method)
Intrauterine Devices (IUDs) <ul style="list-style-type: none"> • Copper T 380A IUD • LNG 20 IUD 	Estrogen and Progesterone <ul style="list-style-type: none"> • Oral contraceptives • Transdermal patch • Vaginal ring 	<ul style="list-style-type: none"> • Diaphragm with spermicide OR • Cervical cap with spermicide • Male condom (with or without spermicide)
Tubal Sterilization <ul style="list-style-type: none"> • Injection • Implant 		
Partner's vasectomy must be used with a hormone or barrier method.		

The investigator will counsel all subjects on the most effective method(s) for avoiding pregnancy during the study.

4) Additional Requirements for Male Subjects

Male subjects must agree to use condoms during heterosexual intercourse and avoid sperm donation while enrolled in the study and for at least 90 days after administration of the last dose of study medication

Use of condoms, with or without spermicide, has been proven to decrease the risk of transmission of HIV and other sexually transmitted diseases. The use of spermicide is not recommended if the subject or subject's partner is infected with HIV.

5) Procedures to be Followed in the Event of Pregnancy

Subjects will be instructed to notify the investigator if they become pregnant at any time during the study, or if they become pregnant within 90 days or 14 weeks of last study drug dose. Subjects who become pregnant or who suspect that they are pregnant during the study must report the information to the investigator and discontinue study drug immediately. Subjects whose partner has become pregnant or suspects she is pregnant during the study must report the information to the investigator.

Instructions for reporting pregnancy, partner pregnancy, and pregnancy outcome are outlined in Section [7.6.2.1](#).