



CLINICAL STUDY PROTOCOL

Study Title:	An Open Label, Roll Over Study to Provide Idelalisib to Subjects Previously Treated with the Investigational PI3K δ Inhibitor, GS-9820	
Sponsor:	Gilead Sciences, Inc. 199 East Blaine Street Seattle, WA 98102	
IND Number:	N/A	
EudraCT Number:	2015-005766-39	
Clinical Trials.gov Identifier:		
Indication:	Lymphoid Malignancies	
Protocol ID:	GS-US-313-2120	
Gilead Study Director or Clinical Program Manager:	Name:	PPD
	Telephone:	PPD
	Fax:	(PPD
Gilead Medical Monitor:	Name:	Mario Marcondes
	Telephone:	PPD
	Fax:	PPD
Protocol Version/Date:	Original:	05 January 2016
	Amendment 1:	28 March 2016
	Amendment 2:	26 August 2016

CONFIDENTIALITY STATEMENT

The information contained in this document, particularly unpublished data, is the property or under control of Gilead Sciences, Inc., and is provided to you in confidence as an investigator, potential investigator, or consultant, for review by you, your staff, and an applicable Institutional Review Board or Independent Ethics Committee. The information is only to be used by you in connection with authorized clinical studies of the investigational drug described in the protocol. You will not disclose any of the information to others without written authorization from Gilead Sciences, Inc., except to the extent necessary to obtain informed consent from those persons to whom the drug may be administered.

TABLE OF CONTENTS

TABLE OF CONTENTS	2
LIST OF IN-TEXT TABLES	4
LIST OF IN-TEST FIGURES	4
PROTOCOL SYNOPSIS	5
GLOSSARY OF ABBREVIATIONS AND DEFINITION OF TERMS.....	8
1. INTRODUCTION	10
1.1. Background	10
1.2. Idelalisib.....	10
1.3. Rationale for This Study	11
1.4. Benefit/Risk Assessment for the Study	11
1.5. Compliance	11
2. OBJECTIVES	12
3. STUDY DESIGN.....	13
3.1. Endpoints	13
3.2. Study Design	13
3.3. Study Treatments	13
3.4. Duration of Treatment.....	13
3.5. Discontinuation Criteria	13
3.6. Source Data	14
3.7. Biomarker Testing.....	14
4. SUBJECT POPULATION.....	15
4.1. Number of Subjects and Subject Selection	15
4.2. Inclusion Criteria.....	15
4.3. Exclusion Criteria.....	15
5. INVESTIGATIONAL MEDICINAL PRODUCTS	17
5.1. Randomization, Blinding and Treatment Codes	17
5.2. Description and Handling of Study Treatments	17
5.2.1. Formulation	17
5.2.2. Packaging and Labeling	17
5.2.3. Storage and Handling	17
5.2.4. Dosage and Administration of Idelalisib	17
5.2.5. Dispensing.....	18
5.2.6. Premedication.....	18
5.2.7. Administration Instructions	18
5.2.8. Dosing Schedule.....	18
5.2.9. Dose Levels	18
5.2.10. Idelalisib Dose Adjustments.....	19
5.3. Prior and Concomitant Medications	23
5.3.1. Anticancer or Experimental Therapies Other than Investigational Treatments.....	23
5.3.2. Antibiotics/ PJP Prophylaxis	23
5.3.3. Antidiarrheals	25
5.3.4. Corticosteroids	25
5.3.5. Granulocyte Colony-Stimulating Factors and Erythropoietin	25
5.3.6. Drugs that Alter CYP3A-Dependent Metabolism	25

5.3.7.	Drugs that undergo CYP3A-Dependent Metabolism	26
5.3.8.	Immunization	26
5.3.9.	Ultraviolet Exposure	26
5.3.10.	Surgery	26
5.4.	Accountability for Idelalisib	27
5.4.1.	Overdose Precautions	27
5.4.2.	Inadvertent Exposure and Spill Precautions	27
5.4.3.	Investigational Medicinal Product Return or Disposal	28
5.5.	Discontinuation from Study	28
6.	STUDY PROCEDURES	29
6.1.	Subject Enrollment	29
6.1.1.	Subject Recruitment	29
6.1.2.	Subject Compensation for Participation	29
6.1.3.	Screening Visit	29
6.2.	Treatment Assessments	29
6.2.1.	Clinical Evaluation	30
6.2.2.	Laboratory Assessments	30
6.3.	End of Study	31
7.	ADVERSE EVENTS AND TOXICITY MANAGEMENT	34
7.1.	Definitions of Adverse Events, Adverse Reactions, and Serious Adverse Events	34
7.1.1.	Adverse Events	34
7.1.2.	Serious Adverse Events	34
7.1.3.	Clinical Laboratory Abnormalities and Other Abnormal Assessments as Adverse Events or Serious Adverse Events	35
7.2.	Assessment of Adverse Events and Serious Adverse Events	35
7.2.1.	Assessment of Causality for Idelalisib and Procedures	35
7.2.2.	Assessment of Severity	36
7.3.	Evaluation, Intervention, and Drug Discontinuation for Specific Adverse Events or Conditions	37
7.3.1.	Dermatological Events (Idelalisib)	37
7.3.2.	Gastrointestinal Events	37
7.3.3.	Hepatic Events	38
7.3.4.	Hematological and Immunological Events	39
7.3.5.	Pulmonary Events	39
7.3.6.	Secondary Malignancies	40
7.3.7.	Tumor Lysis Syndrome	40
7.4.	Investigator Requirements and Instructions for Reporting Adverse Events and Serious Adverse Events to Gilead	40
7.4.1.	Serious Adverse Event (eSAE) Reporting Process	41
7.5.	Gilead Reporting Requirements	41
7.5.1.	Reporting of Adverse Events Relating and Other Anticipated Medical Events in the Study Population	42
7.5.2.	Toxicity Management	42
7.6.	Special Situations Reports	42
7.6.1.	Definitions of Special Situations	42
7.6.2.	Instructions for Reporting Special Situations	43
8.	STATISTICAL CONSIDERATIONS	45
8.1.	Analysis Objectives	45
8.2.	Safety Endpoints	45
8.3.	Analysis Sets	45
8.4.	Analysis Methods	45

8.5.	Adverse Events.....	45
9.	RESPONSIBILITIES.....	46
9.1.	Investigator Responsibilities	46
9.1.1.	Good Clinical Practice.....	46
9.1.2.	Independent Ethics Committee (IEC) Review and Approval.....	46
9.1.3.	Informed Consent.....	46
9.1.4.	Confidentiality.....	47
9.1.5.	Study Files and Retention of Records	47
9.1.6.	Case Report Forms.....	48
9.1.7.	Drug Accountability and Return	49
9.1.8.	Inspections.....	49
9.1.9.	Protocol Compliance	49
9.2.	Sponsor Responsibilities	49
9.2.1.	Protocol Modifications.....	49
9.2.2.	Communications with Regulatory Authorities	50
9.2.3.	Study Report and Publications	50
9.3.	Joint Investigator/Sponsor Responsibilities	50
9.3.1.	Payment Reporting.....	50
9.3.2.	Access to Information for Monitoring.....	51
9.3.3.	Access to Information for Auditing or Inspections	51
9.3.4.	Study Discontinuation	51
10.	REFERENCES	52
11.	APPENDICES	55
Appendix 1.	Investigator Signature Page.....	56
Appendix 2.	Pregnancy Precautions, Definition for Female of Childbearing Potential, and Contraceptive Requirements.....	57

LIST OF IN-TEXT TABLES

Table 5-1.	Idelalisib Dose Levels	19
Table 5-2.	Dose Adjustment Guidelines {Gilead Sciences Inc 2014}.....	20
Table 6-1.	Schedule of Study Procedures	33
Table 7-1.	Grading of Adverse Event Severity.....	36

LIST OF IN-TEST FIGURES

Figure 7-1.	Kaplan-Meier Time to Diarrhea or Colitis	38
-------------	--	----

PROTOCOL SYNOPSIS

Gilead Sciences, Inc.
199 East Blaine Street
Seattle, WA 98102

Study Title:	An Open Label, Roll Over Study to Provide Idelalisib to Subjects Previously Treated with the Investigational PI3K δ Inhibitor, GS-9820
---------------------	---

IND Number:	Not Applicable
EudraCT Number:	2015-005766-39
Clinical Trials.gov Identifier:	

Study Centers Planned:	2 centers in the Netherlands
-------------------------------	------------------------------

Objectives:	<p>The primary objective of this study is as follows:</p> <ul style="list-style-type: none">• To provide open-label idelalisib to subjects receiving GS-9820 in Study GS-US-315-0102 at the time of study closure who have had objective evidence of clinical benefit defined as at least stable disease on imaging assessed by an independent review committee (IRC) and no toxicities prior to enrollment in this study that would preclude initiating therapy with idelalisib. Idelalisib and GS-9820 are both in the class of agents that inhibit PI3Kδ and as such this exchange of class for class agent is warranted and acceptable.
--------------------	---

Study Design:	This study is an open-label, rollover study to provide idelalisib to subjects receiving GS-9820 in Study GS-US-315-0102 at the time of study closure.
Number of Subjects Planned:	Approximately 6 subjects
Target Population:	Subjects receiving GS-9820 in Study GS-US-315-0102 at the time of study closure who have objective evidence of clinical benefit defined as at least stable disease on imaging assessed by the IRC at final response assessment prior to enrollment in this study.

Duration of Treatment: Subjects will be treated until withdrawal from study drug, progressive disease, intolerable study drug-related toxicity, pregnancy, substantial noncompliance with study procedures, or study discontinuation. Idelalisib administration should only be continued in subjects with a positive benefit-risk profile assessment as per the investigator.

Diagnosis and Main Eligibility Criteria: Inclusion Criteria

Subjects must meet all of the following inclusion criteria to be eligible for participation in this study:

- 1) Receiving GS-9820 in Study GS-US-315-0102 with objective evidence of clinical benefit defined as at least stable disease on imaging assessed by the IRC at the time of Study GS-US-315-0102 closure
- 2) For female subjects of childbearing potential, willingness to use a protocol recommended method of contraception during heterosexual intercourse from the signing of informed consent throughout the study treatment period and up to 30 days from the last dose of idelalisib (see [Appendix 2](#))
- 3) For male subjects of reproductive potential having intercourse with females of childbearing potential, willing to use a protocol recommended method of contraception during heterosexual intercourse and to refrain from sperm donation throughout the study treatment period and for 90 days following discontinuation of idelalisib (see [Appendix 2](#))
- 4) Willingness to comply with scheduled visits, drug administration plan, imaging studies, laboratory tests, other study procedures, and study restrictions, including mandatory prophylaxis for *Pneumocystis jirovecii* pneumonia (PJP). ***Note: Psychological, social, familial, or geographical factors that might preclude adequate study participation should be considered.***
- 5) Evidence of a personally signed informed consent indicating that the subject is aware of the neoplastic nature of their disease and has been informed of the procedures to be followed, the experimental nature of the therapy, alternatives, potential benefits, possible side effects, potential risks and discomforts, and other pertinent aspects of study participation.

Exclusion Criteria

Subjects who meet any of the following exclusion criteria are not eligible to be enrolled in this study:

- 1) Known hypersensitivity or intolerance to any of the active substances or excipients in the formulation of idelalisib.

- 2) Toxicities that would preclude initiating therapy with idelalisib prior to enrollment (eg, history of drug-induced pneumonitis, ongoing inflammatory bowel disease)
- 3) Concurrent participation in another therapeutic clinical trial.
- 4) Pregnant or breastfeeding
- 5) Ongoing infection, treatment, or prophylaxis for CMV within the past 28 days.

**Study Procedures/
Frequency:**

All subjects will receive idelalisib 150 mg taken orally, twice per day (BID) continuously. Subjects will undergo disease assessments and receive medical care per institutional standards of care.

**Test Product, Dose,
and Mode of
Administration:**

Idelalisib: 150 mg taken orally BID starting on Day 1 and administered continuously thereafter.

**Reference Therapy,
Dose, and Mode of
Administration:**

None

**Criteria for
Evaluation:**

Safety:

Overall safety profile characterized by the type, frequency, severity, timing of onset, duration, and relationship to study therapy of \geq Grade 3 adverse events (AEs), serious adverse events (SAEs), and deaths.

Efficacy:

Investigator response assessments

Statistical Methods:

Safety will be assessed by incidence of \geq Grade 3 AEs, SAEs, and deaths. Efficacy will be evaluated by investigator response assessments. Both safety and efficacy will be assessed using data collected from subjects who received at least 1 dose of idelalisib. All analyses will be limited to descriptive summaries and listings.

Sample Size:

Up to 6 subjects

This study will be conducted in accordance with the guidelines of Good Clinical Practice (GCP) including archiving of essential documents.

GLOSSARY OF ABBREVIATIONS AND DEFINITION OF TERMS

AE	adverse event
ALT	alanine aminotransferase
ANC	absolute neutrophil count
AST	aspartate aminotransferase
AUC	area under the concentration versus time curve
β-HCG	beta human chorionic gonadotropin
BID	bis in die (twice daily)
CFR	Code of Federal Regulations
CLL	chronic lymphocytic leukemia
CRO	contract research organization
CSR	clinical study report
CTCAE	Common Terminology Criteria for Adverse Events
CYP	cytochrome P450
DSPH	Drug Safety and Public Health
eCRF	electronic case report form
EOS	end of study
EU	European Union
FDA	Food and Drug Administration
FSH	follicle stimulating hormone
G-CSF	granulocyte colony-stimulating factor
GCP	good clinical practice
GM-CSF	granulocyte-macrophage colony-stimulating factors
HLT	High-Level Term
HMG-CoA	3-hydroxy-3-methyl-glutaryl-Coenzyme A
IB	investigator's brochure
ICH	International Conference on Harmonisation
iNHL	indolent non-Hodgkin lymphoma
IEC	independent ethics committee
IUD	intrauterine device
MCL	mantle cell lymphoma
NHL	non-Hodgkin lymphoma
PI3K	phosphatidylinositol 3-kinase
PDE5	phosphodiesterase-5
PJP	pneumocystis jirovecii pneumonia
SAE	serious adverse event
SJS	Stevens-Johnson Syndrome
SOC	system organ class

SOP	standard operating procedure
SADR	serious adverse drug reaction
SUSAR	suspected unexpected serious adverse reactions
TEN	Toxic Epidermal Necrolysis
ULN	upper limit of normal

1. INTRODUCTION

1.1. Background

B-cell lymphoid malignancies comprise the most common hematological malignancies {[Surveillance Epidemiology and End Results \(SEER\) Program 2011](#)}. These cancers arise from the accumulation of monoclonal B lymphocytes in lymph nodes and often in organs such as blood, bone marrow, lymph nodes, spleen, and liver. Among the variants of these cancers are non-Hodgkin lymphomas (NHL), including diffuse large B-cell lymphoma (DLBCL), indolent non Hodgkin lymphoma (iNHL), and mantle cell lymphoma (MCL), as well as chronic lymphocytic leukemia (CLL) and Hodgkin lymphoma (HL). These disorders are characterized by lymphadenopathy that is frequently disturbing for patients and can sometimes induce life threatening organ dysfunction; patients may also have constitutional symptoms (fevers, night sweats, and/or weight loss) and fatigue {[Diehl et al 2004](#), [Dighiero et al 2008](#), [Salles 2007](#), [Williams et al 2010](#)}.

The goal of therapy for these diseases is to induce tumor regression and delay tumor progression in order to control disease-related complications and potentially extend life. Patients who require treatment are commonly given chemotherapeutic and/or immunotherapeutic agents {[Eichhorst et al 2010](#), [Friedberg 2011](#), [Gribben et al 2011](#), [Hoppe et al 2008](#), [Jost 2007](#), [Zelenetz et al 2011](#)}. Among patients with iNHL, CLL, and MCL, front line combination therapies can be effective in providing durable remissions {[Hallek et al 2010](#), [Lenz et al 2005](#), [Recher et al 2011](#), [Santoro et al 1987](#), [Schulz et al 2007](#)}. In DLBCL and HL, such front-line regimens can be curative in the majority of patients {[Kuruvilla 2009](#), [Recher et al 2011](#), [Santoro et al 1987](#)}. However, most treated patients with iNHL, CLL, and MCL will eventually experience disease relapse. Some patients with DLBCL or HL will experience recurrent disease even with initial induction therapy and later salvage therapy. For any of these cancers, further sequential therapies are given in an attempt to control disease manifestations. Despite use of agents with differing mechanisms of action, progressive resistance to treatment develops. Patients with progressive disease have a poor prognosis; median survival for these groups of patients is generally ≤ 2 years {[Di Bella et al 2010](#), [Friedberg 2011](#), [Goy et al 2009](#), [Hess et al 2009](#), [Keating et al 2002](#), [Moskowitz et al 2009](#), [Wierda et al 2010](#)}. Novel mechanisms of action are needed to offer additional treatment options for patients with lymphoid malignancies who are experiencing progressive lymphadenopathy or symptoms due to disease progression.

1.2. Idelalisib

Idelalisib (Zydelig®) was first approved in the United States on July 23, 2014 for the treatment of relapsed CLL, follicular lymphoma (FL), and small lymphocytic lymphoma (SLL), followed by approval in the EU on September 18, 2014 (centrally authorized). To date, Zydelig is currently approved in 37 countries. Refer to local labeling for the approved indication statements.

Idelalisib is a potent competitive inhibitor of the adenosine triphosphate (ATP) binding site of the phosphatidylinositol 3 kinase (PI3K) p110 δ catalytic domain, which has been shown to be prominently expressed in cells of hematopoietic origin {[Okkenhaug et al 2003](#), [Vanhaesebroeck et al 2005](#)}. The effects of p110 δ on lymphocyte activation/function, cellular proliferation, and protection from apoptosis provide the rationale for targeting this isoform as a therapy for hematologic malignancies.

Further details on the preclinical pharmacology, toxicology, metabolism and pharmacokinetics (PK) of idelalisib can be found in the idelalisib Investigator's Brochure (IB).

1.3. Rationale for This Study

Study GS-US-315-0102 is being conducted to evaluate the safety and efficacy of GS-9820, a second generation PI3K δ inhibitor in subjects with iNHL, DLBCL, MCL, HL, or CLL. GS-9820 was anticipated to offer similar efficacy to idelalisib in lymphoid malignancies while offering a more favorable safety profile than idelalisib. The development of GS-9820 has been discontinued by Gilead Sciences due to demonstration of a similar safety profile to idelalisib. Manufacture of the investigational agent GS-9820 has been discontinued, and will no longer be available to the ongoing subjects in Study GS-US-315-0102.

This rollover study provides access to idelalisib for eligible subjects receiving GS-9820 in Study GS-US-315-0102 at the time of study closure who have had objective evidence of clinical benefit defined as at least stable disease on imaging assessed by the independent review committee (IRC) and no toxicities prior to enrollment in this study that would preclude initiating therapy with idelalisib. Subjects will be allowed to receive treatment on this study until unacceptable toxicity, progressive disease, study withdrawal, or death occurs.

1.4. Benefit/Risk Assessment for the Study

Subjects enrolled in this study have a serious life-threatening disease, with limited treatment options. Without treatment their disease will progress and ultimately be fatal. Transitioning subjects from GS-9820 to idelalisib, a similar agent in class that has shown proof of clinical activity and has received regulatory approval for the treatment of relapsed CLL and iNHL {[Gilead Sciences Limited 2015](#)}, is rational as described in Section 1.3 of this protocol; therefore, subjects enrolled in this study may derive clinical benefit defined as an improvement in disease control such as response to study treatment. The risks that may accompany study treatment are related to the identified and potential toxicities of treatment with idelalisib and are described in Section 5 of this protocol and in the ICF. The management of these toxicities is described in [Table 5-2](#). Taken together, there is a positive benefit/risk for initiating study treatment with idelalisib in subjects previously treated with GS-9820.

1.5. Compliance

This study will be conducted in compliance with this protocol, Good Clinical Practice (GCP), and all applicable regulatory requirements.

2. OBJECTIVES

The primary objective of this study is:

- To provide idelalisib, a marketed PI3K δ inhibitor, in lieu of GS-9820, an investigational second generation PI3K δ inhibitor, to subjects receiving GS-9820 in Study GS-US-315-0102 at the time of study closure who have had objective evidence of clinical benefit defined as at least stable disease on imaging assessed by the IRC and no toxicities prior to enrollment in this study that would preclude initiating therapy with idelalisib. Idelalisib and GS-9820 are both in the class of agents that inhibit PI3K δ and as such this exchange of class for class agent is warranted and acceptable.

3. STUDY DESIGN

3.1. Endpoints

There is no primary endpoint of this study.

3.2. Study Design

This study is an open-label, rollover study to provide idelalisib to subjects receiving GS-9820 in Study GS-US-315-0102 at the time of study closure.

3.3. Study Treatments

All subjects will receive idelalisib 150 mg taken orally, twice per day (BID) continuously.

3.4. Duration of Treatment

Treatment will continue until unacceptable toxicity, disease progression, study discontinuation (outlined below), or death occurs.

3.5. Discontinuation Criteria

Subjects may be withdrawn from the study under the following circumstances:

- The subject withdraws consent to participate in the study
- The subject permanently discontinues idelalisib treatment for any reason
- The subject experiences a toxicity that necessitates permanent discontinuation of idelalisib treatment
- The subject has progressive disease
- The subject does not comply with the requirements of the protocol (eg initiation of a non-protocol anti-tumor treatment)
- Gilead, a regulatory agency, or an independent ethics committee (IEC) discontinues the study

The reason for withdrawal will be recorded in the eCRF.

3.6. Source Data

Electronic data (ie, diagnostic machines that transcribe data directly to a database, or data entered directly into an Electronic Medical Record system) is considered source data, provided the data is not recorded directly on the CRF/eCRF, and provided there is a clear audit trail in the electronic record(s). No data will be recorded directly on the CRF/eCRF, and any data recorded directly on the CRF/eCRF will not be considered source data.

3.7. Biomarker Testing

There will be no biomarker testing in this study.

4. SUBJECT POPULATION

4.1. Number of Subjects and Subject Selection

Approximately 6 subjects receiving GS-9820 in Study GS-US-315-0102 at the time of study closure are anticipated.

4.2. Inclusion Criteria

Subjects must meet all of the following inclusion criteria to be eligible for participation in this study:

- 1) Receiving GS-9820 in Study GS-US-315-0102 with objective evidence of clinical benefit defined as at least stable disease on imaging assessed by the IRC at the time of Study GS-US-315-0102 closure
- 2) For female subjects of childbearing potential, willingness to use a protocol recommended method of contraception during heterosexual intercourse from the signing of informed consent throughout the study treatment period and up to 30 days from the last dose of idelalisib (see [Appendix 2](#))
- 3) For male subjects of reproductive potential having intercourse with females of childbearing potential, willing to use a protocol recommended method of contraception during heterosexual intercourse and to refrain from sperm donation throughout the study treatment period and for 90 days following discontinuation of idelalisib (see [Appendix 2](#))
- 4) Willingness to comply with scheduled visits, drug administration plan, imaging studies, laboratory tests, other study procedures, and study restrictions, including mandatory prophylaxis for *Pneumocystis jirovecii* pneumonia (PJP). Note: Psychological, social, familial, or geographical factors that might preclude adequate study participation should be considered.
- 5) Evidence of a personally signed informed consent indicating that the subject is aware of the neoplastic nature of their disease and has been informed of the procedures to be followed, the experimental nature of the therapy, alternatives, potential benefits, possible side effects, potential risks and discomforts, and other pertinent aspects of study participation.

4.3. Exclusion Criteria

Subjects who meet *any* of the following exclusion criteria are not eligible to be enrolled in this study:

- 1) Known hypersensitivity or intolerance to any of the active substances or excipients in the formulation of idelalisib.

- 2) Toxicities that would preclude initiating therapy with idelalisib prior to enrollment (eg history of drug-induced pneumonitis, ongoing inflammatory bowel disease)
- 3) Concurrent participation in another therapeutic clinical trial.
- 4) Pregnant or breastfeeding.
- 5) Ongoing infection, treatment, or prophylaxis for CMV within the past 28 days.

5. INVESTIGATIONAL MEDICINAL PRODUCTS

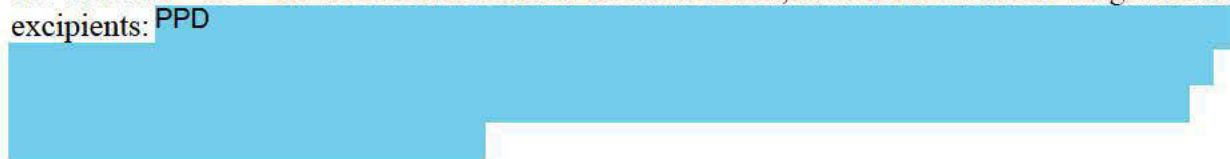
5.1. Randomization, Blinding and Treatment Codes

The study is open-label and non-randomized.

5.2. Description and Handling of Study Treatments

5.2.1. Formulation

Idelalisib 150 mg tablets are pink, oval-shaped and debossed with “GSI” on one side and “150” on the other. The 100 mg tablets are orange, oval-shaped and debossed with “GSI” on one side and “100” on the other. All tablets are film-coated, and include the following inactive excipients: PPD



5.2.2. Packaging and Labeling

Idelalisib tablets, 150 mg or 100 mg, are packaged in white, high density polyethylene (HDPE) bottles. Each bottle contains 60 tablets and polyester packing material. Each bottle is enclosed with a white, continuous thread, child-resistant polypropylene screw cap with an induction-sealed and aluminum-faced liner.

Idelalisib to be distributed to centers in the US and other participating countries shall be labeled to meet applicable requirements of the United States Food and Drug Administration (FDA), EU Guideline to Good Manufacturing Practice - Annex 13 (Investigational Medicinal Products), and/or other local regulations.

5.2.3. Storage and Handling

Idelalisib should be stored at controlled room temperature of 25°C (77°F); excursions are permitted between 15°C and 30°C (59°F and 86°F). Storage conditions are specified on the label. Until dispensed to the subjects, all bottles of study drugs should be stored in a securely locked area, accessible only to authorized site personnel.

To ensure the stability and proper identification, study drug should not be stored in a container other than the container in which they were supplied. Consideration should be given to handling, preparation, and disposal through measures that minimize drug contact with the body. Appropriate precautions should be followed to avoid direct eye contact or exposure when handling.

5.2.4. Dosage and Administration of Idelalisib

Idelalisib formulated drug product of 100 and 150 mg strengths has been manufactured for clinical trials and will be provided to the subject to be taken at home. Subjects should be instructed to take the doses with water. Idelalisib may be taken with or without food. Missed doses should not be taken unless it is within 6 hours of the scheduled dosing and vomited doses should be retaken only if the tablet is visible in the vomitus.

Idelalisib will be taken twice daily. Idelalisib should be taken at approximately the same times each day. Ideally, doses should be taken at approximately 12 hour intervals as instructed (eg, at 7 AM and at 7 PM). While it is realized that variations in dosing schedule may occur in the outpatient setting, the prescribed regimen should be followed as closely as possible.

5.2.5. Dispensing

The clinic staff (eg, pharmacist or other qualified person) will be responsible for dispensing idelalisib. It is planned that idelalisib will be dispensed at 4-week intervals through the first 16 weeks of treatment, at 8-weeks, and at 12-week intervals thereafter. Sufficient idelalisib will be provided for each study period at the beginning of the period. Tablets should be dispensed in the original bottles provided.

The clinic staff (eg, pharmacist or other qualified person) will write the subject number on each bottle that is dispensed. Immediately before dispensing, the clinic staff will write the bottle number for each dispensed bottle in the idelalisib administration record corresponding to the subject number.

5.2.6. Premedication

No specific pre-medications or supporting medications are required in conjunction with idelalisib administration.

5.2.7. Administration Instructions

The prescribed dose of idelalisib should be taken orally. At each dose administration, the tablet number corresponding to the appropriate dose of idelalisib is to be swallowed whole with 100 to 200 mL (~4 to 8 ounces) of water. In case of breakage of the tablets in the oral cavity, additional water should be taken as a rinse.

Idelalisib may be taken with or without food. There are no known dietary restrictions related to idelalisib use.

5.2.8. Dosing Schedule

Idelalisib will be administered on a BID schedule. Idelalisib should be taken at approximately the same times each day.

5.2.9. Dose Levels

Idelalisib dose levels are shown in [Table 5-1](#). The starting dose level will be 150 mg BID. The lower dose level (Dose Level -1) is provided in case a subject requires a dose modification.

Table 5-1. Idelalisib Dose Levels

Dose Level	Dosing Regimen
Starting	150 mg BID
-1	100 mg BID

Abbreviation: BID=twice per day

Consistent with [Table 5-2](#), if a subject experiences an AE that is suspected to be related to idelalisib during the course of study, idelalisib administration may be held, as necessary, until the AE resolves or stabilizes to an acceptable degree (as defined in [Table 5-2](#)). Thereafter, idelalisib may be reinitiated at either the Starting Dose Level or at Dose Level -1 consistent with the instructions in [Section 5.2.10](#). A further attempt at reinitiation of therapy at Dose Level -1 may be attempted if the investigator feels that a second rechallenge at that dose level is medically appropriate. If the subject cannot tolerate idelalisib after 2 rechallenges at Dose Level -1 for the same AE, then the subject should be discontinued from idelalisib treatment.

After an idelalisib dose reduction, the dose need not be re-escalated, even if there is minimal or no toxicity with the reduced dose. However, if the subject tolerates Dose Level -1 of idelalisib for ≥ 4 weeks, then the dose may be increased back to Starting Dose Level, at the discretion of the investigator. Such a re-escalation may be particularly warranted if further evaluation reveals that the AE that led to the dose reduction was not related to idelalisib.

5.2.10. Idelalisib Dose Adjustments

The dose adjustment recommendations and requirements in [Table 5-2](#) are based on the Common Terminology Criteria for Adverse Events (CTCAE) grade of specific toxicities. However, exceptions are expected for subjects who initiate study treatment with low blood counts. Clinical judgment should apply, and in cases of uncertainty, the study medical monitor should be contacted.

The dose modification instructions in [Table 5-2](#) focus on the types of events most commonly associated with idelalisib. The modifications include both recommended and required actions. When a modification is indicated as a recommendation, it serves as a guideline; variations from the recommendation may be warranted based on an investigator's individual judgment in considering potential risks, benefits, and therapeutic alternatives available to each subject.

Table 5-2. Dose Adjustment Guidelines {Gilead Sciences Inc 2014}

NCI CTCAE Grade ^a	Idelalisib
HEMATOLOGICAL ADVERSE EVENTS	
Neutropenia	
Grade ≤2 neutropenia	Recommended Action: Maintain current dose level and schedule.
Grade ≤3 neutropenia	Required Action: Monitor blood counts at least weekly until ANC ≤ Grade 2. Recommended Action: Maintain current dose level and schedule.
Grade 4 neutropenia (or occurrence of neutropenic fever or infection)	Required Action: <ul style="list-style-type: none"> • Withhold idelalisib. • Monitor blood counts at least weekly until ANC ≤ Grade 2 Recommended Action: <ul style="list-style-type: none"> • May resume idelalisib at lower dose level when ANC grade is ≤ Grade 3 • Neutropenia should be managed according to established clinical guidelines.
Thrombocytopenia	
Grade ≤3	Recommended Action: Maintain current dose level and schedule.
Grade 4	Required Action: Withhold idelalisib for bruising or bleeding until Grade ≤3. Recommended Action: May resume idelalisib at initial or reduced dose level at investigator discretion.
NON-HEMATOLOGICAL ADVERSE EVENT	
Rash	
Grade ≤1	Recommended Action: Maintain current dose level and schedule
Grade 2	Recommended Action: Maintain current dose level and schedule
Grade ≥3	Required Action: Withhold idelalisib until Grade ≤1. Recommended Action: Resume at lower dose level or discontinue idelalisib at investigator discretion.
Stevens-Johnson Syndrome (SJS)/Toxic Epidermal Necrolysis (TEN)	
Any Grade	Required Action: <ul style="list-style-type: none"> • Discontinue idelalisib. • Institute treatment per institutional standards. • Interrupt co-administered medications potentially associated with SJS/TEN.
Bowel Perforation	
Any Grade	Required Action: Discontinue idelalisib

NCI CTCAE Grade ^a	Idelalisib
Gastrointestinal Inflammation/Diarrhea^b	
Grade ≤1	<p>Required Action:</p> <ul style="list-style-type: none"> Obtain history of onset and duration of diarrhea, including description, number of stools, stool composition (e.g., watery, bloody, nocturnal), travel history, dietary changes and a medication review to identify possible diarrheogenic agents. Perform physical examination including assessment for fever, dizziness, abdominal pain/cramping, and weakness (e.g., evaluate for sepsis, bowel obstruction, dehydration). <p>Recommended Action: Provide anti-diarrheal agent (eg, loperamide) and maintain current idelalisib dose level and schedule</p>
Grade ≥ 2 diarrhea or colitis (unless clinical diagnosis is established from medical history and physical examination)	<p>Required Action:</p> <ul style="list-style-type: none"> Obtain history of onset and duration of diarrhea, including description of number of stools and stool composition (e.g., watery, bloody, nocturnal), travel history, dietary changes and a medication review to identify possible diarrheogenic agents. Perform physical examination including assessment for fever, dizziness, abdominal pain/cramping, and weakness (e.g., evaluate for sepsis, bowel obstruction, dehydration). For Grade 2 colitis or diarrhea (unless clinical diagnosis is established from medical history and physical examination), perform stool culture for routine pathogens (Salmonella, Shigella, Campylobacter species, test for Clostridium difficile toxin, Rotavirus, Cytomegalovirus (CMV), Adenovirus), ova and parasites (Cryptosporidium parvum, Isospora belli, Enterocytozoon bienersi, Septata intestinalis, Strongyloides, Microsporidia, Entamoeba histolytica, Cyclospora), and Giardia antigen. <p>Recommended Action: Provide anti-diarrheal agent (eg, loperamide) and maintain current idelalisib dose level and schedule</p>
Grade ≥ 3 diarrhea or colitis or persistent Grade 2 diarrhea or colitis without clear etiology	<p>Required Action:</p> <ul style="list-style-type: none"> <u>Dosing:</u> Withhold idelalisib Consider anti-diarrheal (eg, loperamide) and/or addition of anti-inflammatory agent (eg, sulfasalazine, budesonide). Obtain history of onset and duration of diarrhea, including description, number of stools, stool composition (e.g., watery, bloody, nocturnal), travel history, dietary changes and a medication review to identify possible diarrheogenic agents. Perform physical examination including assessment for fever, dizziness, abdominal pain/cramping, and weakness (e.g., evaluate for sepsis, bowel obstruction, dehydration). For Grade 3 colitis or diarrhea (unless clinical diagnosis is established from medical history and physical examination), perform stool culture for routine pathogens (Salmonella, Shigella, Campylobacter species, testing for Clostridium difficile toxin, Rotavirus, Cytomegalovirus (CMV), Adenovirus), ova and parasites (Cryptosporidium parvum, Isospora belli, Enterocytozoon bienersi, Septata intestinalis, Strongyloides, Microsporidia, Entamoeba histolytica, Cyclospora), and Giardia antigen.

NCI CTCAE Grade ^a	Idelalisib
	<p>Recommended Action:</p> <ul style="list-style-type: none"> • Dosing: At Grade ≤ 1, may resume at lower dose level or discontinue idelalisib at investigator discretion. • Endoscopy with biopsy is strongly recommended to assess by immunohistochemistry (IHC) and PCR for CMV, Adenovirus PPD • Provide anti-diarrheal agent (eg, loperamide) and maintain current idelalisib dose level and schedule
Hepatic Adverse Events (elevations in ALT, AST, or bilirubin)	
Grade ≤ 1 (ALT/AST ≤ 3 xULN) (Bilirubin ≤ 1.5 xULN)	Recommended Action: Maintain current dose level and schedule.
Grade 2 (ALT/AST > 3 -5xULN) (Bilirubin > 1.5 - ≤ 3 xULN)	<p>Recommended Action: Maintain current dose level and schedule</p> <p>Recommended Action: Monitor ALT, AST, ALP, and bilirubin at least 1x per week until all abnormalities are Grade ≤ 1; thereafter, maintain current dose level.</p>
Grade 3 (ALT/AST > 5 -20xULN) (Bilirubin > 3 -10xULN)	<p>Recommended Action: Withhold idelalisib.</p> <p>Required Action:</p> <ul style="list-style-type: none"> • Monitor ALT, AST, ALP, and bilirubin at least 1x per week until all abnormalities are Grade ≤ 1. • If bilirubin abnormality is Grade < 3, resume idelalisib at same dose level. If bilirubin abnormality is Grade ≥ 3, resume at lower dose level.
Grade 4 (ALT/AST > 20 xULN) (Bilirubin > 10 xULN)	<p>Required Action:</p> <ul style="list-style-type: none"> • Withhold idelalisib. • Monitor ALT, AST, ALP, and bilirubin at least 1x per week until all abnormalities are Grade ≤ 1. • If bilirubin abnormality is Grade 4, discontinue idelalisib. <p>Recommended Action: If bilirubin abnormality is Grade < 4, resume study drug at lower dose level.</p>
Pneumonitis (dyspnea, cough, hypoxia without obvious infectious cause)	
Grade ≤ 1	Recommended Action: Withhold idelalisib until resolution to baseline. May resume at lower dose level or discontinue idelalisib at investigator discretion.
Grade ≥ 2	<p>Required Action:</p> <ul style="list-style-type: none"> • Discontinue idelalisib. <p>Recommended Action:</p> <ul style="list-style-type: none"> • Consider bronchoscopy to evaluate for PJP, CMV and other organisms (bacterial and viral) • Consider treatment with systemic corticosteroids. • Consider empiric treatment of pneumocystis if bronchoscopy is contraindicated • Upon resolution, may resume idelalisib at lower dose level at investigator discretion and /Gilead medical monitor agreement

NCI CTCAE Grade ^a	Idelalisib
Pneumocystis jirovecii pneumonia (PJP)	
Any Grade	Required Action: Discontinue idelalisib
Unequivocal CMV infection^c	
Any Grade	Required Action: <ul style="list-style-type: none"> Interrupt idelalisib upon unequivocal clinical or laboratory evidence of CMV infection. Treat according to established clinical guidelines. If the benefits of resuming idelalisib are judged to outweigh the risks, consideration should be given to administering pre-emptive CMV therapy.
Other Nonhematological Adverse Events	
Grade ≤2	Recommended Action: Maintain current dose level and schedule
Grade ≥3	Recommended Action: Withhold idelalisib until Grade ≤1. May resume idelalisib at initial or lower dose level or discontinue idelalisib at investigator discretion.

a CTCAE, Version 4.03.

b See section 6.2. and 7.3.2. for additional requirements regarding an AE of diarrhea

c CMV should be diagnosed using clinical or laboratory criteria per established institutional standard

Abbreviations: ALP=alkaline phosphatase, ALT=alanine aminotransferase, ANC=absolute neutrophil count, AST=aspartate aminotransferase, CTCAE=Common Terminology Criteria for Adverse Events, CMV=cytomegalovirus, G-CSF=granulocyte-colony-stimulating factor, NCI=National Cancer Institute, ULN=upper limit of normal

5.3. Prior and Concomitant Medications

If considered necessary for the subject's well-being, drugs for concomitant medical conditions or for symptom management may be given at the discretion of the investigator.

Any concomitant medications prescribed as a therapeutic intervention for or resulting in an AE or SAE during the course of the study and the reason for use should be recorded on the eCRFs.

5.3.1. Anticancer or Experimental Therapies Other than Investigational Treatments

Except for corticosteroids, no other anticancer therapies (including chemotherapy, radiation, antibody therapy, immunotherapy, or other experimental therapies) of any kind are permitted. Subjects are not allowed to participate concurrently in any other therapeutic clinical study.

5.3.2. Antibiotics/ PJP Prophylaxis

5.3.2.1. Infectious Events

Patients with lymphoid cancers receiving idelalisib have developed serious and fatal infections during therapy. Opportunistic infections, most notably *Pneumocystis jirovecii* pneumonia (PJP) and CMV infection, have most frequently occurred within the first 6 months of treatment with idelalisib and are increased in the context of concurrent myelosuppressive therapy such as bendamustine.

Subjects must receive trimethoprim-sulfamethoxazole or other established prophylaxis for PJP throughout the course of idelalisib treatment, and for 2 to 6 months following the last dose of idelalisib. Prophylaxis must continue until the CD4+ T-cell count is documented to be >200 cells/mcL after idelalisib treatment ends. Subjects must permanently discontinue idelalisib upon diagnosis of PJP.

CMV surveillance for active disease (quantitative PCR or PP65 antigen) must be conducted approximately every 4 weeks throughout the course of idelalisib treatment. CMV viral load testing should be performed from the same specimen type whenever possible and caution should be exercised when comparing CMV viral load results across different testing centers. If unequivocal clinical or laboratory evidence of CMV infection is present, the subject must interrupt idelalisib treatment and undergo effective antiviral treatment according to established clinical guidelines. If the benefits of resuming idelalisib are judged to outweigh the risks, consideration should be given to administering pre-emptive CMV therapy.

In high-risk subjects (history of recurrent infection, allogeneic transplant, treatment with alemtuzumab, hypogammaglobulinemia) other infection prophylaxis should be considered per consensus guidelines. Administration of intravenous immunoglobulin is permitted per standard institutional practice {[Raanani et al 2009](#)}. For subjects who develop an infection, appropriate medical therapy should be instituted in a timely manner.

Trimethoprim sulfamethoxazole is rated a Pregnancy category C agent. In rats, oral doses of 533 mg/kg or 200 mg/kg produced teratologic effects manifested mainly as cleft palates. One survey found no congenital abnormalities in 35 children whose mothers had received oral sulfamethoxazole and trimethoprim at the time of conception or shortly thereafter. Because sulfamethoxazole and trimethoprim may interfere with folic acid metabolism it should be used during pregnancy only if the potential benefit justifies the potential risk to the fetus.

Dapsone is rated a Pregnancy Category C agent. Extensive, but uncontrolled experience and two published surveys on the use of Dapsone in pregnant women have not shown that Dapsone increases the risk of fetal abnormalities if administered during all trimesters of pregnancy or can affect reproduction capacity. Because of the lack of animal studies or controlled human experience, Dapsone should be given to a pregnant woman only if clearly needed. Dapsone is excreted in breast milk in substantial amounts. Hemolytic reactions can occur in neonates. Because of the potential for tumorigenicity shown for Dapsone in animal studies a decision should be made whether to discontinue nursing or discontinue the drug taking into account the importance of drug to the mother.

Atovaquone is rated a Pregnancy Category C agent. Atovaquone is teratogenic and did not cause reproductive toxicity in rats at plasma concentrations up to 2 to 3 times the estimated human exposure. Atovaquone can cause maternal toxicity in rabbits at plasma concentrations that were approximately one half the estimated human exposure. Mean fetal body lengths and weights were decreased and there were higher numbers of early resorption and post-implantation loss per dam. It is not clear whether these effects are caused by atovaquone directly or are secondary to maternal toxicity. Concentrations of atovaquone in rabbit fetuses averaged 30% of the concurrent

maternal plasma concentrations. There are no adequate and well-controlled studies in pregnant women. Atovaquone should be used during pregnancy only if the potential benefit justifies the potential risk to the fetus. It is not known whether atovaquone is excreted into human milk. Because many drugs are excreted into human milk, caution should be exercised when Atovaquone is administered to a nursing woman. In a rat study, atovaquone concentrations in the milk were 30% of the concurrent atovaquone concentrations in the maternal plasma.

Aerosolized Pentamidine (NebuPent) is a Pregnancy Category C agent. There are no adequate and well controlled studies of NebuPent in pregnant women. One literature report indicated that intravenously administered pentamidine in pregnant rats at 4 mg/kg/day was embryolethal; teratogenicity was not observed in this study. It is unknown whether pentamidine administered via the aerosolized route crosses the placenta at clinically significant concentrations. It is not known whether NebuPent can cause fetal harm when administered to a pregnant woman. NebuPent should be given to a pregnant woman only if clearly needed. It is not known whether NebuPent is excreted in human milk. NebuPent should not be given to a nursing mother unless the potential benefits are judged to outweigh the unknown risks.

5.3.3. Antidiarrheals

As needed, subjects may be prescribed loperamide (Imodium[®] or others) or diphenoxylate and atropine (Lomotil[®]) to control diarrheal symptoms.

5.3.4. Corticosteroids

Subjects may receive topical, inhaled, enteric, or systemic corticosteroids while on study.

5.3.5. Granulocyte Colony-Stimulating Factors and Erythropoietin

Granulocyte-macrophage colony-stimulating factor (GM-CSF) should not be administered given the potential for GM-CSF-related inflammatory symptoms.

G-CSF (filgrastim, PEG-filgrastim, lenograstim) may be administered in response to Grade 4 neutropenia or neutropenic complications; (see [Table 5-2](#)).

While erythropoietic agents (eg, erythropoietin or darbepoetin) may be administered for Grade ≥ 3 anemia, their use in this study is discouraged given the potential to confound assessments of improvements in bone marrow function related to idelalisib.

5.3.6. Drugs that Alter CYP3A-Dependent Metabolism

Idelalisib is metabolized to its major metabolite **PPD** via aldehyde oxidase and cytochrome P450 3A (CYP3A). Idelalisib also undergoes minor metabolism by UDP glucuronosyltransferase 1-4 (UGT1A4). The AUC of idelalisib was increased 1.8 fold when idelalisib was coadministered with a strong CYP3A inhibitor. Therefore, if subjects are taking concomitant strong CYP3A inhibitors, the subject should be monitored closely for signs of idelalisib toxicity and the dose modifications for adverse reactions should be followed in the event of toxicity (see [Table 5-2](#)).

Additionally, idelalisib exposures are approximately 75% lower when coadministered with rifampin, a highly potent inducer of CYP3A. Therefore, avoid coadministration of strong inducers of CYP3A (rifampin, carbamazepine, phenytoin, and St. John's wort) with idelalisib.

5.3.7. Drugs that undergo CYP3A-Dependent Metabolism

The major metabolite of idelalisib, PPD is a reversible and time dependent inhibitor of CYP3A; accordingly, coadministration of idelalisib with midazolam, a probe CYP3A substrate, resulted in a ~5-fold increase in midazolam systemic exposure (AUC). Coadministration of drugs that are narrow therapeutic index CYP3A substrates with idelalisib may result in an increase in their systemic exposures (eg, antiarrhythmics, calcium channel blockers, benzodiazepines, certain HMG-CoA reductase inhibitors, phosphodiesterase-5 [PDE5] inhibitors, warfarin). Avoid coadministration of drugs that are narrow therapeutic index CYP3A substrates (eg, alfentanil, cyclosporine, sirolimus, tacrolimus, cisapride, pimozide, fentanyl, quinidine, ergotamine, dihydroergotamine, astemizole, terfenadine) with idelalisib.

5.3.8. Immunization

Because of its actions to inhibit PI3K δ -dependent B-cell function, high doses of idelalisib can impair primary or secondary responses to immunization in animals.

The specific clinical relevance of these findings with idelalisib is unknown. However, for subjects who are at substantial risk of an infection (eg, influenza) that might be prevented by immunization, consideration should be given to providing the vaccine prior to initiation of study therapy.

Of note, the safety of immunization with live viral vaccines following idelalisib therapy has not been studied and vaccination with live virus vaccines during study treatment is not recommended.

5.3.9. Ultraviolet Exposure

While nonclinical findings suggest the hypothetical potential for phototoxicity in humans, available clinical data do not reveal a photosafety concern. Although specific clinical correlates for these nonclinical data are not available, investigators and study subjects should be observant for the possibility that study participants may have exaggerated sunburn reactions (eg, burning, erythema, exudation, vesicles, blistering, edema) involving areas of skin exposed to ultraviolet light.

5.3.10. Surgery

There are no known effects of idelalisib on coagulation or wound healing. Pending receipt of additional information and considering the subject's current platelet counts, idelalisib may be continued in the peri-procedural period in subjects who require surgery or invasive procedures.

5.4. Accountability for Idelalisib

The disposition of all idelalisib should be documented from the time of receipt at the site through subject dispensing and return.

Study personnel must ensure that idelalisib is kept in a secure locked area with access limited to authorized personnel. The idelalisib must not be used outside the context of this protocol. Under no circumstances should the investigator or site personnel supply idelalisib to other investigators or clinics, or allow the idelalisib to be used other than as directed by this protocol.

The investigator and/or the responsible site personnel must maintain accurate records of the receipt of idelalisib shipped by Gilead Sciences or its designee, including, but not limited to, the date received, lot number, amount received, and the disposition of all idelalisib. Upon receipt of a drug shipment, the shipment must be logged into the idelalisib accountability records, these records must also be maintained to include the subject number to whom the idelalisib was dispensed and the date, quantity and lot number of the idelalisib dispensed.

Depending upon the decision of Gilead Sciences, remaining unused idelalisib supply will be returned to Gilead Sciences or its designee after the study is completed or will be discarded or destroyed at the clinical site. If the idelalisib is discarded or destroyed at the clinical site, standard institutional policy should be followed. Records documenting the date of idelalisib shipping or destruction, relevant lot numbers, and amount shipped or destroyed should be maintained.

5.4.1. Overdose Precautions

In Phase 1 studies, an MTD for idelalisib was not reached when administering the drug continuously at dose levels of 350 mg/dose BID (700 mg per day) {[Coutre et al 2011](#), [Kahl et al 2011](#)}. However, in this protocol, an overdose is defined as administration of more than the prescribed daily dose (ie, >300 mg in a single day).

The Gilead Sciences medical monitor should be contacted if an idelalisib overdose occurs. Cases of idelalisib overdose will result in specific reporting requirements.

5.4.2. Inadvertent Exposure and Spill Precautions

Based on available data from nonclinical studies, idelalisib does not appear to be acutely toxic, genotoxic, or irritative at levels that are likely to result from inadvertent exposure to the contents of broken tablets. However, personnel handling the drug should use reasonable precautions to avoid eye contact, skin contact, inhalation, or ingestion of the idelalisib product. For further information regarding inadvertent exposure and spill precautions, please consult the idelalisib investigator brochure.

5.4.3. Investigational Medicinal Product Return or Disposal

Subjects will be instructed to return any unused idelalisib in the original container at post treatment study visits. Returned medication will be reconciled by the investigator in order to monitor the subject's compliance with the medication regimen. When possible, all idelalisib returned by the subject should be retained for review by the study site monitor prior to return to Gilead Sciences or destruction.

5.5. Discontinuation from Study

Subject study participation may be ended due to any of the follow reasons:

- Withdrawal of consent
- Objective evidence of disease progression.
- Unacceptable toxicity or unable to tolerate a second rechallenge for the same AE.
- Any subject who becomes pregnant or begins breastfeeding.
- Initiation of non-protocol specified anticancer therapy.
- Noncompliance with idelalisib administration, study procedures, or study requirements.
- The investigator may discontinue idelalisib, if it is not in the subject's best interest to continue.
- Any subject who is lost to follow-up.
- Death
- Discontinuation of study by the Sponsor, a regulatory agency, or an EC
- Any subject who is diagnosed with any grade SJS or TEN, Grade ≥ 2 pneumonitis, or any grade PJP.
- Any subject whose benefit-risk profile is not deemed positive by the investigator should discontinue study drug.

6. STUDY PROCEDURES

The study procedures to be conducted for each subject enrolled in the study are presented in tabular form in [Table 6-1](#) and described in the text that follows.

The investigator must document any deviation from protocol procedures and notify the sponsor or contract research organization (CRO).

6.1. Subject Enrollment

6.1.1. Subject Recruitment

This study will enroll subjects receiving GS-9820 in Study GS-US-315-0102 at the time of study closure who have had objective evidence of clinical benefit defined as at least stable disease on imaging assessed by the IRC and no toxicities prior to enrollment in this study that would preclude initiating therapy with idelalisib. The study sponsor will post a description of the study on the ClinicalTrials.gov website.

6.1.2. Subject Compensation for Participation

Subjects will not be paid for participation in the study other than medical care that may be provided. Payments for such items as lost wages, disability, discomfort due to injury, or meals obtained while waiting at the clinical research center will not be provided. Through the informed consent process, study candidates will be notified that their insurance company could be charged for standard care that is a component of this research study and that subjects may be responsible for co-payments and deductible payments that are typical for their insurance coverage.

6.1.3. Screening Visit

The investigator must inform each prospective subject of the nature of the study, explain the potential risks, and obtain written informed consent from the subject and/or a legal guardian prior to performing any study-related screening procedures.

From the time of obtaining informed consent through the first administration of investigational medicinal product, record all serious adverse events (SAEs), as well as any adverse events related to protocol-mandated procedures on the adverse events case report form (CRF/eCRF). All other untoward medical occurrences observed during the screening period, including exacerbation or changes in medical history are to be captured on the medical history CRF/eCRF. See Section 7 Adverse Events and Toxicity Management for additional details.

6.2. Treatment Assessments

From the time of obtaining informed consent through the first administration of investigational medicinal product, record all SAEs, as well as any non-serious all grade AEs on the AE case report form (eCRF). All other untoward medical occurrences observed during the screening

period, including exacerbation or changes in pre-existing conditions are considered medical history (not collected for this study). See Adverse Events and Toxicity Management (Section 7) for additional details.

While on study, the subject will return at regular intervals for the following procedures:

- Evaluation of disease status per standard of care
- Laboratory lab tests as outlined under section 6.2.2.
- Recording of all grade AEs and all SAEs
 - For an AE of Diarrhea or Colitis:
 1. Obtain history of onset and duration of diarrhea, including description of number of stools and stool composition (eg, watery, bloody, nocturnal), travel history, dietary changes and a medication review to identify possible diarrheogenic agents
 2. Perform physical examination including assessment for fever, dizziness, abdominal pain/cramping, and weakness (ie, evaluate for sepsis, bowel obstruction, dehydration)
- Return of used drug supplies and dispensing of new idelalisib supply

The specific study procedures to be conducted for each subject enrolled in the study are presented in Table 7-1 and are described in the sections that follow.

6.2.1. Clinical Evaluation

While on study, the subject will be followed for disease status according to standard of care. At each study visit the subject's disease status will be assessed. If no change in disease status is identified and the subject is dispensed additional idelalisib, the most recent prior response documented for the study will be recorded.

6.2.2. Laboratory Assessments

Blood samples for ALT, AST, total bilirubin will be collected at Screening, Day 1, Weeks 4, 8, 12, 16, 168, every 12 weeks thereafter, and the End of Study (EOS) Visit.

Blood samples for CMV will be collected at Screening and every 4 weeks thereafter throughout study participation.

Blood samples for ANC will be collected at Screening and every 2 weeks through Week 24.

Blood samples for Pneumococcal, Haemophilus Influenzae Type B (Hib), and Tetanus titers will be taken at screening

Blood samples for immune-monitoring will be collected at Screening, Weeks 4, 12 and every 12 weeks thereafter, and the EOS Visit:

- Lymphocyte subset panel using flow cytometry (immunophenotyping)
- Quantitative immunoglobulins: IgG, IgM, IgA
- Serum CH50 level

6.2.2.1. Evaluation for Gastrointestinal Events/Colitis

For Grade 2 colitis and diarrhea (unless clinical diagnosis is established from medical history and physical examination), the following testing is required:

- Stool culture for routine pathogens (Salmonella, Shigella, Campylobacter species, Clostridium difficile toxin, Rotavirus, Cytomegalovirus, Adenovirus)
- Stool for Ova and Parasites (Cryptosporidium parvum, Isospora belli, Enterocytozoon bieneusi, Septata intestinalis, Strongyloides, Microsporidia, Entamoeba histolytica, Cyclospora), Giardia antigen

For Grade ≥ 3 or persistent Grade 2 colitis or diarrhea without clear etiology (eg, clostridium difficile enterocolitis), endoscopy with biopsy is strongly recommended. All biopsy samples should include immunohistochemistry (IHC) and PCR for CMV, Adenovirus.

PPD

6.2.2.2. Differentiation Between Small-bowel and Large-bowel Diarrhea

Differentiation between small-bowel and large-bowel diarrhea on a clinical basis is recommended. If unclear, consider upper and lower tract endoscopy with biopsy.

- Small bowel diarrhea is characterized by large volume diarrhea (more than one per day), possibly associated dehydration weight loss and paraumbilical pain. Consider an endoscopic small-bowel biopsy and evaluate other etiologies such as celiac disease.
- Large-bowel diarrhea may present with lower pelvic pain, tenesmus, generally smaller stool volumes with gross blood frequently found in the stool. Consider a colonoscopic evaluation and biopsy.

6.3. End of Study

Subjects will be withdrawn from this study if they develop progressive disease, unacceptable toxicity related to idelalisib, withdraw consent, are noncompliant, or are lost to follow up or die. In this event, the following procedures should be performed:

- Return of used and unused drug supply
- Recording of all Grade AEs and all SAEs
- Investigator Response Assessment
- Laboratory assessments as outlined in [Table 6-1](#)
- Recording of the reason for withdrawal
- Deaths occurring within 30 days following the last dose of idelalisib, even if occurring after the End of Study Visit, will be captured.

Table 6-1. Schedule of Study Procedures

Period	Screen	Treatment															
Visit	1	2	3	4	5	6	7	8	9	10	11	12	13	14	15+		End of study
Week	-4	0	2	4	6	8	10	12	14	16	18	20	22	24	Q4 weeks	Q12 weeks	
Study Day	Within -28 days	1	14	28	42	52	70	84	98	112	126	140	154	168			
Visit Window			±2	±2	±2	±2	±2	±2	±2	±2	±2	±2	±2	±2	±7	±7	
Informed consent	X																
Serum β-HCG ^a	X																
Pneumococcal, Hib, Tetanus titers	X																
ALT/AST/total bilirubin	X	X		X		X		X		X				X		X	X
Urine pregnancy test ^a		X		X		X		X		X				X		X	X
ANC ^b	X	X	X	X	X	X	X	X	X	X	X	X	X	X			
CMV surveillance	X			X		X		X		X		X		X	X ^c		
Immune Monitoring	X			X				X						X		X	X
Assess adverse events and SAEs ^d		X		X		X		X		X				X		X	X
Record concomitant medications ^e		X		X		X		X		X				X		X	X
Idelalisib dispensing/accounting		X		X		X		X		X				X		X	X
Investigator response assessment ^f	X			X		X		X		X				X		X	X

Abbreviations: β-HCG=beta human chorionic gonadotropin, ALT=alanine aminotransferase, AST=aspartate aminotransferase, Hib = Haemophilus Influenzae Type B

a For women of child bearing potential; Serum β-HCG to be collected to be collected at screening, urine pregnancy test to be collected at visits from first dose of idelalisib to EOS

b Absolute neutrophil count (ANC) will be monitored at least every two weeks for the first 24 weeks of idelalisib treatment

c CMV surveillance must be conducted approximately every 4 weeks throughout the course of idelalisib treatment

d For an AE of Diarrhea/Colitis: 1) Obtain history of onset and duration of diarrhea, including description of number of stools and stool composition, travel history, dietary changes and a medication review to identify possible diarrheogenic agents and 2) Perform physical examination including assessment for fever, dizziness, abdominal pain/cramping, and weakness

e Concomitant medications only collected if it is related to an AE

f Record investigator response assessment if obtained per standard of care

7. ADVERSE EVENTS AND TOXICITY MANAGEMENT

7.1. Definitions of Adverse Events, Adverse Reactions, and Serious Adverse Events

7.1.1. Adverse Events

An adverse event (AE) is any untoward medical occurrence in a clinical study subject administered a medicinal product, which does not necessarily have a causal relationship with the treatment. An AE can therefore be any unfavorable and/or unintended sign, symptom, or disease temporally associated with the use of a medicinal product, whether or not considered related to the medicinal product. AEs may also include pre- or post-treatment complications that occur as a result of protocol specified procedures, lack of efficacy, overdose, drug abuse/misuse reports, or occupational exposure. Preexisting events that increase in severity or change in nature during or as a consequence of participation in the clinical study will also be considered AEs.

An AE does not include the following:

- Lymphocytosis
- Laboratory abnormalities not requiring clinical intervention or further investigation. Such abnormalities will be captured as part of overall laboratory monitoring.
- Medical or surgical procedures such as surgery, endoscopy, tooth extraction, and transfusion. The condition that led to the procedure may be an adverse event and must be reported.
- Pre-existing diseases, conditions, or laboratory abnormalities present or detected before the screening visit that do not worsen
- Situations where an untoward medical occurrence has not occurred (eg, hospitalization for elective surgery, social and/or convenience admissions)
- Overdose without clinical sequelae
- Any medical condition or clinically significant laboratory abnormality with an onset date before the consent form is signed and not related to a protocol-associated procedure is not an AE. It is considered to be pre-existing and should be documented on the medical history CRF.

7.1.2. Serious Adverse Events

A **serious adverse event** (SAE) is defined as an event that, at any dose, results in the following:

- Death
- Life-threatening (Note: The term “life-threatening” in the definition of “serious” refers to an event in which the subject was at risk of death at the time of the event; it does not refer to an event that hypothetically might have caused death if it were more severe.)

- In-patient hospitalization or prolongation of existing hospitalization
- Persistent or significant disability/incapacity
- A congenital anomaly/birth defect
- A medically important event or reaction: such events may not be immediately life-threatening or result in death or hospitalization but may jeopardize the subject or may require intervention to prevent one of the other outcomes constituting SAEs. Medical and scientific judgment must be exercised to determine whether such an event is a reportable under expedited reporting rules. Examples of medically important events include intensive treatment in an emergency room or at home for allergic bronchospasm; blood dyscrasias or convulsions that do not result in hospitalization; and development of drug dependency or drug abuse. For the avoidance of doubt, infections resulting from contaminated medicinal product will be considered a medically important event and subject to expedited reporting requirements.

7.1.3. Clinical Laboratory Abnormalities and Other Abnormal Assessments as Adverse Events or Serious Adverse Events

Laboratory abnormalities without clinical significance are not recorded as AEs or SAEs. However, laboratory abnormalities (eg, clinical chemistry, hematology, and urinalysis) that require medical or surgical intervention or lead to idelalisib interruption, modification, or discontinuation must be recorded as an AE, as well as an SAE, if applicable. In addition, laboratory or other abnormal assessments (eg, electrocardiogram, x-rays, vital signs) that are associated with signs and/or symptoms must be recorded as an AE or SAE if they meet the definition of an AE or SAE as described in Sections 7.1.1 and 7.1.2. If the laboratory abnormality is part of a syndrome, record the syndrome or diagnosis (eg, anemia), not the laboratory result (ie, decreased hemoglobin).

7.2. Assessment of Adverse Events and Serious Adverse Events

The investigator or qualified sub-investigator is responsible for assessing AEs and SAEs for causality and severity, and for final review and confirmation of accuracy of event information and assessments.

7.2.1. Assessment of Causality for Idelalisib and Procedures

The investigator or qualified sub-investigator is responsible for assessing the relationship to idelalisib therapy using clinical judgment and the following considerations:

- **No:** Evidence exists that the adverse event has an etiology other than idelalisib. For SAEs, an alternative causality must be provided (eg, pre-existing condition, underlying disease, intercurrent illness, or concomitant medication).
- **Yes:** There is reasonable possibility that the event may have been caused by the investigational medicinal product.

It should be emphasized that ineffective treatment should not be considered as causally related in the context of adverse event reporting.

The relationship to study procedures (eg, invasive procedures such as venipuncture or biopsy) should be assessed using the following considerations:

- **No:** Evidence exists that the adverse event has an etiology other than the study procedure.
- **Yes:** The adverse event occurred as a result of protocol procedures, (eg., venipuncture)

7.2.2. Assessment of Severity

The severity of AEs will be graded using the CTCAE, Version 4.03 and available at: http://evs.nci.nih.gov/ftp1/CTCAE/CTCAE_4.03_2010-06-14_QuickReference_8.5x11.pdf

If a CTCAE criterion does not exist, the investigator should use the grade or adjectives: Grade 1 (mild), Grade 2 (moderate), Grade 3 (severe), Grade 4 (life-threatening), or Grade 5 (fatal) to describe the maximum intensity of the adverse event. For purposes of consistency with the CTCAE, these intensity grades are defined in [Table 7-1](#).

Table 7-1. Grading of Adverse Event Severity

Grade	Adjective	Description
Grade 1	Mild	Sign or symptom is present, but it is easily tolerated, is not expected to have a clinically significant effect on the subject's overall health and well-being, does not interfere with the subject's usual function, and is not likely to require medical attention.
Grade 2	Moderate	Sign or symptom causes interference with usual activity or affect clinical status, and may require medical intervention.
Grade 3	Severe	Sign or symptom is incapacitating or significantly affects clinical status and likely requires medical intervention and/or close follow-up.
Grade 4	Life-threatening	Sign or symptom results in a potential threat to life.
Grade 5	Fatal	Sign or symptom results in death.

The distinction between the seriousness and the severity of an adverse event should be noted. Severe is a measure of intensity; thus, a severe reaction is not necessarily a serious reaction. For example, a headache may be severe in intensity, but would not be classified as serious unless it met one of the criteria for serious events listed in [Section 7.1.2](#).

7.3. Evaluation, Intervention, and Drug Discontinuation for Specific Adverse Events or Conditions

7.3.1. Dermatological Events (Idelalisib)

Subjects receiving idelalisib with \geq Grade 3 rash have generally presented with a maculopapular rash on the trunk and extremities that is occasionally associated with fever and/or pruritus and responded to treatment with diphenhydramine and/or topical or oral corticosteroids.

For subjects who develop Grade ≥ 3 rash for which an underlying etiology cannot be identified (e.g., infection, co-suspect drug), study drug must be interrupted. Severe cutaneous reactions, including fatal events of Stevens-Johnson syndrome (SJS) and toxic epidermal necrolysis (TEN), have been reported in subjects receiving idelalisib. Assessment of potential causal association between idelalisib and the occurrence of SJS or TEN has been confounded by the coadministration of antineoplastic agents (e.g., bendamustine, rituximab) and/or other concomitant medications known to be associated with SJS or TEN (e.g., allopurinol). If SJS or TEN is suspected, idelalisib and all coadministered medications associated with SJS or TEN should be interrupted and the subject treated accordingly.

Subjects should be monitored for the development of SJS, TEN, or other severe cutaneous reactions and idelalisib treatment should be discontinued if such events occur.

7.3.2. Gastrointestinal Events

Isolated cases of gastrointestinal inflammation (eg, stomatitis, colitis, cecitis) have been noted in subjects receiving idelalisib. Rare cases of gastrointestinal perforation have occurred, generally in the setting of occult carcinoma, mesenteric embolus or diverticular disease. Study treatment (idelalisib/placebo) must be discontinued in subjects who experience bowel perforation

Cholangitis manifest as hyperbilirubinemia out of proportion to serum transaminase elevations has been observed. While disease-related factors, neutropenia, toxicity from prior therapies, effects of ongoing supportive care, or pre-existing cholelithiasis may have initiated such events, it is possible that idelalisib played a contributory role. In such subjects, rechallenge with idelalisib has been possible and has not been associated with other severe adverse events. Subjects who have developed evidence of enteritis during idelalisib therapy have been successfully treated with antidiarrheals (eg, loperamide) and with enteric steroidal (eg, budesonide) or non-steroidal (eg sulfasalazine [Azulfidine[®]]) anti-inflammatory agents and have been able to continue or resume idelalisib.

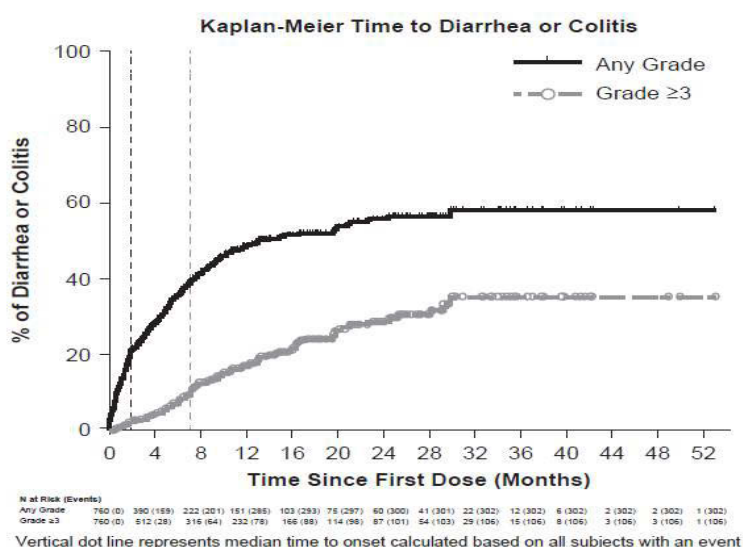
For study subjects who develop severe abdominal pain the possibility of a bowel obstruction or perforation should be considered. Appropriate clinical and radiographic examination should be performed and supportive care or surgical intervention should be considered. Upon recovery, rituximab may be resumed.

7.3.2.1. Investigation for Idelalisib Late Onset or Severe Diarrhea/Colitis

See CTCAE Version 4.03 for definitions of colitis and diarrhea.

Among idelalisib-treated patients who reported diarrhea or colitis, the median time to onset of any grade diarrhea or colitis was 1.9 months (range, 0.0–29.8), of grade 1 or 2 was 1.5 months (range, 0.0–15.2) and of grade 3 or 4 was 7.1 months (range, 0.5–29.8). Kaplan–Meier curves of time to onset of diarrhea or colitis are shown for all idelalisib- treated patients in [Figure 7-1](#) {Coutre et al 2015}.

Figure 7-1. Kaplan-Meier Time to Diarrhea or Colitis



Idelalisib-associated severe diarrhea responds poorly to antimotility agents however, median time to resolution ranged between 1 week and 1 month across trials following interruption of idelalisib treatment and, in some instances, initiation of corticosteroid treatment {Gilead Sciences Inc 2014}.

7.3.3. Hepatic Events

Transaminase Elevations: Consistent with observations in a dog toxicology study, reversible asymptomatic ALT/AST increases were also observed early in the idelalisib program in phase 1 studies (101-02 and 101-07) in subjects with hematologic malignancies. Transaminase elevations generally occurred within 4 to 12 weeks of drug initiation, and resolved spontaneously over a period of 2 to 4 weeks with drug being continued for Grade 1 and 2 elevations and drug withheld for Grade 3 or 4 elevations until resolution. These early observations have been consistent with the ongoing experience with idelalisib treatment and transaminase elevations are now well characterized as most frequently asymptomatic, transient and occurring within the first 3 months of treatment.

Grade 1 or 2 elevations commonly resolve despite continued idelalisib treatment and Grade 3 or 4 elevations can be managed by withholding idelalisib. Successful rechallenge after resolution at either the same or lower dose level of idelalisib has been achieved in the majority of subjects. There has been no evidence of impaired synthetic function. Close monitoring of hepatic laboratory tests during therapy is important to allow for appropriate idelalisib interruption and reinstitution so that subjects may continue with study drug treatment.

7.3.4. Hematological and Immunological Events

In the Phase 1 experience with idelalisib in patients with NHL and CLL, subjects with Grade ≥ 3 neutropenia, anemia, and/or thrombocytopenia were enrolled to clinical trials. Decreased levels of neutrophil counts, hemoglobin, or platelet counts during idelalisib administration were largely due to minor fluctuations in these parameters among subjects with pre-existing hematological abnormalities due to disease or prior therapy. Thus, idelalisib did not appear to induce overt myelosuppression. Obvious patterns of drug-mediated reductions in circulating CD4+ lymphocyte counts or suppression of serum IgG levels were also not observed.

Treatment-emergent Grade 3 or 4 neutropenia events, including febrile neutropenia, have occurred in subjects treated with idelalisib. All subjects should have their blood counts monitored at least every 2 weeks for the first 6 months of idelalisib treatment. For subjects who develop Grade 3 neutropenia, blood counts must be monitored at least weekly. For subjects who develop Grade 4 neutropenia, idelalisib must be interrupted and blood counts monitored at least weekly until ANC is ≥ 0.5 Gi/L, at which point, idelalisib may be resumed at a lower dose level. Neutropenia should be managed according to established clinical guidelines.

No modification of any drug for changes in circulating CD4+ counts or Ig levels is planned.

7.3.5. Pulmonary Events

Documented bacterial, fungal, viral, and pneumocystis pneumonias have been observed in patients receiving idelalisib, primarily in patients with CLL. Some study subjects receiving idelalisib alone or in combination have developed evidence of pneumonitis without documented pulmonary infection.

Given the potential for infectious or drug-related pulmonary adverse events, clinicians should be particularly observant for evidence of respiratory events in subjects participating in this trial. Subjects who describe pulmonary symptoms (eg, dyspnea on exertion, cough, shortness of breath); manifest a decline from baseline of $\geq 5\%$ in oxygen saturation, or demonstrate evidence of pulmonary inflammation (eg, focal or diffuse interstitial pattern or ground-glass opacities on chest CT) should be evaluated. Potential bacterial, fungal, or viral etiologies should be assessed. Noninfectious etiologies such as pulmonary edema or thromboembolism should also be considered.

As appropriate for the clinical situation and culture results, subjects should be treated empirically or given specific antibiotics, antifungals, or antiviral agents for a cultured organism. Supportive care, including oxygen or mechanical ventilation, should be provided as necessary.

For subjects with suspected pneumonitis (eg, onset of cough, dyspnea, hypoxia and/or a diffuse interstitial pattern or ground-glass opacities on chest imaging without obvious infectious etiology), idelalisib should be interrupted (or discontinued if pneumonitis is Grade ≥ 2). Supportive care, including oxygen or mechanical ventilation, should be considered and provided as necessary. Consider bronchoscopy to evaluate for PJP, CMV and other organisms (bacterial and viral). Consider treatment with systemic corticosteroids. Consider empiric treatment of pneumocystis if bronchoscopy is contraindicated. Upon resolution, may resume idelalisib at lower dose level at investigator discretion and Gilead medical monitor agreement.

7.3.6. Secondary Malignancies

Subjects receiving idelalisib for CLL or iNHL have developed pre-malignant and secondary malignant diseases, such as basal cell carcinoma, myelodysplastic syndrome, myeloproliferative disorders, and more aggressive lymphoid malignancies (eg, have had Richter transformation). Generally this has occurred in subjects who have received multiple previous lines of therapy and when idelalisib is combined with other therapies such as rituximab or bendamustine. The specific association of the therapeutic agents with these types of events has not been determined.

There are reports of pre-malignant and malignant diseases that have developed in subjects who have been treated with bendamustine, including myelodysplastic syndrome, myeloproliferative disorders, acute myeloid leukemia, and bronchial carcinoma. The specific association of the therapeutic agents with these types of events has not been determined.

7.3.7. Tumor Lysis Syndrome

Tumor lysis syndrome has not been observed with idelalisib monotherapy.

When idelalisib is combined with other agents known to induce tumor lysis syndrome, prophylaxis with agents such as allopurinol may be considered. The benefit versus risk of prophylactic agents must be carefully considered given a potential of increased risk of severe skin toxicity.

Subjects with tumor lysis syndrome should receive rapid reversal of hyperkalemia, intravenous hydration, antihyperuricemic agents, and appropriate cardiac and renal support, including dialysis as indicated. Upon recovery to baseline functioning, such subjects should continue study treatment including study drug (idelalisib/placebo).

7.4. Investigator Requirements and Instructions for Reporting Adverse Events and Serious Adverse Events to Gilead

All SAEs, regardless of cause or relationship, that occur after the subject first consents to participate in the study (ie, signing the informed consent) and throughout the duration of the study, including the protocol-required post treatment follow-up period, must be reported to the eCRF database and Gilead Drug Safety and Public Health (DSPH) or designee as instructed. This also includes any SAEs resulting from protocol-associated procedures performed from screening onwards.

All AEs, regardless of cause or relationship, that occur from initiation of study medication until 30 days after last administration of idelalisib must be reported to the eCRF database as instructed.

Any SAEs and deaths that occur after the post treatment follow-up visit but within 30 days of the last dose of idelalisib, regardless of causality, should also be reported.

All AEs should be followed up until resolution if possible. If by the last day on study (including the off-study medication follow-up period) the AE has not resolved, then the AE will be followed up until the investigator and/or Gilead Sciences determine that the subject's condition is stable. However, Gilead Sciences may request that certain AEs be followed until resolution.

Investigators are not obligated to actively seek SAEs after the 30 day period. However, if the investigator learns of any SAEs that occur after study participation has concluded and the event is deemed relevant to the use of idelalisib, he/she should promptly document and report the event to Gilead DSPH or designee as instructed.

All AEs and SAEs will be recorded in the eCRF database within the timelines outlined in the eCRF completion guidelines.

7.4.1. Serious Adverse Event (eSAE) Reporting Process

Site personnel record the SAE on the paper serious adverse event reporting form and submit via fax to Gilead DSPH within 24 hours.

All AEs and SAEs will be recorded in the CRF/eCRF database within the timelines outlined in the CRF/eCRF completion guideline.

For fatal or life-threatening events, copies of hospital case reports, autopsy reports, and other documents are also to be submitted by e-mail or fax when requested and applicable.

Transmission of such documents should occur without personal subject identification, maintaining the traceability of a document to the subject identifiers.

Additional information may be requested to ensure the timely completion of accurate safety reports.

Any medications necessary for treatment of the SAE must be recorded onto the concomitant medication section of the subject's CRF/eCRF and the event description section of the SAE form.

7.5. Gilead Reporting Requirements

Depending on relevant local legislation or regulations, including the applicable US FDA Code of Federal Regulations, the EU Clinical Trials Directive (2001/20/EC) and relevant updates, and other country-specific legislation or regulations, Gilead may be required to expedite to worldwide regulatory agencies reports of SAEs, serious adverse drug reactions (SADRs), or suspected unexpected serious adverse reactions (SUSARs). In accordance with the EU Clinical Trials Directive (2001/20/EC), Gilead or a specified designee will notify worldwide regulatory agencies and the relevant IEC in concerned Member States of applicable SUSARs as outlined in current regulations.

Assessment of expectedness for SAEs will be determined by Gilead using reference safety information specified in the investigator's brochure or relevant local label as applicable.

All investigators will receive a safety letter notifying them of relevant SUSAR reports associated with idelalisib. The investigator should notify the IEC of SUSAR reports as soon as is practical, where this is required by local regulatory agencies, and in accordance with the local institutional policy.

7.5.1. Reporting of Adverse Events Relating and Other Anticipated Medical Events in the Study Population

Given the endpoints of the study and in order to maintain the integrity of the study, the following events that are assessed as unrelated to idelalisib will not be considered SAEs:

- Progression of lymphoid malignancy
- Death related to progression of lymphoid malignancy
- Disease progression and death from disease progression should be reported as SAEs by the investigator only if it is assessed that the idelalisib caused or contributed to the disease progression (ie, by a means other than lack of effect). Unrelated disease progression should be captured on the eCRF.

These will be reported, as appropriate, in the final clinical study report and in any relevant aggregate safety reports.

7.5.2. Toxicity Management

See [Table 5-2](#) for more information related to recommended dose modifications associated with toxicities. Please refer to the current idelalisib IB for information related to toxicity management.

7.6. Special Situations Reports

7.6.1. Definitions of Special Situations

Special situation reports include all reports of medication error, abuse, misuse, overdose, reports of adverse events associated with product complaints, and pregnancy reports regardless of an associated AE.

Medication error is any unintentional error in the prescribing, dispensing, or administration of a medicinal product while in the control of the health care provider, subject, or consumer.

Abuse is defined as persistent or sporadic intentional excessive use of a medicinal product by a subject.

Misuse is defined as any intentional and inappropriate use of a medicinal product that is not in accordance with the protocol instructions or the local prescribing information.

An overdose is defined as an accidental or intentional administration of a quantity of a medicinal product given per administration or cumulatively which is above the maximum recommended dose as per protocol or in the product labelling (as it applies to the daily dose of the subject in question). In cases of a discrepancy in drug accountability, overdose will be established only when it is clear that the subject has taken the excess dose(s). Overdose cannot be established when the subject cannot account for the discrepancy except in cases in which the investigator has reason to suspect that the subject has taken the additional dose(s).

Product complaint is defined as complaints arising from potential deviations in the manufacture, packaging, or distribution of the medicinal product.

7.6.2. Instructions for Reporting Special Situations

7.6.2.1. Instructions for Reporting Pregnancies

The investigator should report pregnancies in female study subjects that are identified after initiation of study medication and throughout the study to the Gilead DSPH using the pregnancy report form within 24 hours of becoming aware of the pregnancy.

The pregnancy itself is not considered an AE nor is an induced elective abortion to terminate a pregnancy without medical reasons.

Any premature termination of pregnancy (eg, a spontaneous abortion, an induced therapeutic abortion due to complications or other medical reasons) must be reported within 24 hours as an SAE. The underlying medical reason for this procedure should be recorded as the AE term.

A spontaneous abortion is always considered to be an SAE and will be reported as described in Sections 7.1.1 and 7.1.2. Furthermore, any SAE occurring as an adverse pregnancy outcome post study must be reported to Gilead DSPH.

The subject should receive appropriate monitoring and care until the conclusion of the pregnancy. The outcome should be reported to Gilead DSPH using the pregnancy outcome report form. If the end of the pregnancy occurs after the study has been completed, the outcome should be reported directly to Gilead DSPH. Gilead DSPH contact information is as follows:
Email: Safety_FC@gilead.com and Fax: +1 (650) 522-5477.

Pregnancies of female partners of male study subjects exposed to idelalisib must also be reported and relevant information should be submitted to Gilead DSPH using the pregnancy and pregnancy outcome forms within 24 hours. Monitoring of the subject should continue until the conclusion of the pregnancy. If the end of the pregnancy occurs after the study has been completed, the outcome should be reported directly to Gilead DSPH, fax number +1 650 522-5477 or email Safety_FC@gilead.com.

Refer to [Appendix 2](#) for Pregnancy Precautions, Definition for Female of Childbearing Potential, and Contraceptive Requirements.

7.6.2.2. Reporting Other Special Situations

All other special situation reports (excluding pregnancy) must be reported on the special situations report form and forwarded to Gilead DSPH within 24 hours of the investigator becoming aware of the situation. These reports must consist of situations that involve idelalisib, but do not apply to concomitant medications. Except for situations that result in AEs, special situations involving concomitant medication will not be reported. Any inappropriate use of concomitant medications prohibited by this protocol should not be reported as “misuse,” but may be more appropriately documented as a protocol deviation.

Refer to the CRF/eCRF completion guidelines for full instructions on the mechanism of special situations reporting.

All clinical sequelae in relation to these special situation reports will be reported as AEs or SAEs at the same time using the AE CRF/eCRF and/or the SAE report form. Details of the symptoms and signs, clinical management, and outcome will be reported, when available.

8. STATISTICAL CONSIDERATIONS

8.1. Analysis Objectives

As noted in Section 2, the primary objective is to provide idelalisib to subjects receiving GS-9820 in Study GS-US-315-0102 at the time of study closure who have had objective evidence of clinical benefit defined as at least stable disease on imaging assessed by the IRC and no toxicities prior to enrollment in this study that would preclude initiating therapy with idelalisib.

8.2. Safety Endpoints

Safety will be assessed with endpoints including incidence of \geq Grade 3 AEs, SAEs, and deaths.

8.3. Analysis Sets

Both safety and efficacy will be assessed using data collected from subjects who received at least 1 dose of idelalisib.

8.4. Analysis Methods

All the analyses will be limited to descriptive summaries and listings. Categorical variables will be summarized with the number and percentage of subjects in each category. Continuous variables will be summarized by presenting n, mean, standard deviation, median, Q1, Q3, minimum and maximum.

8.5. Adverse Events

Clinical and laboratory adverse events will be coded using the Medical Dictionary for Regulatory Activities (MedDRA). System Organ Class (SOC), High-Level Group Term (HLGT), High-Level Term (HLT), Preferred Term (PT), and Lower-Level Term (LLT) will be attached to the clinical database.

9. RESPONSIBILITIES

9.1. Investigator Responsibilities

9.1.1. Good Clinical Practice

The investigator will ensure that this study is conducted in accordance with the principles of the Declaration of Helsinki (as amended in Edinburgh, Tokyo, Venice, Hong Kong, and South Africa), International Conference on Harmonisation (ICH) guidelines, or with the laws and regulations of the country in which the research is conducted, whichever affords the greater protection to the study subject. These standards are consistent with the European Union Clinical Trials Directive 2001/20/EC and Good Clinical Practice Directive 2005/28/EC.

The investigator will ensure adherence to the basic principles of Good Clinical Practice, as outlined in 21 CFR 312, subpart D, “Responsibilities of Sponsors and Investigators,” 21 CFR, part 50, 1998, and 21 CFR, part 56, 1998.

The investigator and all applicable sub-investigators will comply with 21 CFR, Part 54, 1998, providing documentation of their financial interest or arrangements with Gilead, or proprietary interests in the investigational drug under study. This documentation must be provided prior to the investigator’s (and any sub-investigator’s) participation in the study. The investigator and sub-investigator agree to notify Gilead of any change in reportable interests during the study and for 1 year following completion of the study. Study completion is defined as the date when the last subject completes the protocol-defined activities.

9.1.2. Independent Ethics Committee (IEC) Review and Approval

The investigator (or sponsor as appropriate according to local regulations) will submit this protocol, informed consent form, and any accompanying material to be provided to the subject (such as advertisements, subject information sheets, or descriptions of the study used to obtain informed consent) to an IEC. The investigator will not begin any study subject activities until approval from the IEC has been documented and provided as a letter to the investigator.

Before implementation, the investigator will submit to and receive documented approval from the IEC any modifications made to the protocol or any accompanying material to be provided to the subject after initial IEC approval, with the exception of those necessary to reduce immediate risk to study subjects.

9.1.3. Informed Consent

The investigator is responsible for obtaining written informed consent from each individual participating in this study after adequate explanation of the aims, methods, objectives, and potential hazards of the study and before undertaking any study-related procedures. The investigator must use the most current IEC-approved consent form for documenting written informed consent. Each informed consent (or assent as applicable) will be appropriately signed

and dated by the subject or the subject's legally authorized representative and the person conducting the consent discussion, and also by an impartial witness if required by IEC or local requirements.

9.1.4. Confidentiality

The investigator must assure that subjects' anonymity will be strictly maintained and that their identities are protected from unauthorized parties. Only subject initials, date of birth, another unique identifier (as allowed by local law) and an identification code will be recorded on any form submitted to the Sponsor. NOTE: The investigator must keep a screening log showing codes, names, and addresses for all subjects screened and for all subjects enrolled in the trial. Subject data will be processed in accordance with all applicable regulations.

The investigator agrees that all information received from Gilead, including but not limited to the investigator brochure, this protocol, CRF/eCRF, idelalisib, and any other study information, remain the sole and exclusive property of Gilead during the conduct of the study and thereafter. This information is not to be disclosed to any third party (except employees or agents directly involved in the conduct of the study or as required by law) without prior written consent from Gilead. The investigator further agrees to take all reasonable precautions to prevent the disclosure by any employee or agent of the study site to any third party or otherwise into the public domain.

9.1.5. Study Files and Retention of Records

The investigator must maintain adequate and accurate records to enable the conduct of the study to be fully documented and the study data to be subsequently verified. These documents should be classified into at least the following two categories: (1) investigator's study file, and (2) subject clinical source documents.

The investigator's study file will contain the protocol/amendments, CRF and query forms, IEC and governmental approval with correspondence, informed consent, drug records, staff curriculum vitae and authorization forms, and other appropriate documents and correspondence.

The required source data should include sequential notes containing at least the following information for each subject:

- Subject identification (name, date of birth, gender);
- Birth dates will be collected as per local regulatory requirements, as needed
- Documentation that subject meets eligibility criteria, ie, history, physical examination, and confirmation of diagnosis (to support inclusion and exclusion criteria);
- Documentation of the reason(s) a consented subject is not enrolled
- Participation in study (including study number);

- Study discussed and date of informed consent;
- Dates of all visits;
- Documentation that protocol specific procedures were performed;
- Results of efficacy parameters, as required by the protocol;
- Start and end date (including dose regimen) of idelalisib, including dates of dispensing and return;
- Record of all adverse events and other safety parameters (start and end date, and including causality and severity);
- Concomitant medication (including start and end date, dose if relevant; dose changes);
- Date of study completion and reason for early discontinuation, if it occurs.

All clinical study documents must be retained by the investigator until at least 2 years or according to local laws, whichever is longer, after the last approval of a marketing application in an ICH region (ie, United States, Europe, or Japan) and until there are no pending or planned marketing applications in an ICH region; or, if no application is filed or if the application is not approved for such indication, until 2 years after the investigation is discontinued and regulatory authorities have been notified. Investigators may be required to retain documents longer if specified by regulatory requirements, by local regulations, or by an agreement with Gilead. The investigator must notify Gilead before destroying any clinical study records.

Should the investigator wish to assign the study records to another party or move them to another location, Gilead must be notified in advance.

If the investigator cannot provide for this archiving requirement at the study site for any or all of the documents, special arrangements must be made between the investigator and Gilead to store these records securely away from the site so that they can be returned sealed to the investigator in case of an inspection. When source documents are required for the continued care of the subject, appropriate copies should be made for storage away from the site.

9.1.6. Case Report Forms

For each subject consented, an eCRF will be completed by an authorized study staff member whose training for this function is documented according to study procedures. eCRF should be completed on the day of the subject visit to enable the sponsor to perform central monitoring of safety data. The Eligibility Criteria eCRF should be completed only after all data related to eligibility have been received. Subsequent to data entry, a study monitor will perform source data verification within the EDC system. Original entries as well as any changes to data fields will be stored in the audit trail of the system. Prior to database lock (or any interim time points as described in the clinical data management plan), the investigator will use his/her log in credentials to confirm that the forms have been reviewed, and that the entries accurately reflect the information in the source documents. The eCRF capture the data required per the protocol

schedule of events and procedures. System-generated or manual queries will be issued to the investigative site staff as data discrepancies are identified by the monitor or internal Gilead staff, who routinely review the data for completeness, correctness, and consistency. The site coordinator is responsible for responding to the queries in a timely manner, within the system, either by confirming the data as correct or updating the original entry, and providing the reason for the update (eg data entry error). At the conclusion of the trial, Gilead will provide the site with a read-only archive copy of the data entered by that site. This archive must be stored in accordance with the records retention requirements outlined in Section 9.1.5.

9.1.7. Drug Accountability and Return

Gilead recommends that used and unused idelalisib supplies be returned to the shipping facility from which it came for eventual destruction. The study monitor will provide instructions for return. If return is not possible, the study monitor will evaluate each study center's disposal procedures and provide appropriate instruction for destruction of unused idelalisib supplies. If the site has an appropriate standard operating procedure (SOP) for drug destruction as determined by Gilead QA, the site may destroy used (empty or partially empty) and unused idelalisib supplies in accordance with that site's approved SOP. A copy of the site's approved SOP will be obtained for central files.

If idelalisib is destroyed on site, the investigator must maintain accurate records for all idelalisib destroyed. Records must show the identification and quantity of each unit destroyed, the method of destruction, and the person who disposed of the idelalisib. Upon study completion, copies of the idelalisib accountability records must be filed at the site. Another copy will be returned to Gilead.

The study monitor will review idelalisib supplies and associated records at periodic intervals.

9.1.8. Inspections

The investigator will make available all source documents and other records for this trial to Gilead's appointed study monitors, to appropriately qualified personnel from Gilead Sciences or its representatives, to IECs, or to regulatory authority or health authority inspectors.

9.1.9. Protocol Compliance

The investigator is responsible for ensuring the study is conducted in accordance with the procedures and evaluations described in this protocol.

9.2. Sponsor Responsibilities

9.2.1. Protocol Modifications

Protocol modifications, except those intended to reduce immediate risk to study subjects, may be made only by Gilead. The investigator must submit all protocol modifications to the IEC in accordance with local requirements and receive documented IEC approval before modifications can be implemented.

9.2.2. Communications with Regulatory Authorities

Gilead Sciences, working either directly or through designees, will assume responsibility for regulatory interactions with relevant regulatory authorities. Gilead Sciences will maintain an IND for idelalisib in support of the study in the United States and will maintain similar regulatory applications with other regulatory authorities, as required for conduct of the study. In fulfilling this responsibility, Gilead Sciences (or a designee) will collect, assemble, and communicate all required regulatory documents (eg, Form FDA 1572, investigator financial disclosure forms, protocol and protocol amendments, investigator brochures, informed consent documents, annual reports) as required by regulation. Gilead Sciences (or a designee) will also assume responsibility for adverse event reporting to regulatory authorities as described in Section 7.5.

9.2.3. Study Report and Publications

A clinical study report (CSR) will be prepared and provided to the regulatory agency(ies). Gilead will ensure that the report meets the standards set out in the ICH Guideline for Structure and Content of Clinical Study Reports (ICH E3). Note that an abbreviated report may be prepared in certain cases.

Investigators in this study may communicate, orally present, or publish in scientific journals or other scholarly media only after the following conditions have been met:

The results of the study in their entirety have been publicly disclosed by or with the consent of Gilead in an abstract, manuscript, or presentation form or the study has been completed at all study sites for at least 2 years.

The investigator will submit to Gilead any proposed publication or presentation along with the respective scientific journal or presentation forum at least 30 days before submission of the publication or presentation.

No such communication, presentation, or publication will include Gilead's confidential information (see Section 9.1.4).

The investigator will comply with Gilead's request to delete references to its confidential information (other than the study results) in any paper or presentation and agrees to withhold publication or presentation for an additional 60 days in order to obtain patent protection if deemed necessary.

9.3. Joint Investigator/Sponsor Responsibilities

9.3.1. Payment Reporting

Investigators and their study staff may be asked to provide services performed under this protocol, eg attendance at Investigator's Meetings. If required under the applicable statutory and regulatory requirements, Gilead will capture and disclose to Federal and State agencies any expenses paid or reimbursed for such services, including any clinical trial payments, meal, travel expenses or reimbursements, consulting fees, and any other transfer of value.

9.3.2. Access to Information for Monitoring

In accordance with regulations and guidelines, the study monitor must have direct access to the investigator's source documentation in order to verify the accuracy of the data recorded in the CRF/eCRF.

The monitor is responsible for routine review of the CRF/eCRF at regular intervals throughout the study to verify adherence to the protocol and the completeness, consistency, and accuracy of the data being entered on them. The monitor should have access to any subject records needed to verify the entries on the CRF/eCRF. The investigator agrees to cooperate with the monitor to ensure that any problems detected through any type of monitoring (central, on site) are resolved.

9.3.3. Access to Information for Auditing or Inspections

Representatives of regulatory authorities or of Gilead may conduct inspections or audits of the clinical study. If the investigator is notified of an inspection by a regulatory authority the investigator agrees to notify the Gilead medical monitor immediately. The investigator agrees to provide to representatives of a regulatory agency or Gilead access to records, facilities, and personnel for the effective conduct of any inspection or audit.

9.3.4. Study Discontinuation

Both the sponsor and the investigator reserve the right to terminate the study at any time. Should this be necessary, both parties will arrange discontinuation procedures and notify the appropriate regulatory authority(ies) and IECs. In terminating the study, Gilead and the investigator will assure that adequate consideration is given to the protection of the subjects' interests.

10. REFERENCES

- Coutre S, Barrientos JC, Brown JR, De Vos S, Furman RR, Keating MJ, et al. Safety of idelalisib in B-cell malignancies: Integrated analysis of eight clinical trials [Presentation EHA-3983]. 20th Congress of European Hematology Association (EHA); 2015; Vienna, Austria.
- Coutre S, Byrd J, Furman R, Brown J, et al. Phase I study of CAL-101, an isoform-selective inhibitor of phosphatidylinositol 3-kinase P110d, in patients with previously treated chronic lymphocytic leukemia [Abstract]. 47th Annual Meeting of the American Society of Clinical Oncology (ASCO); 2011 June 3; Chicago, IL.
- Di Bella N, Taetle R, Kolibaba K, Boyd T, Raju R, Barrera D, et al. Results of a phase 2 study of bortezomib in patients with relapsed or refractory indolent lymphoma. *Blood* 2010;115 (3):475-80.
- Diehl V, Thomas RK, Re D. Part II: Hodgkin's lymphoma--diagnosis and treatment. *Lancet Oncol* 2004;5 (1):19-26.
- Dighiero G, Hamblin TJ. Chronic lymphocytic leukaemia. *Lancet* 2008;371 (9617):1017-29.
- Eichhorst B, Hallek M, Dreyling M. Chronic lymphocytic leukaemia: ESMO Clinical Practice Guidelines for diagnosis, treatment and follow-up. *Ann Oncol* 2010;21 Suppl 5:v162-4.
- Friedberg JW. New strategies in diffuse large B-cell lymphoma: translating findings from gene expression analyses into clinical practice. *Clin Cancer Res* 2011;17 (19):6112-7.
- Gilead Sciences Inc. ZYDELIG® (idelalisib) tablets, for oral use. U.S. Prescribing Information. Foster City, CA. July 2014:
- Gilead Sciences Limited. Zedelig (idelalisib) 150mg. Summary of Product Characteristics. Cambridge, United Kingdom. Revised 21 July. 2015:
- Goy A, Bernstein SH, Kahl BS, Djulbegovic B, Robertson MJ, de Vos S, et al. Bortezomib in patients with relapsed or refractory mantle cell lymphoma: updated time-to-event analyses of the multicenter phase 2 PINNACLE study. *Ann Oncol* 2009;20 (3):520-5.
- Gribben JG, O'Brien S. Update on therapy of chronic lymphocytic leukemia. *J Clin Oncol* 2011;29 (5):544-50.

- Hallek M, Fischer K, Fingerle-Rowson G, Fink AM, Busch R, Mayer J, et al. Addition of rituximab to fludarabine and cyclophosphamide in patients with chronic lymphocytic leukaemia: a randomised, open-label, phase 3 trial. *Lancet* 2010;376 (9747):1164-74.
- Hess G, Herbrecht R, Romaguera J, Verhoef G, Crump M, Gisselbrecht C, et al. Phase III study to evaluate temsirolimus compared with investigator's choice therapy for the treatment of relapsed or refractory mantle cell lymphoma. *J Clin Oncol* 2009;27 (23):3822-9.
- Hoppe RT, Advani RH, Ambinder RF, Bierman PJ, Bloomfield CD, Blum K, et al. Hodgkin disease/lymphoma. *J Natl Compr Canc Netw* 2008;6 (6):594-622.
- Jost L. Hodgkin's disease: ESMO clinical recommendations for diagnosis, treatment and follow-up. *Ann Oncol* 2007;18 (Suppl 2):ii53-4.
- Kahl B, Byrd J, Flinn I, Wagner-Johnston N, Spurgeon S, al E. Significant Clinical Activity Of Cal-101, An Isoform-Selective Inhibitor Of Phosphatidylinositol 3 Kinase P110D, In Patients With Relapsed Or Refractory Indolent And Mantle Cell Lymphoma [Abstract 350] 11th Triennial International Conference on malignant Lymphoma (Icml). Lugano, Switserland: 2011:
- Keating MJ, Flinn I, Jain V, Binet JL, Hillmen P, Byrd J, et al. Therapeutic role of alemtuzumab (Campath-1H) in patients who have failed fludarabine: results of a large international study. *Blood* 2002;99 (10):3554-61.
- Kuruvilla J. Standard therapy of advanced Hodgkin lymphoma. *Hematology / the Education Program of the American Society of Hematology. American Society of Hematology* 2009:497-506.
- Lenz G, Dreyling M, Hoster E, Wormann B, Duhrsen U, Metzner B, et al. Immunochemotherapy with rituximab and cyclophosphamide, doxorubicin, vincristine, and prednisone significantly improves response and time to treatment failure, but not long-term outcome in patients with previously untreated mantle cell lymphoma: results of a prospective randomized trial of the German Low Grade Lymphoma Study Group (GLSG). *J Clin Oncol* 2005;23 (9):1984-92.
- Moskowitz AJ, Perales MA, Kewalramani T, Yahalom J, Castro-Malaspina H, Zhang Z, et al. Outcomes for patients who fail high dose chemoradiotherapy and autologous stem cell rescue for relapsed and primary refractory Hodgkin lymphoma. *Br J Haematol* 2009;146 (2):158-63.
- Okkenhaug K, Vanhaesebroeck B. PI3K-signalling in B- and T-cells: insights from gene-targeted mice. *Biochemical Society transactions* 2003;31 (Pt 1):270-4.

- Raanani P, Gafter-Gvili A, Paul M, Ben-Bassat I, Leibovici L, Shpilberg O. Immunoglobulin prophylaxis in chronic lymphocytic leukemia and multiple myeloma: systematic review and meta-analysis. *Leuk Lymphoma* 2009;50 (5):764-72.
- Recher C, Coiffier B, Haioun C, Molina TJ, Ferme C, Casasnovas O, et al. Intensified chemotherapy with ACVBP plus rituximab versus standard CHOP plus rituximab for the treatment of diffuse large B-cell lymphoma (LNH03-2B): an open-label randomised phase 3 trial. *Lancet* 2011;378 (9806):1858-67.
- Salles GA. Clinical features, prognosis and treatment of follicular lymphoma. *Hematology / the Education Program of the American Society of Hematology. American Society of Hematology* 2007:216-25.
- Santoro A, Bonadonna G, Valagussa P, Zucali R, Viviani S, Villani F, et al. Long-term results of combined chemotherapy-radiotherapy approach in Hodgkin's disease: superiority of ABVD plus radiotherapy versus MOPP plus radiotherapy. *J Clin Oncol* 1987;5 (1):27-37.
- Schulz H, Bohlius JF, Trelle S, Skoetz N, Reiser M, Kober T, et al. Immunochemotherapy with rituximab and overall survival in patients with indolent or mantle cell lymphoma: a systematic review and meta-analysis. *J Natl Cancer Inst* 2007;99 (9):706-14.
- Surveillance Epidemiology and End Results (SEER) Program. SEER Stat Fact Sheets: Chronic Lymphocytic Leukemia. Available at: <http://seer.cancer.gov/statfacts/html/clyl.html>. Accessed 12 May 2011.
- Vanhaesebroeck B, Ali K, Bilancio A, Geering B, Foukas LC. Signalling by PI3K isoforms: insights from gene-targeted mice. *Trends Biochem Sci* 2005;30 (4):194-204.
- Wierda WG, Kipps TJ, Mayer J, Stilgenbauer S, Williams CD, Hellmann A, et al. Ofatumumab as single-agent CD20 immunotherapy in fludarabine-refractory chronic lymphocytic leukemia. *J Clin Oncol* 2010;28 (10):1749-55.
- Williams ME, Dreyling M, Winter J, Muneer S, Leonard JP. Management of mantle cell lymphoma: key challenges and next steps. *Clinical lymphoma, myeloma & leukemia* 2010;10 (5):336-46.
- Zelenetz AD, Abramson JS, Advani RH, Andreadis CB, Bartlett N, Bellam N, et al. Non-Hodgkin's lymphomas. *J Natl Compr Canc Netw* 2011;9 (5):484-560.

11. APPENDICES

- Appendix 1. Investigator Signature Page
- Appendix 2. Pregnancy Precautions, Definition for Female of Childbearing Potential, and Contraceptive Requirements

Appendix 1. Investigator Signature Page

**GILEAD SCIENCES, INC.
199 EAST BLAINE STREET
SEATTLE, WA 98102**

STUDY ACKNOWLEDGEMENT

An Open Label, Roll Over Study to Provide Idelalisib to Subjects Previously Treated with the
Investigational PI3K δ Inhibitor, GS-9820

Amendment 2 26 August 2016

This protocol has been approved by Gilead Sciences, Inc. The following signature documents
this approval.

Mario Marcondes, MD

Gilead Medical Monitor

PPD



08-29-2016

Date

INVESTIGATOR STATEMENT

I have read the protocol, including all appendices, and I agree that it contains all necessary
details for me and my staff to conduct this study as described. I will conduct this study as
outlined herein and will make a reasonable effort to complete the study within the time
designated.

I will provide all study personnel under my supervision copies of the protocol and access to all
information provided by Gilead Sciences, Inc. I will discuss this material with them to ensure
that they are fully informed about the drugs and the study.

Principal Investigator Name (Printed)

Signature

Date

Site Number

Appendix 2. Pregnancy Precautions, Definition for Female of Childbearing Potential, and Contraceptive Requirements

1) Definitions

a) Definition of Childbearing Potential

For the purposes of this study, a female born subject is considered of childbearing potential following the initiation of puberty (Tanner stage 2) until becoming post-menopausal, unless permanently sterile or with medically documented ovarian failure.

Women are considered to be in a postmenopausal state when they are ≥ 54 years of age with cessation of previously occurring menses for ≥ 12 months without an alternative cause. In addition, women of any age with amenorrhea of ≥ 12 months may also be considered postmenopausal if their follicle stimulating hormone (FSH) level is in the postmenopausal range and they are not using hormonal contraception or hormonal replacement therapy.

Permanent sterilization includes hysterectomy, bilateral oophorectomy, or bilateral salpingectomy in a female subject of any age.

b) Definition of Male Fertility

For the purposes of this study, a male born subject is considered fertile after the initiation of puberty unless permanently sterile by bilateral orchidectomy or medical documentation.

2) Contraception Requirements for Female Subjects

a) Study Drug Effects on Pregnancy and Hormonal Contraception

Idelalisib has insufficient data to exclude the possibility of a clinically relevant interaction with hormonal contraception that results in reduced contraception efficacy. Therefore, contraceptive steroids are not recommended as a contraceptive method either solely or as a part of a contraceptive regimen. Data from clinical pharmacokinetic interaction studies of idelalisib have demonstrated no adverse effect on fertility or embryo-fetal development. However, there is no clinical data of idelalisib in pregnant women. Please refer to the latest version of the investigator's brochure for additional information.

b) Contraception Requirements for Female Subjects of Childbearing Potential

The inclusion of female subjects of childbearing potential requires using a highly effective contraceptive measure. They must also not rely on hormone-containing contraceptives as a form of birth control during the study. They must have a negative serum pregnancy test at Screening and a negative pregnancy test on the Baseline/Day 1 visit prior to randomization. At minimum, a pregnancy test will be performed at the end of relevant systemic exposure. In the event of a delayed menstrual period (over one month between menstruations), a pregnancy test must be performed to rule out pregnancy. This is even true for women of childbearing potential with infrequent or irregular periods. They must also agree to one of the following from Screening until 30 days after the end of relevant systemic exposure.

Complete abstinence from intercourse of reproductive potential. Abstinence is an acceptable method of contraception only when it is in line with the subject's preferred and usual lifestyle.

Or

Consistent and correct use of 1 of the following methods of birth control listed below.

- Intrauterine device (IUD) with a failure rate of <1% per year
- Tubal sterilization
- Ensure micro-insert system (provided confirmation of success 3 months after procedure)
- Vasectomy in the male partner (provided that the partner is the sole sexual partner and had confirmation of surgical success 3 months after procedure)
- Barrier methods (one female barrier and one male barrier must be used in combination)
 - Female barriers: Diaphragm with spermicide or Cervical cap with spermicide
 - Male barriers: Male condom (with or without spermicide)

Female subjects must also refrain from egg donation and in vitro fertilization during treatment and until at least 30 days after the end of relevant systemic exposure

3) Contraception Requirements for Male Subjects

Male subjects must also refrain from sperm donation during treatment and until at least 90 days after the end of relevant systemic exposure.

It is theoretically possible that a relevant systemic concentration may be achieved in a female partner from exposure of the male subject's seminal fluid. Therefore, male subjects with female partners of childbearing potential must use condoms during treatment until the end of relevant systemic exposure.

4) Unacceptable Birth Control Methods

Birth control methods that are unacceptable include periodic abstinence (eg, calendar, ovulation, symptothermal, post-ovulation methods), withdrawal (coitus interruptus), spermicides only, and lactational amenorrhea method (LAM). Female condom and male condom should not be used together.

5) Procedures to be Followed in the Event of Pregnancy

Subjects will be instructed to notify the investigator if they become pregnant at any time during the study, or if they become pregnant within 30 days of last idelalisib dose. Subjects who become pregnant or who suspect that they are pregnant during the study must report the information to the investigator and discontinue idelalisib immediately. Subjects whose partner has become pregnant or suspects she is pregnant during the study must report the information to the investigator. Instructions for reporting pregnancy, partner pregnancy, and pregnancy outcome are outlined in Section [7.6.2.1](#).